

**Apps  
Anywhere  
(SLC Apps)**



**St. Lawrence  
College**

---

This manual contains pertinent  
information about accessing SLC  
Apps on your home computer or  
other device

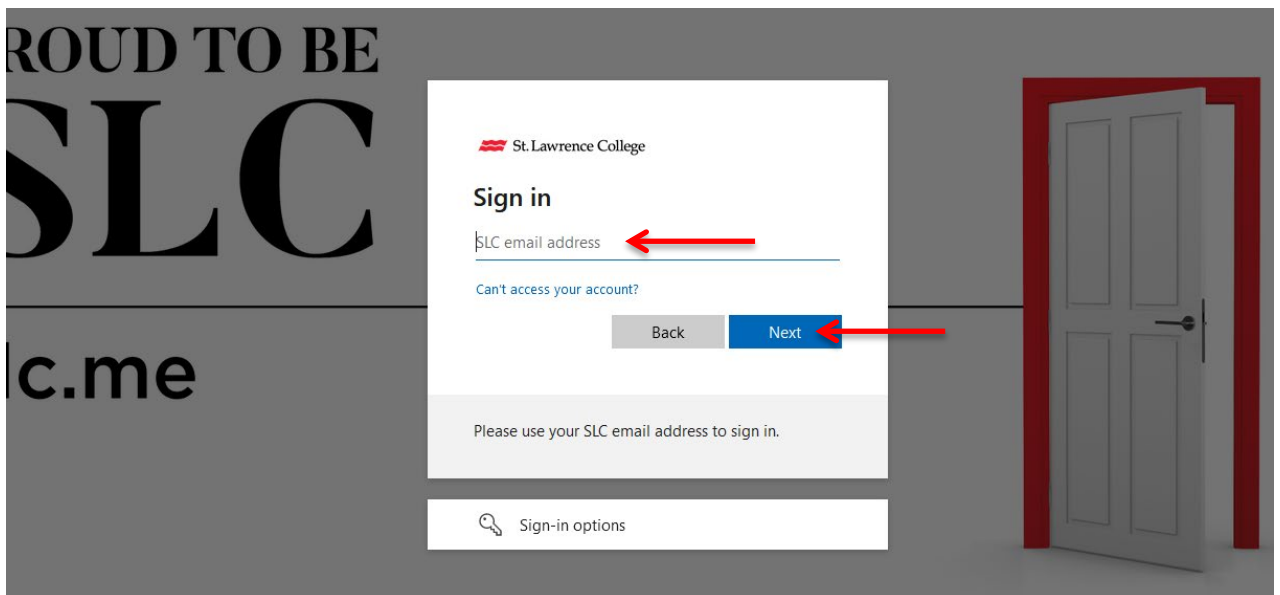
August 2024

## About

This document includes information on a service that provides remote access to applications that are normally only available on SLC computers and in labs. **Please note that this access is ONLY available on windows devices at this time.**

## How to Access

1. To access AppsAnywhere, you will need to log in to SLC.me
2. Go to <http://SLC.me>
3. You will be able to login with your SLC email address and click on 'Next'. Remember that your SLC email address ends with *@student.sl.on.ca*



4. You will then be prompted to enter your password and click the 'Sign-in' button.

## Enter password

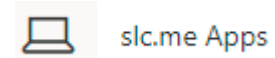
Password

[Forgot my password](#)

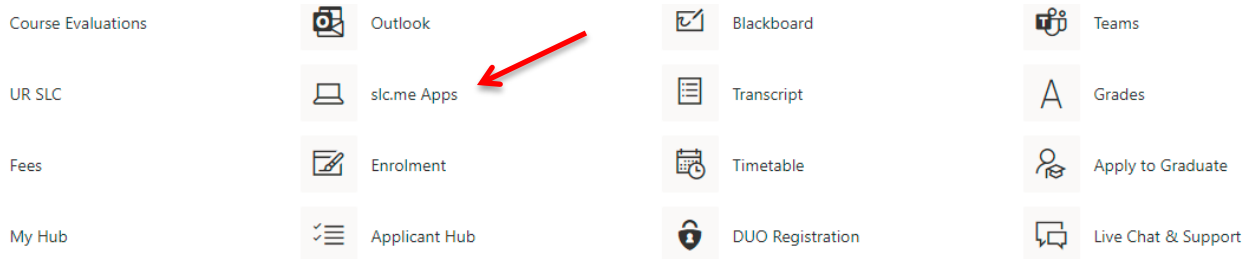
## AppsAnywhere

### Slc.me Apps Launch Instructions

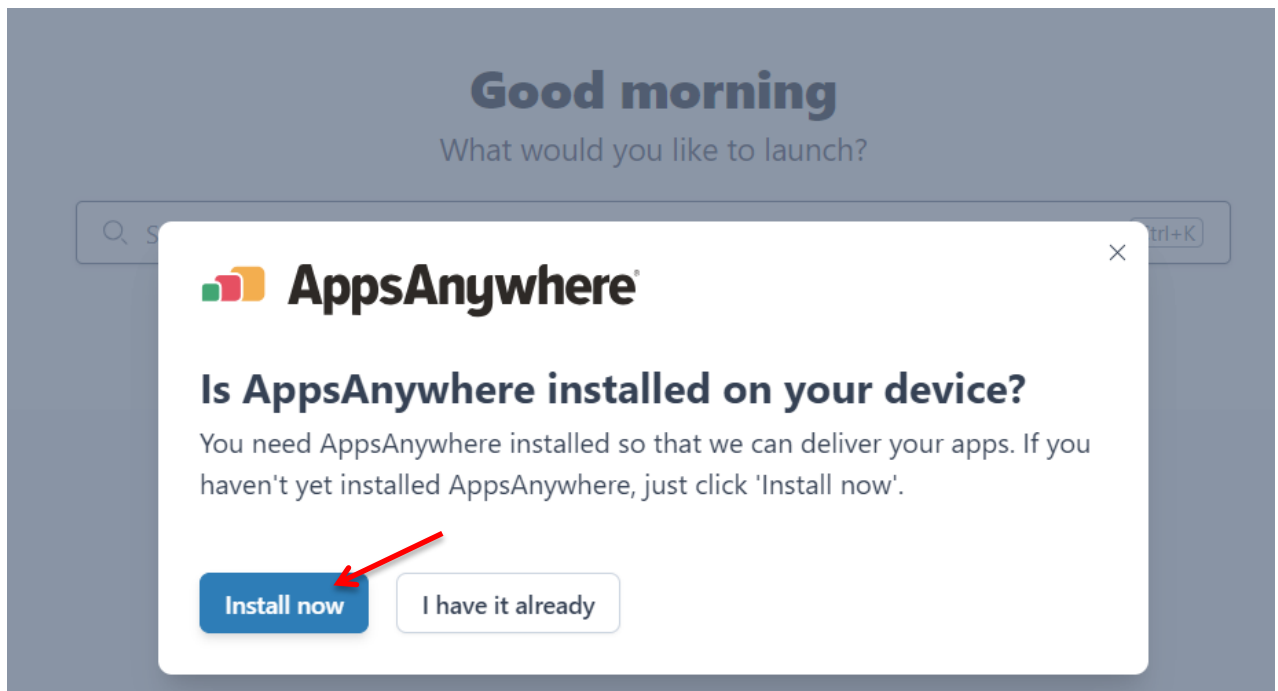
1. Login into SLC.me and click on the '**slc.me Apps**' button.



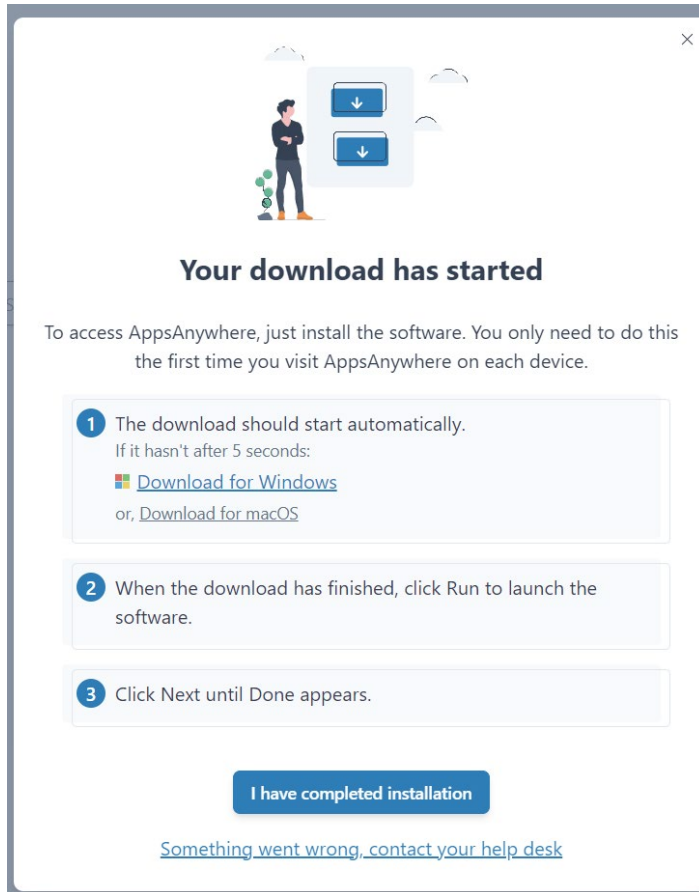
Google Chrome is the recommended browser.



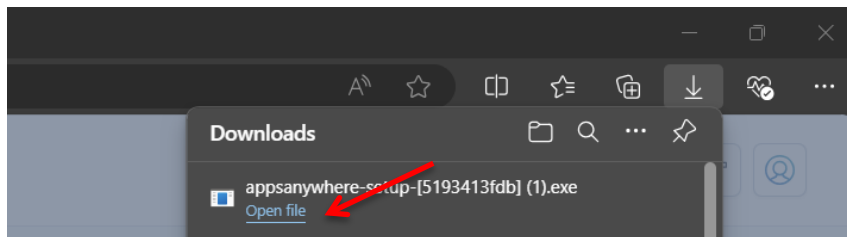
2. Install AppsAnywhere:



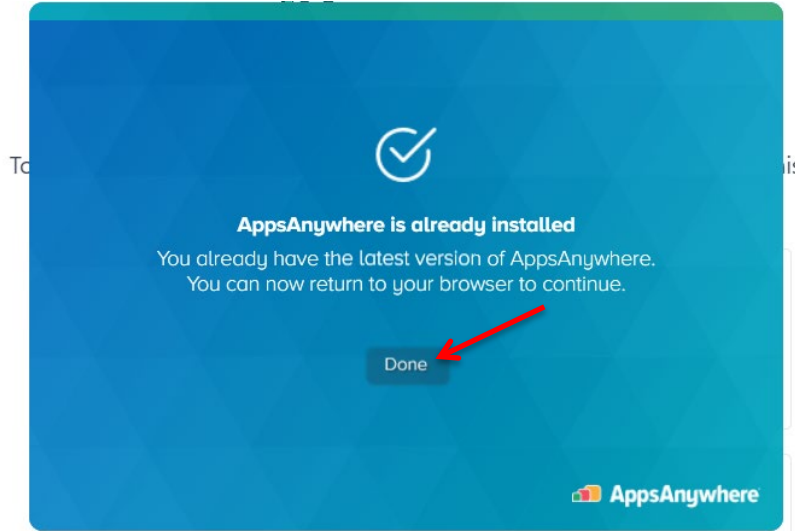
3. Download the Software:



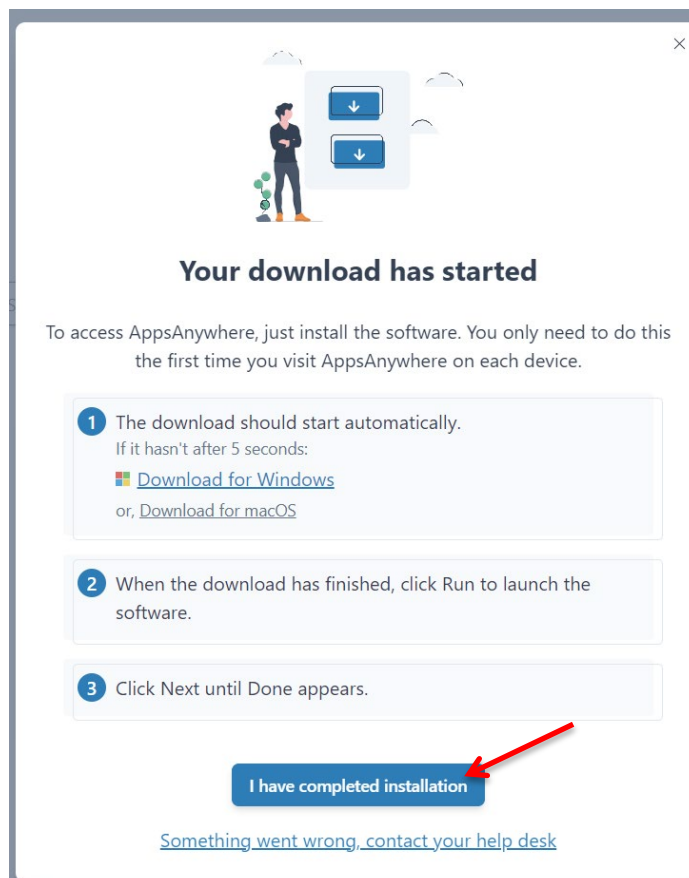
4. Open the Download File



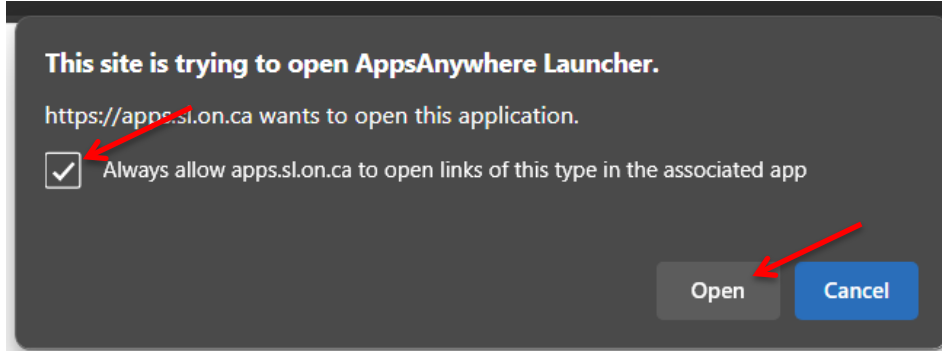
5. If you already have AppsAnywhere installed, you will see the following message. You can click on 'Done':



6. Then click on 'I have completed installation' on the original window:



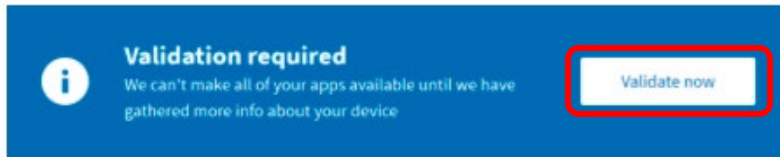
7. If you receive this prompt, click on the 'Always allow apps.sl.on.ca to open links of this type in the associated app'. Then click on 'Open'



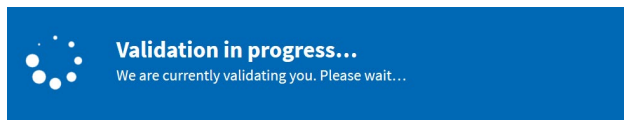
8. You may see this icon in the bottom right corner (which may take several minutes depending on internet speed):



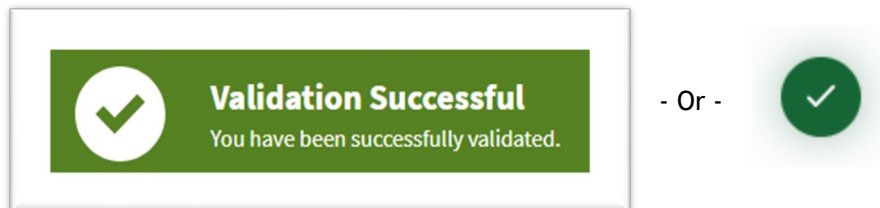
9. You will be asked to Validate your Device. Click on 'Validate now'.



10. You may see this banner (which may take several minutes depending on your internet speed):



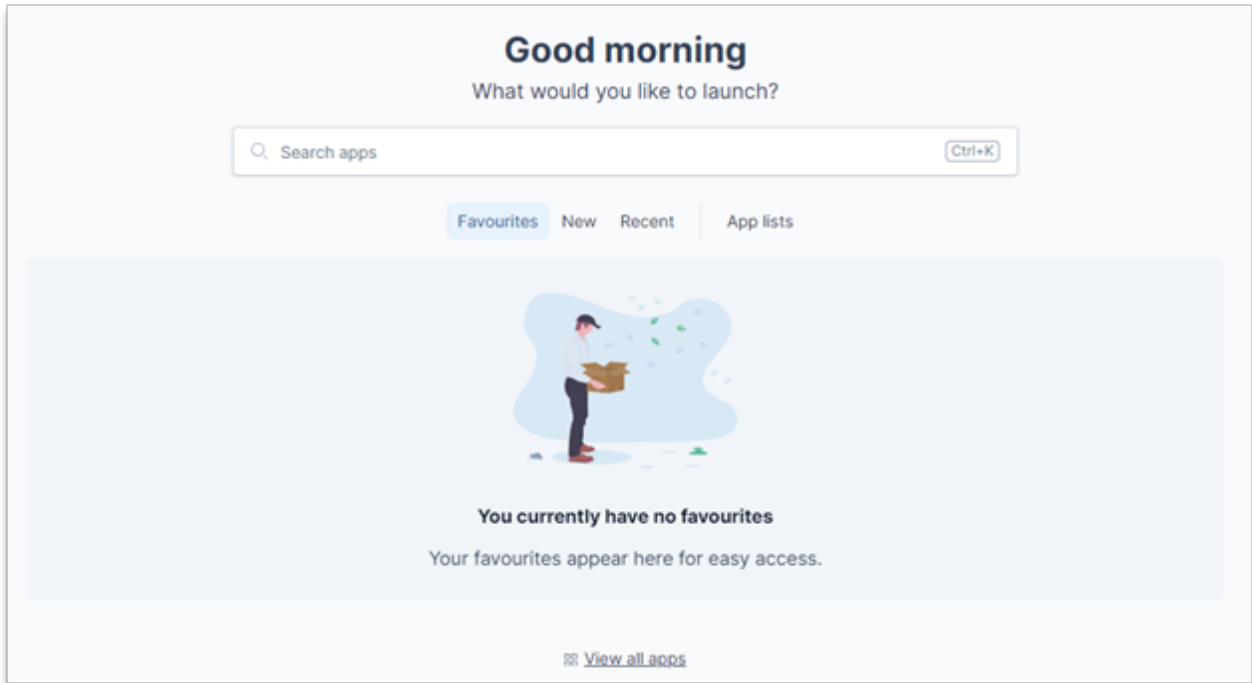
11. Followed by:



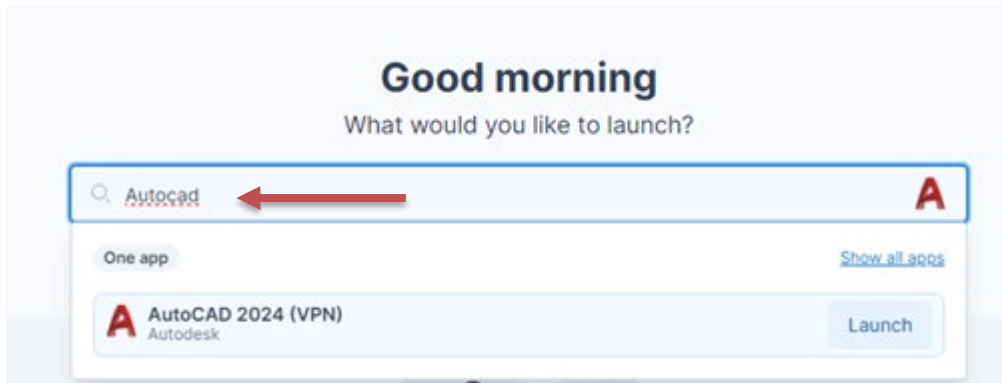
12. You will then be presented with the slc.me Apps screen.

**Some applications will require you to connect to the college [vpn.slc.me](https://vpn.slc.me) before they can be accessed. Instructions for this can be found near the end of this document.**

slc.me Apps Screen

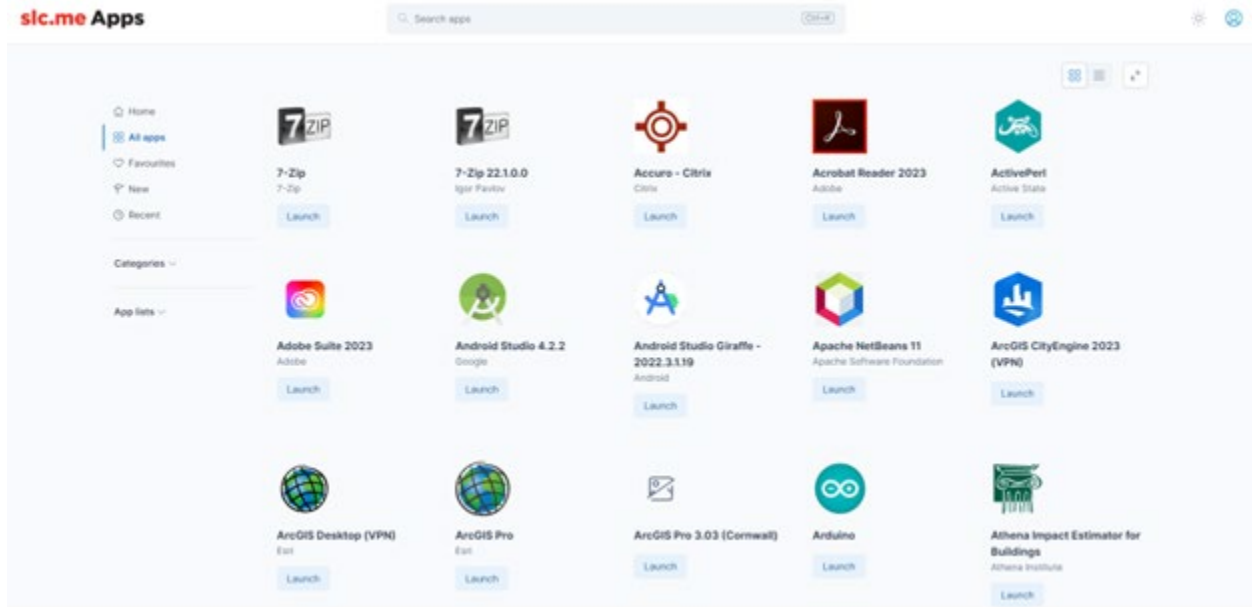


13. Click in the 'Search apps' field and enter the application you'd like to launch.





- Another option to launch your app, is to choose "View all apps", then scroll to your application, and choose launch.



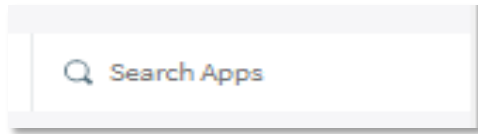
Please contact the IT Service Desk if you require more information at x1000 or [slc.me@sl.on.ca](mailto:slc.me@sl.on.ca)

---

## Connect to VPN

### How to connect to the [vpn.slc.me](https://vpn.slc.me)

*Note: This installation is ONLY required if launching specific applications through the [slc.me](https://vpn.slc.me) Apps. Type **VPN** in the Search bar to filter VPN applications*



Using **Google Chrome**, browse to <https://vpn.slc.me>

- Login with SLC credentials and DUO
- You should now be at the below page.
- Click on "Download 64 bit Global Protect Agent"



### GlobalProtect Portal

[Download Windows 32 bit GlobalProtect agent](#)

[Download Windows 64 bit GlobalProtect agent](#) ←

[Download Mac 32/64 bit GlobalProtect agent](#)

Windows 32 bit OS needs to download and install Windows 32 bit GlobalProtect agent.

Windows 64 bit OS needs to download and install Windows 64 bit GlobalProtect agent.

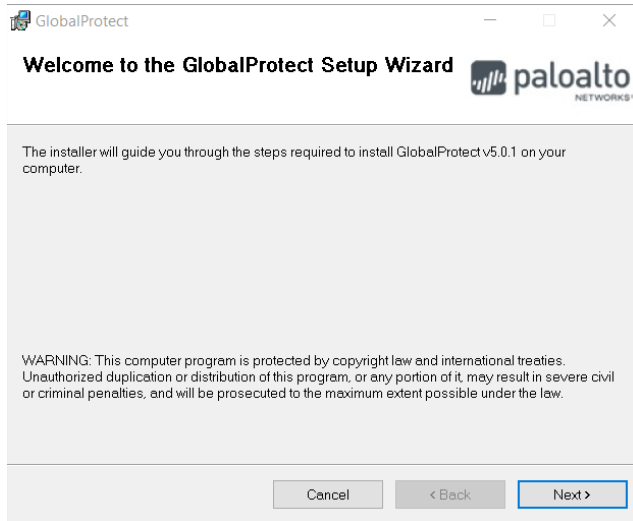
Mac OS needs to download and install Mac 32/64 bit GlobalProtect agent.

## AppsAnywhere

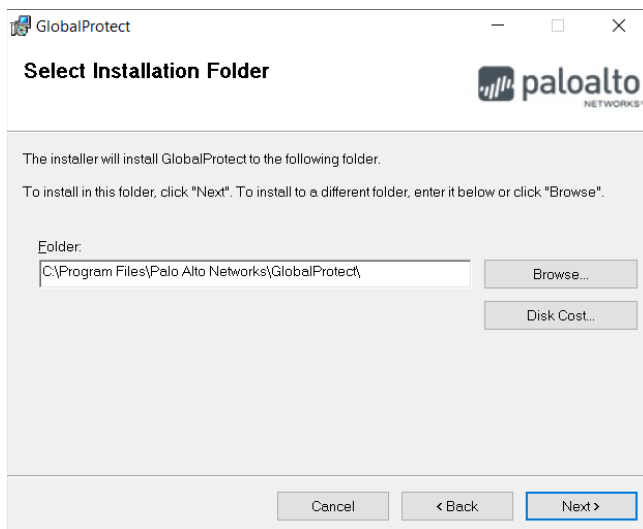
Download will begin, look for the following at the bottom of your browser window:



Click on this to begin installation. Follow instructions as prompted.

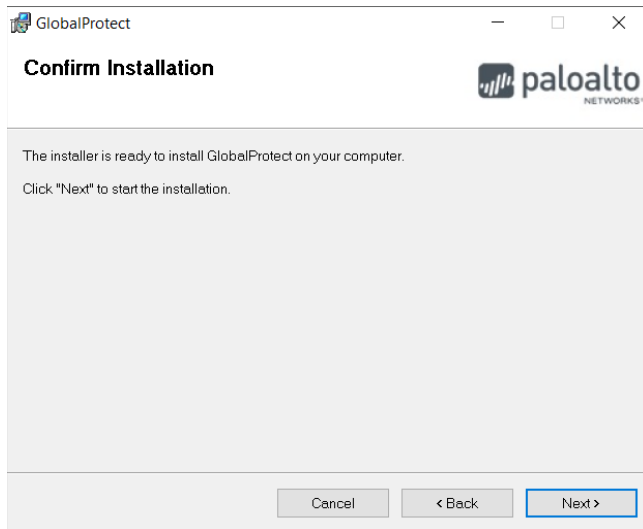


Click 'Next'

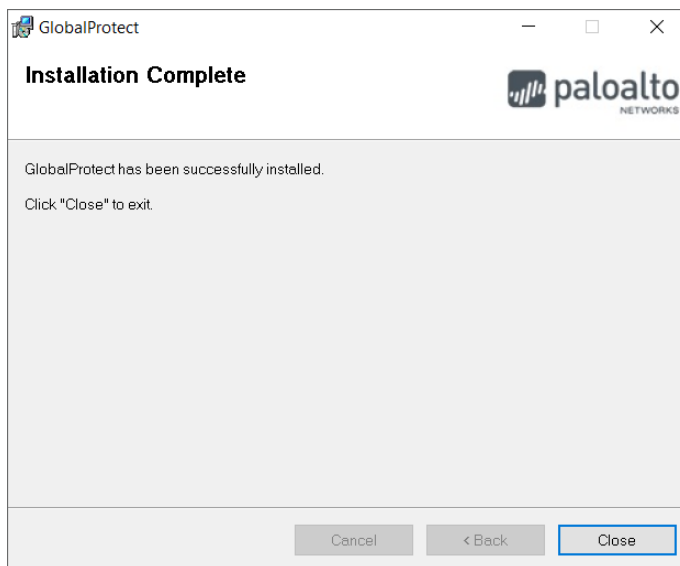


Click 'Next'

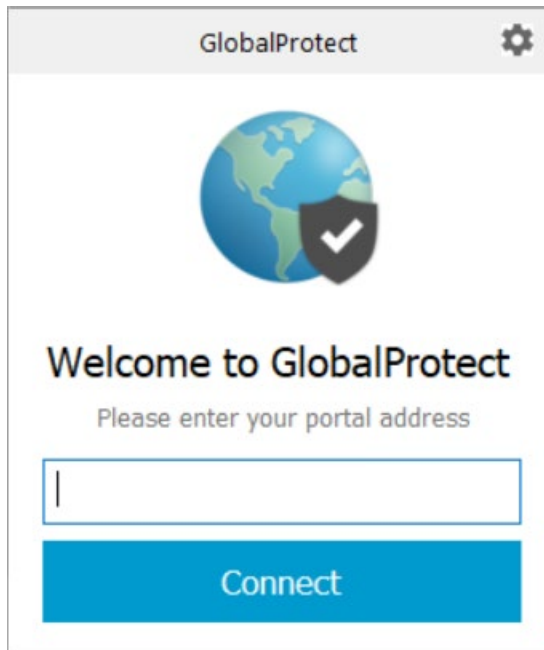
## AppsAnywhere



Click 'Next'



Click 'Close'



Enter the address: **vpn.slc.me** and click 'Connect'

Note: You may be prompted for your SLC credentials again if you have never used this service before.

***Congratulations!! You have successfully installed and connected to Global Protect and SLC's Virtual Private Network.***

## AppsAnywhere

---

### FAQs

#### Does AppsAnywhere work Offline?

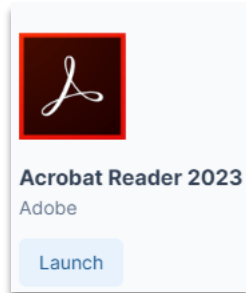
No. You must have an active internet connection to access AppsAnywhere and download software. However, once you have downloaded the software to your device, in most cases, you will be able to use the software offline. See the **More Info** link associated with an individual **software** title and take note of any restrictions or dependencies.

#### How is software delivered through AppsAnywhere?

It depends on the technical and/or licensing requirements of specific software. Software listed on AppsAnywhere can be delivered in a number of ways:

- redirected to a vendor's website for the software
- launched via locally installed software
- streamed via Cloudpaging\*

*\* Cloudpaging is an application virtualization service that allows software applications to be deployed on-demand, to computers around campus*



## **AppsAnywhere**

---

### **Why is some software missing from the AppsAnywhere Store?**

While many software applications are available for all SLC staff and students, some titles are only made available for specific groups and/or individuals.

For example, some software may be only licensed for use in a specific program and/or course. As such, only those students enrolled, and the faculty teaching those courses, will be able to see that application when AppsAnywhere is launched.

Sometimes a student may not see an application while other students in their class can. In this case, it is possible that the student is not properly enrolled yet in our system.

It is also possible that a faculty member may not see an application because they are not teaching that specific course that term.

The [IT Service Desk](#) can be contacted for more information and assistance.

### **Why is some software listed as unavailable to me?**

There are a few different reasons why software may be listed as unavailable when AppsAnywhere is launched. Each application is set up with different rules about how it can be accessed. Some examples are:

- Some titles are restricted by the user's hardware and/or operating systems (macOS/Windows). If you are running Windows, for example, software specific to macOS will be listed as unavailable.
- Licensing agreements can also impact the availability of some software. For example, some applications are not licensed for personal devices.
- When working offsite, some applications may require that you are connected to the SLC network using our VPN service. If an application requires you to be connected to the network, there will be a note indicating that VPN is required on the App Details tab. It is recommended that you connect to VPN before opening AppsAnywhere

If you have any have questions about application availability contact the [IT Service Desk](#) for support.

## AppsAnywhere

---

### Can I request software to be listed in the AppsAnywhere Store?

If there is software you would like to see made available to a class, faculty or employee group, contact the [IT Service Desk](#) and an IT staff member will work with you on your request.

### Are there restrictions on the software from the AppsAnywhere Store?

Access to some resources may be on a term-to-term basis and sometimes there is a limit to the number of devices you can run the software on simultaneously. The **more info** button associated with each title listed on AppsAnywhere will reveal any specific restrictions.

### AppsAnywhere is not validating, or the validation prompt is not showing in my browser - What should I do?

*If AppsAnywhere is not validating and/or the validation prompt does not appear in your browser window, try one or more of the following to resolve the issue:*

- *Whenever prompted, click "**launch application**" to allow validation on the device*
- *Clear your browser cache. If the problem persists:*
  - *try Private/Incognito mode (press 'ctrl/shft/N')*
  - *try using a different browser*
- *Disable antivirus software before visiting AppsAnywhere*
- *Make sure your device has the latest operating system updates*
- *Make sure the AppsAnywhere client is installed*
  - *if not, install it*
  - *if so, you can try reinstalling the app*

### Why is it taking a long time for an application to launch?

Generally, Cloudpaged applications open at a similar speed to locally installed software. However, the first time that an application is launched it can take some time for the software to install. Larger applications can also take longer to install.