

**VPN - Global
Protect
Installation
Instructions**



This manual contains pertinent information about installing Global Protect on your Corporate Laptop in order to connect to the College's network.

January 2023

Global Protect Installation Instructions

About

Global Protect is **the application used to connect to the Virtual Private Network (VPN) at St. Lawrence College**. A VPN provides an encrypted connection between your off-campus computer and the campus network. Being connected to Global Protect will allow you to access the Shared Files (SDrive folders) that you would normally be able to access from on-site.

Download GlobalProtect

1. Using Google Chrome, browse to <https://vpn.sl.on.ca>
2. Login with your full SLC email address and password.
3. You will be prompted to authenticate with DUO.
4. You should now see the window below. Click on 'Download Windows 64-bit GlobalProtect agent'



GlobalProtect Portal

[Download Windows 32 bit GlobalProtect agent](#)

[Download Windows 64 bit GlobalProtect agent](#)

(- PC)

[Download Mac 32/64 bit GlobalProtect agent](#)

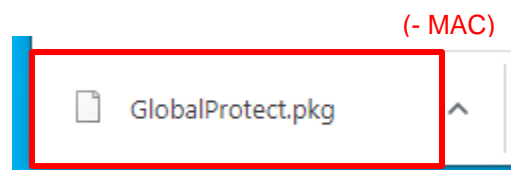
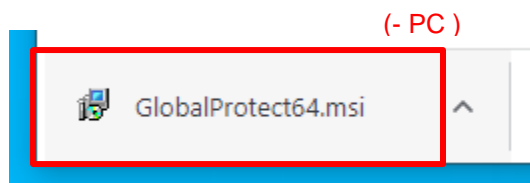
(- MAC)

Windows 32 bit OS needs to download and install Windows 32 bit GlobalProtect agent.

Windows 64 bit OS needs to download and install Windows 64 bit GlobalProtect agent.

Mac OS needs to download and install Mac 32/64 bit GlobalProtect agent.

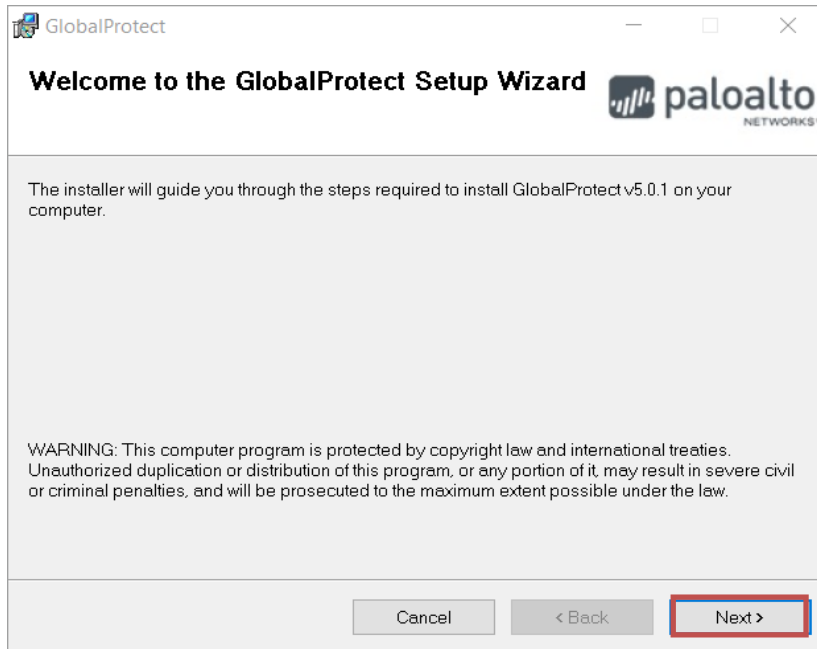
5. Download will begin, then look for the following at the bottom of your browser window:



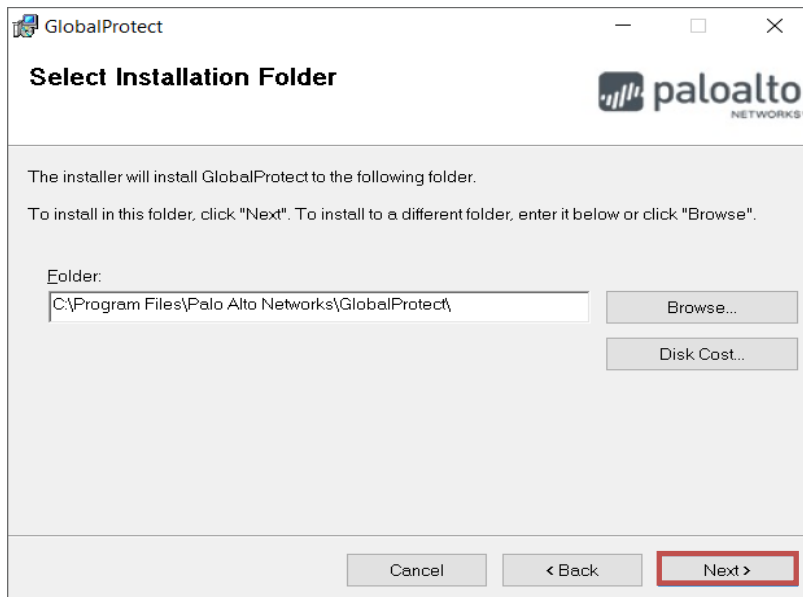
6. Click on this to begin the installation.

Global Protect Installation Instructions

7. Follow instructions

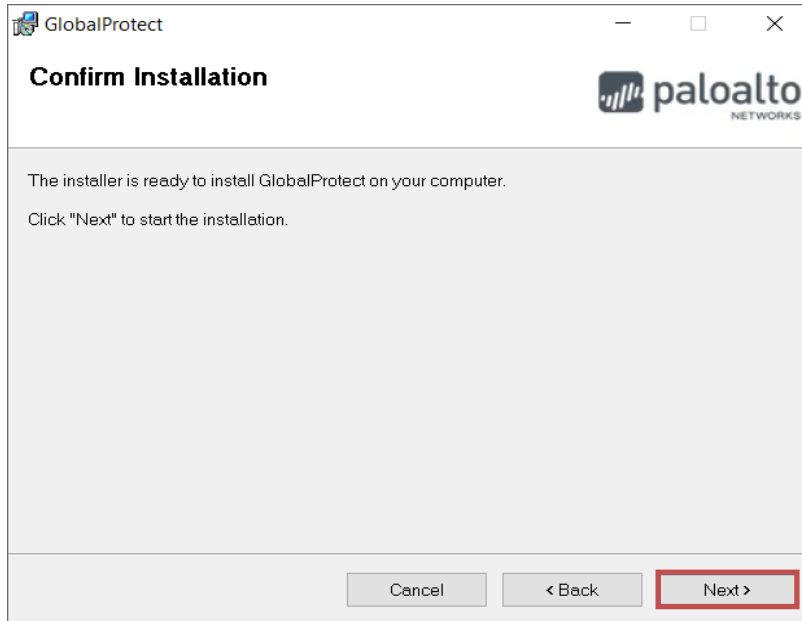


8. Click Next

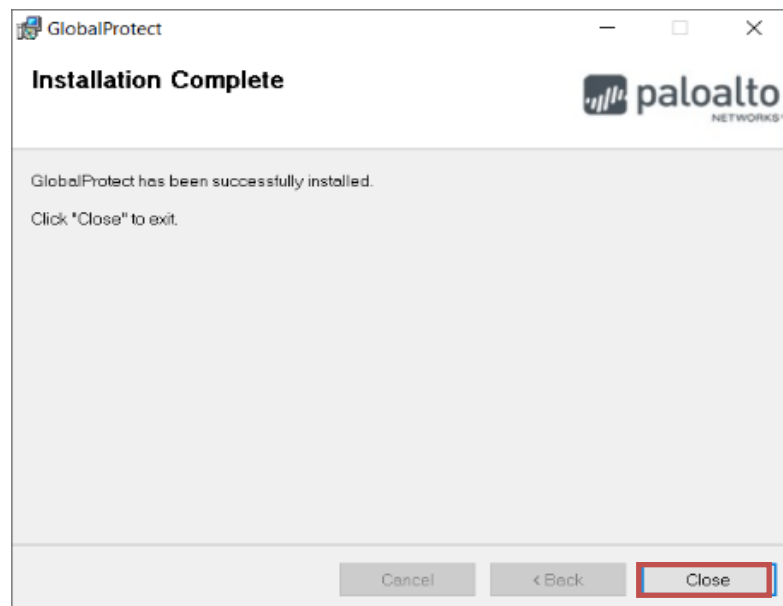


9. Click Next

Global Protect Installation Instructions



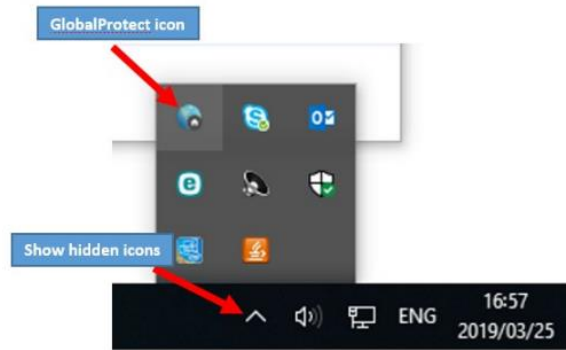
10. Click Next



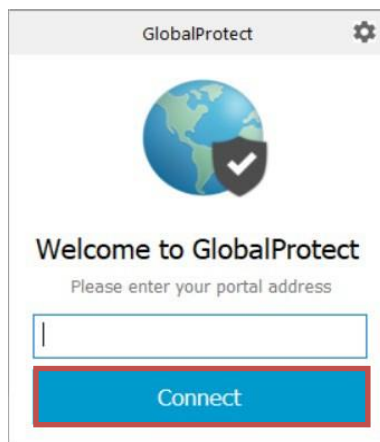
11. Click Close

Global Protect Installation Instructions

Connect to GlobalProtect



12. Once the client has been installed, the Global Protect icon will appear in the menu bar at the top of your screen for Mac OS computers, or in the notifications area of the taskbar at the bottom of the screen on Windows computers. Click the icon to set up the VPN connection, following the steps below.



13. Enter the address: **vpn.sl.on.ca** and Click 'Connect'

Note: You may be prompted for your SLC credentials again if you have never used this service before.

Congratulations!!

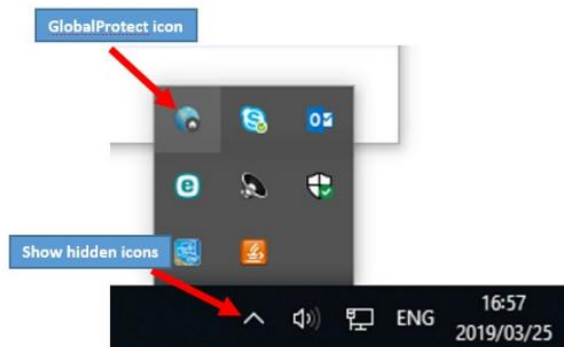
You have successfully installed and connected to Global Protect and SLC's Virtual Private Network.

Global Protect Installation Instructions

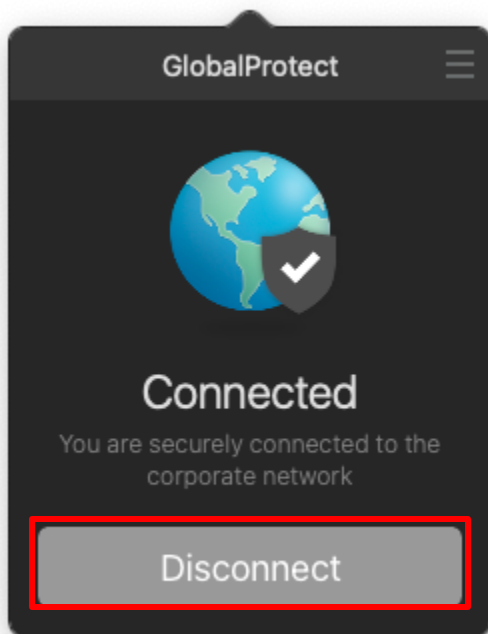
Disconnecting from GlobalProtect

It is best practice to disconnect from the VPN at the end of the day, or when you have finished the task that you needed it for.

1. Click on the Global icon in the system tray



2. The GlobalProtect box will appear, and you can click "Disconnect"



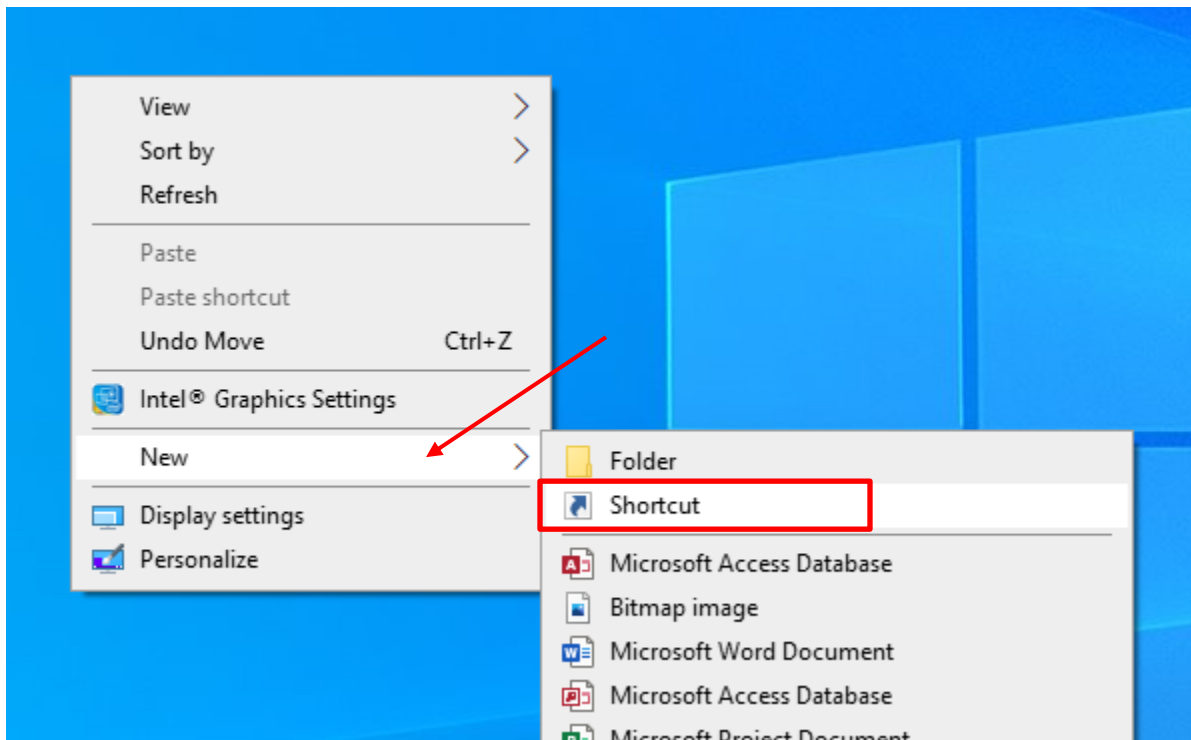
Global Protect Installation Instructions

Create Shortcuts to your Network Shares

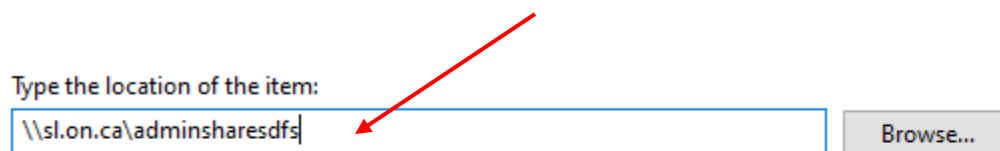
Now that you are connected to the college network, you can create shortcuts that will always be available once you are connected.

Departmental Share (S Drive:)

1. Right-Click on your Windows Desktop
2. Choose New>Shortcut



3. Type in address to S Drive: '\\sl.on.ca\AdminSharesDFS'. Click 'Next'



Click Next to continue.

Global Protect Installation Instructions

4. Give it a Name. Click 'Finish'

What would you like to name the shortcut?

Type a name for this shortcut:

S Drive



Click Finish to create the shortcut.

5. You will now find a Shortcut on your Desktop to the S Drive:

