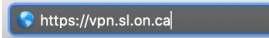


Global Protect Installation Instructions- MAC

Using **Safari**, browse to <https://vpn.sl.on.ca>



Login with SLC credentials and DUO

You should now be at the below page.



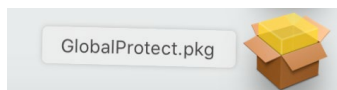
The screenshot shows the Palo Alto Networks GlobalProtect Portal. At the top is the Palo Alto Networks logo. Below it, the text "GlobalProtect Portal" is displayed. There are three download links: "Download Windows 32 bit GlobalProtect agent", "Download Windows 64 bit GlobalProtect agent", and "Download Mac 32/64 bit GlobalProtect agent". The Mac link is highlighted with a red border. Below the links, there is explanatory text for each OS type: "Windows 32 bit OS needs to download and install Windows 32 bit GlobalProtect agent.", "Windows 64 bit OS needs to download and install Windows 64 bit GlobalProtect agent.", and "Mac OS needs to download and install Mac 32/64 bit GlobalProtect agent."

Click on “Download Mac 32/64 bit Global Protect Agent”

Download will begin, look for the following Downloads button in your dock

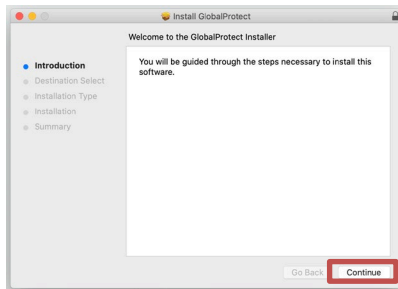


Click on this icon

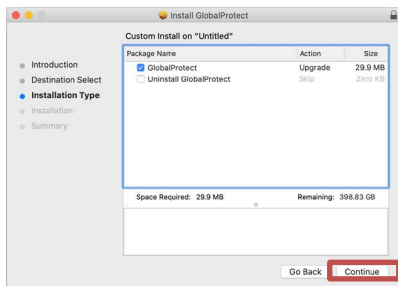


Click on this icon to begin installation

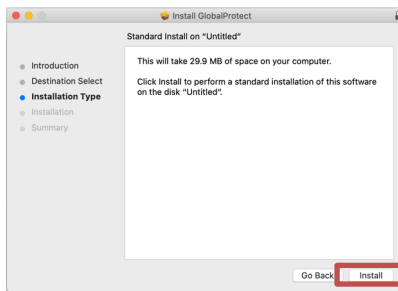
Global Protect Installation Instructions- MAC



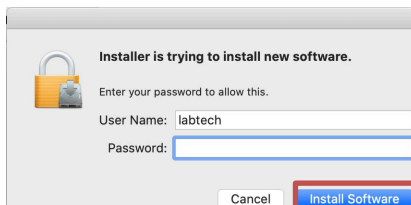
Click Continue



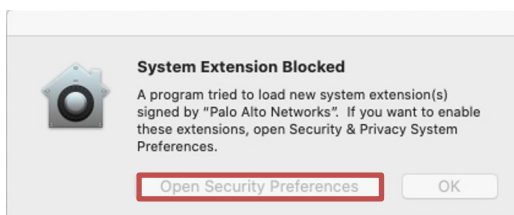
Click Continue



Click Install

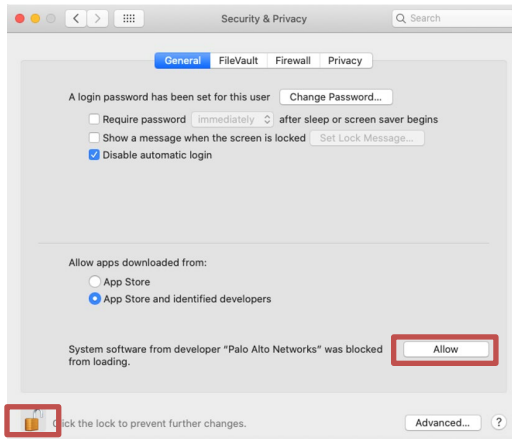


You will be prompted to allow this install, Use your Admin credentials then click Install Software

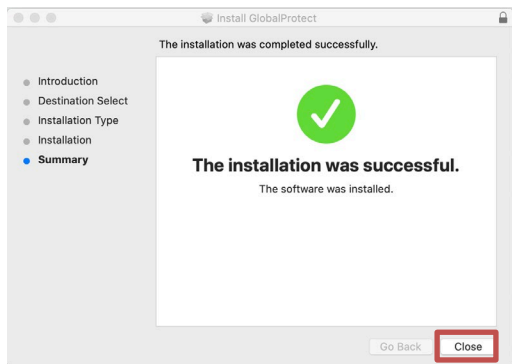


Click Open Security Preferences

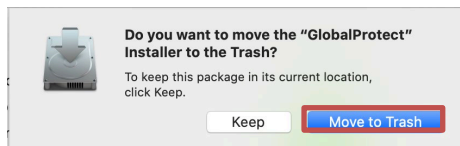
Global Protect Installation Instructions- MAC



Click Allow and Close Window (you may have to unlock)



Click Close

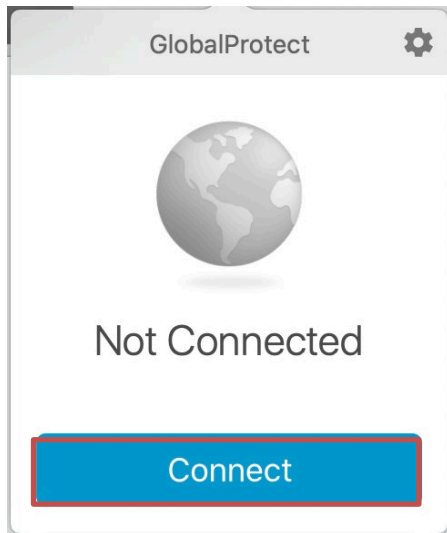


Move installer file to Trash

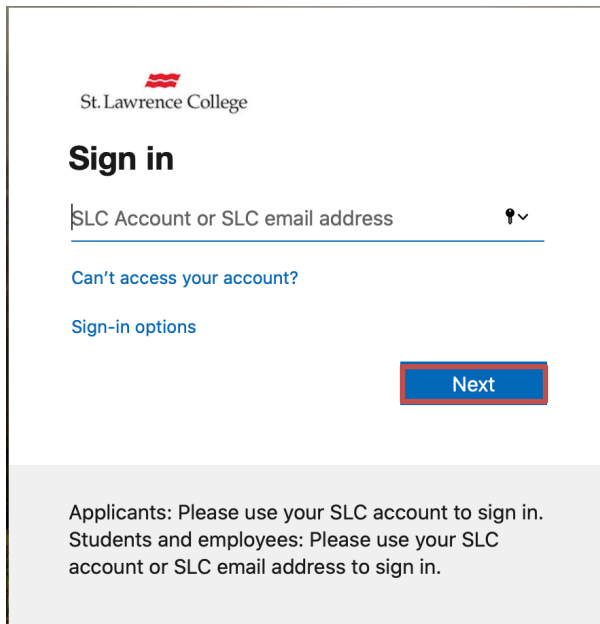
To Launch Global Protect Click on the Globe Icon in the Title Bar



Global Protect Installation Instructions- MAC




Click Connect



St. Lawrence College

Sign in

SLC Account or SLC email address 

[Can't access your account?](#)

[Sign-in options](#)

Next

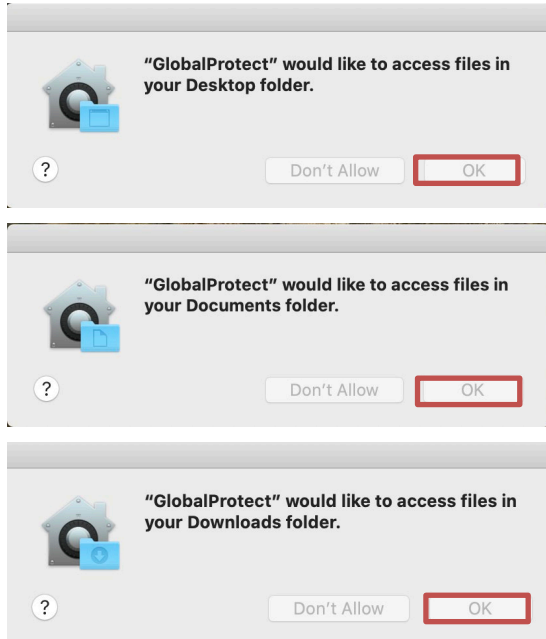
Applicants: Please use your SLC account to sign in.
Students and employees: Please use your SLC account or SLC email address to sign in.

Enter your email address and Click Next

You will re-directed to SLC.me
Login with SLC credentials and DUO

Global Protect Installation Instructions- MAC

You should be prompted to allow access to some folders



You should now be connected!!

To Disconnect Click on the Globe Icon and Disconnect.

