



St. Lawrence College

# voyageur

The Magazine for Alumni  
& Friends of St. Lawrence  
College

FALL 2010

## Success is its own Award

PREMIER'S AWARD  
NOMINEES 2010

## Vikings, Schooners and Sharks, oh my!

SLC ATHLETICS PULLING TOGETHER

# Brave New Wave

CATCHING UP WITH THE TECHNO-PIONEERS  
WHO FOUND THEIR PLACES IN THE WORLD'S  
MOST DOMINANT INDUSTRY





## Alumni Relations Mission

The Alumni Relations office exists to encourage positive engagement with our alumni, through lifelong, mutually beneficial relationships.

### How to reach us:

St. Lawrence College Alumni Office, 100 Portsmouth Avenue, Kingston, ON K7L 5A6

### Phone from:

Kingston (613) 544-5400, ext. 1635

Brockville (613) 345-0660, ext. 1635

Cornwall (613) 933-6080, ext. 1635

North America (800) 228-4664

**Fax:** (613) 545-3932 **Email:** alumni@sl.on.ca **Web site:** www.stlawrencecollege.ca/alumni

St. Lawrence College's Voyageur magazine is published bi-annually through the St. Lawrence College Alumni Relations Office and is distributed to 50,000 alumni and friends of the College. Contributions of articles and photos about or of interest to our alumni, as well as signed letters to the Editor, are welcomed and are published at the discretion of the Editor. To have your name added to our distribution list or to reserve advertising space in Voyageur, please contact the Alumni Relations Office. Ad rates are available upon request.

The views expressed in the editorials, articles, and advertisements in Voyageur are not necessarily those of St. Lawrence College, the St. Lawrence College Foundation, or the St. Lawrence College Alumni Association.

If you would like to have your name removed from the Voyageur distribution list, please send a letter to that effect, along with a completed Alumni Record Form (see inside back cover), to the St. Lawrence College Alumni Relations Office.

Reproduction of Voyageur, in whole or in part, is forbidden without the expressed written consent of the Editor.

### PUBLISHING SCHEDULE:

Issue	Copy/Ads Due	Distribution
Fall	August 1	October
Spring	March 1	May

### RATES AND TERMS

Rates and specifications are available on request. Full payment is due at time of publishing. Applicable taxes will be applied to all orders.

### AD REQUIREMENTS

Voyageur magazine is produced using Adobe CS4 for the Mac.

**Preferred format:** Mac compatible PDF or EPS files, with "type converted to curves", accompanied by colour hard-copy proof.

### PHOTO AND TEXT REQUIREMENTS

When supplying photographs for reproduction in Voyageur, we accept professional quality colour prints or 300dpi TIFF or hi-res JPEG files. Text is preferred in 12-point Times Roman with no indents or highlighting.

## On the cover

Bruce McLennan was recruited out of SLC to sell typewriters. Within six months, he was selling the brand new 'mini-computer', *Feature Story, page 4.*

## On the inside

Brave New Wave .....	4
Alumni News .....	9
College News .....	20
Alumni Chapters & Branches .....	26
Echoes .....	27
Alumni @ Work .....	30

**Editor:** Janine Foster

**Art Direction:** Erin Boyce

**Design/Layout:** Ann Jones

**Printing:** Dollco

### Contributors:

Frank Armstrong	Lee Anne Campbell
Janine Foster	Keith Hare
Frank Lockington	Mary Sibbald
Laura Tulchinsky	Guy Wales
Kim Warner	

### Photo Contributors:

Bernard Clark	Janine Foster
Frank Lockington	Henry Petrynka
Mary Sibbald	Jack Tennant

### Canada Post Publications Mail Agreement #40010391

Return undeliverable Canadian addresses to:

Development Office of St. Lawrence College  
100 Portsmouth Avenue, Kingston, ON K7L 5A6  
Email: returnedmail@sl.on.ca

# It's the click that counts



Show your support  
of SLC and make  
your gift online at

[www.givetoslc.com](http://www.givetoslc.com)

It's easy  
It's fast  
It's a great way  
to support our  
students

**Make your gift  
online today and  
start making a  
difference at SLC**

  
St. Lawrence  
College



NOTES FROM THE EDITOR

## Talented Alumni Shine

BY JANINE FOSTER | MANAGER, ALUMNI &  
ANNUAL GIVING, ST. LAWRENCE COLLEGE

**THE DIVERSITY** of talents, experiences and passions of SLC alumni is a source of constant amazement. In this issue alone, you'll meet an alumnus who has counseled six-year-old gas sniffers, another who managed the amalgamation of four paramedic services, and went on to unite two hospitals full of nurses. You'll meet the technology pioneers who helped created an industry we can't seem to live without. And welcome to our alumni ranks the honorary grads who have done everything from help impoverished of Haiti, built their business and community, and tried valiantly to stop the genocide in Rwanda.

Whew! I'm exhausted just thinking about the things they and many more alumni have accomplished.

But when I stop to think about it, I shouldn't be so surprised. Because the unique privilege of my position is not only do I get to spend a lot of time

talking to alumni, I also get to spend time with future alumni . . . the students who swamp us every September with their energy, enthusiasm, smarts, charm and creativity.

I had the great opportunity to work with Wahida Lakhani, a business student who spent the summer planning the perfect welcome for first-year business students – including a great 'surprise event' that tested the students' networking skills as they raised funds for the newly-created Business Student Initiative Fund. They were then joined by second and third year Marketing students, who not only pressed their own networks for donations, but managed to sell hundreds of Viking helmets to their fellow students to "Get Your Horns On".

To paraphrase Disney, it's obvious that the 'circle of life' is at play here: from great students come great alumni. Of course! 🚢



Wahida Lakhani and  
Viking friend



## On the Edge

BY CHRIS WHITAKER | PRESIDENT & CEO  
ST. LAWRENCE COLLEGE

### KEEPING PACE WITH MARKET TRENDS IS ONE THING. SETTING THEM IS THE NEXT FRONTIER.

**THE COVER** story in this issue about the technology pioneers who graduated from St. Lawrence College could easily apply to many more of our pioneering grads. Ontario's colleges have specialized in being at the forefront of countless new fields throughout our 43-year history. It's one of our reasons for being, and an area where we excel.

St. Lawrence has over 72,000 graduates of almost 600 programs. It's an impressive statistic. When first cited by the alumni speaker Amanda Dionne at last Spring's convocation ceremonies, I could see that many in the audience – including our about-to-be alumni – wondered just how we had managed to deliver so many programs in so few years.

But the story behind those numbers is even more compelling. For some programs – like 'Data Processing' highlighted in the cover story – it was simply a change of names. The basic elements remain, but the industry and its changing and expanding needs have necessitated changing and expanding curriculum, including the name. So Data Processing becomes Computer Programming Analyst, while Commercial Art becomes Graphic Design.

Today, St. Lawrence College is once again at the forefront of a brand new industry whose promise may be as game-changing as the widespread

introduction of computers was in the 1970s. The first graduating class of Energy Systems Engineering Technology (ESET) graduates crossed the convocation stage last Spring, just as this Fall welcomed the first class of Wind Turbine Technician students. Still in its nascent stages, we can't predict where the Green Energy push will take our grads, but we do know that they are at the forefront of the next Brave New Wave.

Keeping tabs on labour market trends, as well as the broader economic environment, is not any one person's job at St. Lawrence. It's everybody's business. We depend on the professionals who sit on our program advisory boards, our professors, our alumni and our community and industry partners to ensure that what we teach in the classrooms and labs is keeping up with the rapidly changing world beyond our doors.

And many times, we lead those changes.

The announcement a few months ago that St. Lawrence will be one of only a handful of colleges in the country to receive NSERC funding represents our next frontier. The Natural Sciences and Engineering Research Council of Canada had – up until very recently – only funded university research. The \$2.3 million grant over the next five years will allow the College to expand its applied research activities in sustainable energy technologies. We will create the Sustainable Energy Applied Research Centre as a place where stu-

dents, faculty, industry and university researchers can come together for prototype development and field testing of new and existing technologies, and technology integration.

Other programs are also making bold steps into research. From a unique collaboration between nursing students and the St. Lawrence River Institute in Cornwall, we're looking to improve the speed and efficiency in water testing that will result in faster action on beach closures due to e. coli. Meanwhile, civil engineering students are working with a regional construction company to test recycled concrete in road bed use.

These projects are made possible by the College's participation in the Colleges Ontario Network for Industry Innovation (CONII), in which the province of Ontario committed \$10 million earlier this year to expand resources for applied research. It's another sign that our brand of applied learning is and remains in demand in our communities.

Research is a small but growing segment of our work, but in many respects, it's a natural extension of the unique learning opportunities we have always delivered. From co-ops, apprenticeships and industry placements, we've always sent our students out into the community to put their learning into action. With our industry- and community-partnered research, we're now taking that learning out into the field to teach our community. 



# The Brave New Wave

**ONLY 40 YEARS AGO, SLC BEGAN TRAINING STUDENTS FOR A WORLD THEY COULDN'T EVEN IMAGINE – BUT ONE THEY'D HELP CREATE. CATCHING UP WITH A FEW OF THE TECHNO-PIONEERS WHO FOUND THEIR PLACE IN THE WORLD'S MOST DOMINANT INDUSTRY.**

BY FRANK ARMSTRONG

**IN** the 43 years since its birth, SLC has graduated some 72,000 students in over 600 different programs. True to its *raison d'être*, SLC programs reflected the needs and trends in our communities and in the wider economy. It should come as no surprise then that some of our Alumni were at the very beginning of more than a few 'new' developments. But none more so than St. Lawrence College's technology pioneers: the early graduates of the institution's first computer programming courses.

While today's College students carry powerful computers inside their mobile phones, the students of yesteryear would never have imagined such magic. After all, computing technology during the first years of the College was so new that many computer-programming students couldn't envision a career in the very field they were studying.

Taught at the College under an array of names that have evolved over the years from Data Processing to Programming Analysis, computer courses

have been offered at the College since its beginnings four decades ago.

The numbers of yearly graduates have yo-yoed up and down with economic trends such as recession of the early 1990s, the 2001 tech meltdown, and the so-called Y2K crisis, but the College continues to generate computer-trained graduates who work around the world.

In the early days of computer training at SLC, computer courses were offered as an aside to business administration diplomas. Students worked at dummy terminals without screens and wrote programs on computer punch cards fed into a reader that delivered their data only a few dozen characters at a time to an off-site mainframe computer. Understandably, programming in those days was a slow and cumbersome process. To many students, computers were near-magical calculating and sorting machines.

Here's the story of four of those former students, who have excelled in computer-related careers, and the technology changes they've seen since

their time at St. Lawrence College. The story is told in their words, as well as in those of one of their professors, and includes observations from the current associate dean of the School of Applied Science and Computing.

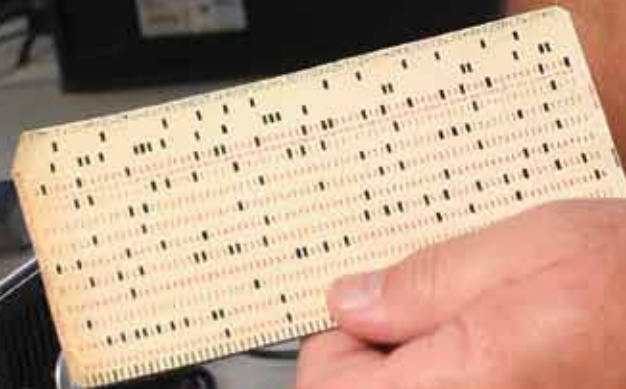
**Bruce McLennan, 1972 graduate of the Business Administration Finance program at Cornwall Campus (which included courses in data processing) and chairman of Ottawa-based Harris Computer Services:** The industry was so new that there wasn't a lot out there to be taught and everybody kind of learned together. In this data processing course you tried to write a software program—I think the language was COBOL—and you used data keypunch cards. You'd sit at this typewriter thing and you'd type in all these commands and out would come this stack of cards. You'd take the stack of cards to a technician who would put them in a computer and if you had one typo, the computer wouldn't work. That was the only experience you would have with computers back then. Computers sat in a big room and

Peter Gault relives his punch card past

nobody was allowed to go in and it was all special air-conditioning. It was a zone that very few people got into.

It was kind of strange because it was so new. In high school, we'd used manual typewriters, not even electric typewriters. I didn't ever imagine using computers and I certainly didn't imagine selling them and I certainly didn't imagine ever being a software programmer.

True to his vision, McLennan never became a programmer, but it wasn't long before he started selling computers. His first job after college was selling electric typewriters and \$800-calculators for Italian manufacturer Olivetti. Photocopiers arrived in the mid-1970s and McLennan began selling them and then dishwasher-sized computers that read data from magnetic strips on ledger cards for accounting purposes. By the early 1980s, mini-computers that cost at least \$200,000, stored as much as the cheapest PC today, and were the size of refrigerators were being sold commercially by Digital Equipment Corporation and others. In 1978, McLennan joined the 13-person Harris



*Computer Systems of Ottawa, where he sold mini-computers and custom software to help real estate companies and then construction, hydro and insurance companies mine data. He bought the business in 1998 and sold it in 2006 after nearly tripling the workforce, opening a second office in Toronto and driving annual sales to \$10 million.*

**Peter Gault, a 1976 graduate of the Cornwall Campus business administration program who majored in data processing, is president of software firm Busitech and Internet solutions company WEBtech in Cornwall:** In 1976, I believe we were the largest class of data processors for Cornwall and we were 13 people. Before St. Lawrence College, I didn't even know about computers. I was thrilled to work on them. It was like Lego: you could build wonderful things out of computers or you could automate a mundane process. You could solve problems with them and,

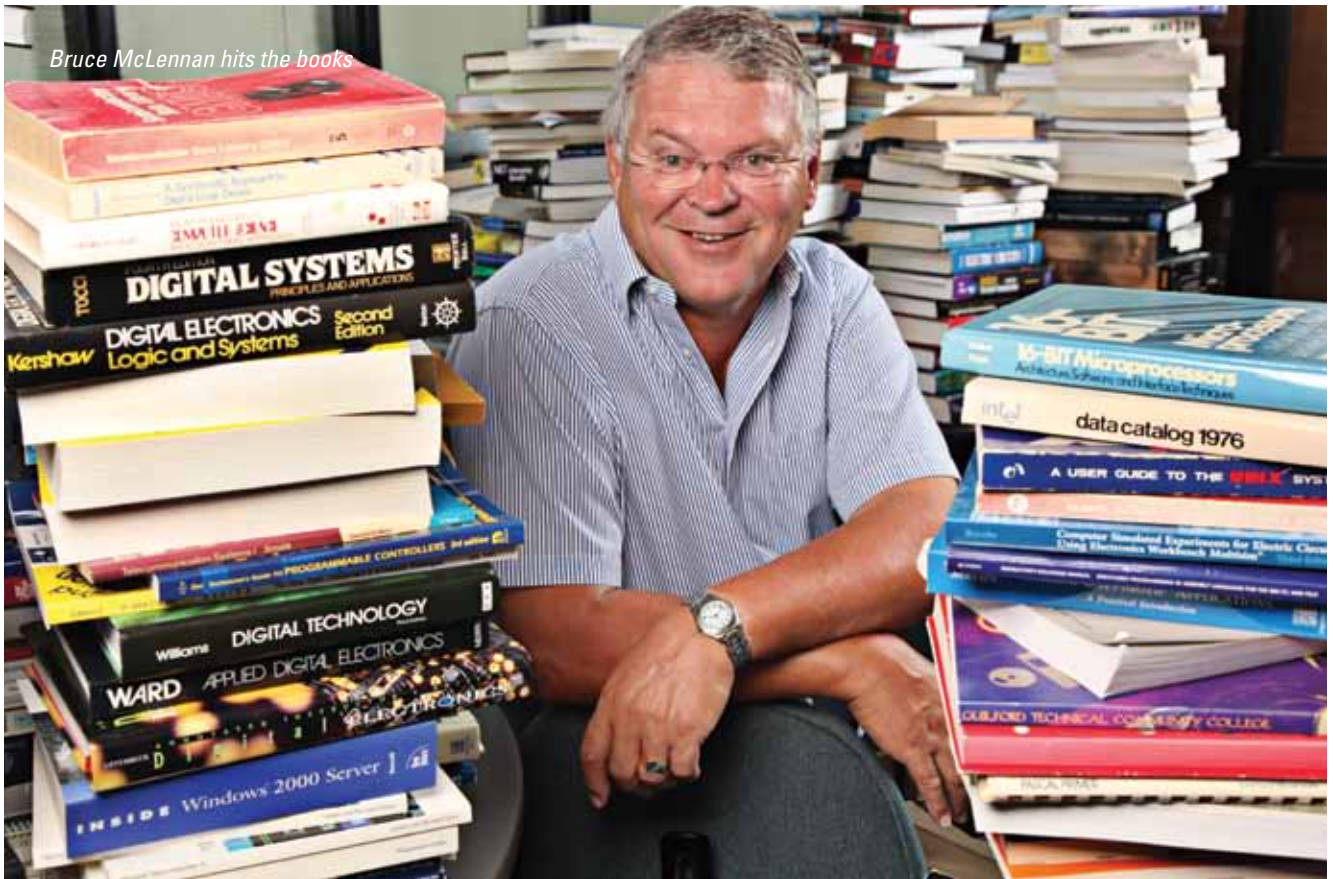
if you got it wrong, they would tell you. There were people who loved computers, but the phrase is still strong in my mind: "Help me with my computer assignments because I will never use one of these again." The guy who said that now has a laptop and a cell phone and is up on all the latest technology. Back then they called us data processors "DPs." We were the ones who had special rulers and all of those fun things.

*Gault's first job was as a programmer at Domtar where he worked from 1976 to 1988. During that time, video monitors replaced the old teletype punch cards devices he used at College. Consumers were buying PET and Commodore 64 home computers.*

*Domtar was restructured in 1988 when Gault incorporated Busitech, which now sells its statistical analysis software in 70 countries. Busitech employs five people, all former St. Lawrence College*

*students. The arrival of the high-speed Internet transformed the way Busitech does business, says Gault.*

Throughout the 1990s, I was probably away more than I was here. I used to travel around the world with 14 IBM laptops to teach people how to use the software. Now I can do it right online. They can sit in their offices and I can sit in mine. We used to be a fairly large courier-based business because all of our software would be couriered around the world to our customers. We used to do it on diskettes, then we went to CDs. Now nobody gets a CD. Everything is direct download from our servers and all our first-line support is website-based. We also have a web development company that handled local companies and organizations when nobody else was around who knew the technology to get people started on the Internet.



**Donald Berry, a senior programmer analyst at Citigroup in the Dallas/Fort Worth Area in Texas, graduated in 1986 from Business Administration at the Kingston Campus and majored in Data Processing:**

My mom suggested I go into computers, although I'm glad she said it. It wasn't punch cards anymore. They were the big, clumsy desktop screens with big monitors and green screens, which was kind of fun. However, I didn't really see how it would be used out there in the big world... But, for the article you're writing, you're looking for someone to talk about all the changes in the last 20 years. For me it was just the opposite. All the stuff I learned in school, even the things that seemed to be trivial, I've used throughout the years working on mainframe computers. Mainframes—massive workhorse computers—are still using the same computer languages I learned at College.

It was a six-week course taught at St. Lawrence College that jump-started my career. I was writing reports for Ottawa insurance company Metropolitan Life and they were having some performance problems with their files. I realized the problem area had to do with a utility program called Assembler, which I had taken in class. I read a book on Assembler and fixed the problem. I got hooked.

**Jerry Zabel taught programming languages and held various administrative positions at St. Lawrence College between 1968 and 1998. For him, the evolution away from the computer punch card was one of the most significant developments in computer programming:**

You would have a box of 2,000 cards that you would run through a card reader and it would sort of tell you where the error was. You'd then have to finger through 2,000 cards, find that one card where it said there seemed

to be a problem. You'd pull the card out, go to a keypunch, make the correction, put it back in and run 2,000 cards through the card reader again. That was the late 1960s. Now you key the program in on the keyboard on a microcomputer and it can run some very quick, initial scans. The cursor appears right on the line that is wrong, you can make the change, hit the Compute button and have it run again. For us, back in the 1960s, if you got three computer runs in a day, you would consider yourself lucky. Today, you could probably do 60.

**Shannon Claggett, associate dean of the School of Applied Science and Computing:** How do we keep up to date in curriculum? In the programming analyst program, we teach programming languages, and programming languages don't change. Our software that you and I use changes regularly, but the platforms that it's built on

# Leave a Legacy

## AT ST. LAWRENCE COLLEGE



**The St. Lawrence College Foundation provides assistance to individuals considering a personal planned gift through bequest or life insurance. Personal or family named bursaries, scholarships and awards are among the numerous opportunities donors have to leave a legacy of education at St. Lawrence College.**

For information on giving to The St. Lawrence College Foundation contact us:

**The St. Lawrence College Foundation**  
St. Lawrence College

2288 Parkedale Avenue  
Brockville, ON K6V 5X3

2 Belmont Street  
Cornwall, ON K6H 4Z1

100 Portsmouth Avenue  
Kingston, ON K7L 5A6

foundation@sl.on.ca  
1-800-228-4664





## GETTING THAT FIRST JOB OUT OF SCHOOL IS HARD, BUT WHAT ABOUT THE NEXT ONE?

You came to St. Lawrence to start your career. Now you can build on it with a unique suite of tools and networking opportunities available on-line and FREE.

- Design high-impact resumes online at a click of a button.
- Turn your resume into a website and build your online brand
- Join our Linked In Alumni Group and make connections with your fellow alumni
- **NEW:** Open to offers? Take advantage of a unique partnership with Hyland Human Resources, a Cornwall-based company whose Candidate Search Tool is used by companies across the country to find the right candidate for their open positions.

Find out more at  
[www.stlawrencecollege.ca/alumni](http://www.stlawrencecollege.ca/alumni)

don't change as fast. With the CNTS (computer networking and technical support), they do more hardware work. With hardware, the basics are there while the components get smaller. We bring in instructors who are working in the community on the latest technology. The college runs two computer programming diplomas: Computer Programming Analyst and CNTS. The first one is a three-year diploma and the other is a two-year diploma. I know our enrolment is up in those programs - we sort of run about 30 students in each of those programs - but last year there were 18 to 20 that graduated in each.

**Paul Bouvier, director of Technology at QHR Software in Kelowna, B.C., graduated in 1989 from Business Administration and Data Processing at the Cornwall Campus:**

We were a fairly large class of more than 20 people, but when we finished there were only four people in the class and I was the only one to graduate. It was a tough course, but I spent pretty much all my time on the computers. I knew I wanted to be a computer programmer right from the start. At the time, we had IBM mini-computers. There were these green dumb terminals and you did all of your development on these (in COBOL). Near the end of my third year, personal computers were starting to become prevalent. PCs were much more user interactive and I fell in love with them right from the start. They cost \$4,000 and I bought myself one while still in college. I thought they would be the tool of the future.

*The year after Paul Bouvier graduated, html, url and http came into use. Windows shipped 3.0 - a move heralded by The Computer History Museum that "moved toward the user-friendly concepts of the Macintosh, making IBM and IBM-compatible computers more popular."*

*And the rest is history... 🌊*

## Get your MBA at SLC

**PARTNERSHIP WITH CAPE BRETON UNIVERSITY BRINGS PART-TIME MBA PROGRAM TO KINGSTON CAMPUS**

BY LAURA TULCHINSKY

**QUALIFIED** applicants can complete an MBA at the Kingston campus of St. Lawrence College beginning January 2011.


The Cape Breton University MBA in Community Economic Development is designed for learners who aspire to play leadership roles in the public sector, in Third Sector organizations, and in community-minded businesses.

“We are pleased to be able to host CBU’s MBA program at our Kingston campus,” says John Conrad, Associate Dean, School of Business. “It provides yet another pathway for our graduates, and may very well be of interest to staff and faculty.”

Applicants will require a Bachelor’s Degree from a recognized university. Candidates who do not have an undergraduate degree, and show potential for success in graduate level study, may be admitted to the MBA in CED as non-traditional students. Outstanding career and/or volunteer experience are expected. Additional information regarding admission requirements is available at [www.cbu.ca](http://www.cbu.ca).

The program will be offered on a part-time basis, with students attending classes at the Kingston campus on alternate weekends.

“This is not a St. Lawrence program ‘per se,’” notes Conrad. “We are making facilities available to CBU for interested students to complete graduate studies in the application of management knowledge and skills to a vibrant sector of the Canadian economy. All administration and logistics will be managed by CBU and the degree will be conferred by CBU.”

Information sessions regarding the program will be held in Kingston later in the fall. In the interim, those looking for more information on the program should contact CBU directly at [mba@cbu.ca](mailto:mba@cbu.ca). 

---

## The Power of Partnerships

**SLC AND THE COMMUNITY FOUNDATION OF KINGSTON & AREA**

BY FRANK LOCKINGTON

**COMMUNITY** engagement remains one of the key three areas of priority in St. Lawrence College’s Strategic Plan. Describing just what this means might best be accomplished by more closely examining just one of our many community partnerships.

The Community Foundation of Kingston & Area is one of 174 community foundations which can be found in cities and towns across Canada. “I think of the Community Foundation as the community savings account and from that account we are able to reinvest in the interests and priorities of our citizens,” says James Brown, a volunteer board member with the Community Foundation and former St. Lawrence College Foundation Chair. “Like St. Lawrence College, the Community Foundation knows that the best future and the foundation of our community, evolves when the hopes and dreams of our children are married to opportunity. I am proud of the good and collaborative relationship

between St. Lawrence College and our Community Foundation and pleased to be a supporter.”

The Community Foundation’s Mission is threefold:

- to work with donors to make strategic and effective grants to projects that enhance community life;
- to grow and carefully manage a lasting endowment to fund grants;
- to serve the community as a resource and partner.

Since 1995, the Community Foundation has awarded 887 Community Grants totaling more than \$1.6 million, to almost 400 organizations. On more than one occasion, St. Lawrence College has been one of the beneficiaries. From a donor-directed fund that provides student awards to support SLC students from Prince Edward County, to support of the College’s Energy Systems Engineering Technician and Technology Programs, and their living lab, Energy House, the College is grateful to the Community Foundation and its supporters.

So too are our students. SLC students from the Students in Free Enterprise (SIFE) project recently prepared and presented a successful grant application on behalf of the Kingston Food Bank to the Community Foundation which secured \$2,500. The grant will allow the Food

Bank to purchase a freezer for perishable food donations. SIFE students have now used this seed funding to launch a new series of fund development initiatives in support of Kingston’s Food Bank.

“We have a strong group of committed student volunteers working on the Food Bank project,” says Spencer Dausset, President of SIFE and a student in the business program. “Having the confidence of the Community Foundation’s Board has inspired our team to move our community support efforts to a new level.”

But for good partnerships to be successful, the relationship needs to work both ways, and SLC has reciprocated by supporting many Foundation initiatives – including an effort this fall, when SIFE pitched in to administer a targeted community perceptions survey in support of the ‘Community Response to Neighborhood Concerns Skate Park Initiative’. The students went door to door in north Kingston seeking insight on several recent and proposed initiatives under consideration by the Foundation.

Clearly the College’s goal of developing external partnerships aligns well with our Community Foundation’s mission too, contributing to our collective sustainability. “We’re all in this together,” says James Brown. 



Heather Arthur

## Success is its own Award

MEET SLC'S 2010 NOMINEES FOR THE PREMIER'S AWARDS

**IT'S an honour just to be nominated. Isn't that what they say? Except in the case of the annual Premier's Awards, it's actually true. Each year Ontario's colleges are asked to nominate alumni whose career and community dedication intersect, reflecting and representing the remarkable impact all of our graduates have in their workplaces and their communities.**

**This year St. Lawrence College nominated four such outstanding graduates: Heather Arthur (Nursing, 1978), Andrew Leggett (CYW 1984), Katherine Porter (Fine Arts 1981) and Bruce McLennan (Business Finance 1972). While their resumes are indeed impressive, they tell only a small part of their stories. Each counts their time at SLC as the foundation for their future success, and each went on to build from there.**

### **Heather Arthur, Diploma Nursing, 1978**

Heather Arthur's nursing career began inauspiciously. At the time of graduation there were no nursing jobs and she took a position in a jewellery store. Fortunately, a position did open and she joined Cornwall General Hospital in the emergency and critical care area, returning to SLC Brockville campus to gain certification in Intensive Care Nursing. In 1981 she entered hospital management as the manager of critical care and emergency, along with respiratory therapy.

In 2000 she left the hospital setting to embark on her greatest challenge: managing the amalgamation of

several local paramedic services into one municipal service for the City of Cornwall. Challenging, political, and intense, Heather's role was to take apart four local services and rebuild them into one – at a time when municipalities were wholly unprepared for the cost and responsibility of this newly-downloaded but critical healthcare service.

In 2004, Cornwall's two hospitals merged and Heather was offered the position of Vice President, Clinical and Community Services. At that time, her role was to oversee all health professionals within the hospitals, with the exception of Nurses. However, her success in managing the merged paramedic services would be called upon again when the new Cornwall Community Hospital re-organized, and Heather was made Chief Clinical Officer with responsibility for all nurses in the newly-amalgamated hospitals. The challenge, she said, was that the hospitals were close in proximity, but miles apart in culture, philosophies of care and ideas about nursing roles. Six years later, she describes it as "two hospitals, but one nursing department."

Heather oversees the nursing departments in the two acute care facilities (representing two merged hospitals), five mental health facilities, and other clinical operations such as physio and occupational therapy. She is responsible for 550 employees providing frontline care to the citizens



Andy Leggett



Katherine Porter



Bruce McLennan

of Cornwall and surrounding area.

Heather credits the unique learning environment in the Nursing program with instilling a love of learning. At that time, the program was designed as a “milestone program” which encouraged students in self-directed study towards various milestones. She credits the program with instilling discipline, autonomy, resourcefulness and a love of self-directed learning – all of which she maintains today.

#### **Andy Leggett, Child & Youth Worker, 1984**

Andy Leggett is the Clinical Director and Co-Owner of Broken Arrow Residential Treatment Services, a private Treatment Foster Care Program licensed through the Ministry of Children and Youth Services in Ontario, with 35 Foster Homes and 65 approved beds. Andy oversees a staff of trained clinical support workers, but also meets personally with each and every child placed in his care. He is involved in day-to-day assessments, goal setting and treatment plan development and implementation with the children placed with Broken Arrow, and liaises with the government agencies in Ontario, Nunavut, Quebec and Newfoundland and Labrador, as well as the Metis, Aboriginal and Inuit communities that have made Broken Arrow a preferred care provider for some of their most troubled children.

While recognized within his profession for his innovation and what one colleague called “remarkable skill” with the most difficult-to-treat children, Andy made a name for himself among the care community – and began to earn national recognition within his field – for his work with the children of Natuashish (the former Davis Inlet). He has worked hard to gain the trust of the community and continues to be a leader in a field of treatment, known as Life Space Work, that treats children in the community rather than in group home residential settings. His colleagues paint a picture of a man who is warm,

self-effacing and approachable, who has pioneered in-mileu treatment and has been “at the front line of the worst places with the worst cases.” He has treated a 12-year-old girl whose mother “traded” her for a case of beer, six-year-old gas sniffers, and, while working at a school board, was so effective in working with troubled children, that the board began transferring all their most difficult children to the school at which he worked. Said one colleague: “I have seen him in five minutes take a scene that was going the wrong way really fast... and totally calm it down. It was amazing.”

Andy is a contributing author to the book, “Treating the Aftermath of Sexual Abuse: A Handbook for Working With Children in Care” that was published by the Child Welfare League of America and is still in use all over North America, and is a sought-after speaker at Colleges across Ontario – including regular visits to SLC, and membership in the Child & Youth Worker Alumni Branch. In May 2010, Andy addressed the Council of Canadian Child and Youth Care Associations on the topic: “Connecting and Creating Change: Skillful Life Space Work is Complex and Energetic.” A fitting description for the man himself.

#### **Katherine Porter, Fine Art, 1981**

Katherine Porter is an artist of vision. Never one to do just one thing when she could do so much more, Katherine has paired her natural talent as a community organizer, with her love of art and her passionate advocacy for social justice. As the founder and Executive Director of H’Art School, she has created a unique non-profit organization that is committed to helping adults with intellectual disabilities reach their highest potential through art and education. H’Art offers programs such as H’art Studio, which helps students build or retain literacy and life skills through art, music and drama; H’art Prep, which helps students develop

the skills and confidence needed to pursue continuing education and volunteering; and H’art Beat Dance, which helps students build fitness and social skills through dance.

While she remains a practicing artist with representation in the U.S., her life today is dedicated to nurturing the creativity of others. Her career has been a study in matchmaking – whether it was building bridges between businesses and artists in the cities of Ottawa and Hamilton through unique partnerships, or in her most recent triumph with H’art Studio – the pairing of creative seniors with aspiring artists at her school – Katherine sees connections where others see roadblocks.

And in keeping with her commitment to lifelong learning for all – especially the intellectually disabled – she has pioneered a unique agreement with Queen’s University to allow her students to audit university classes, and discover for themselves the joy of education.

“Think, observe, draw” is the ethic Katherine was taught in what she called her most challenging and rewarding class at SLC – printmaking. Her instructors instilled in her a level of discipline that required she think about the results she wanted to achieve before she even started and “I still apply it to everything I do,” she says. Except now, the drawing might be a new program for her students, a new partnership, or a new funding opportunity. She learned at SLC that “think, observe, and draw” is an approach to life and art.

#### **Bruce McLennan, Business Administration, Finance, 1972**

Bruce McLennan is the former President and CEO of Harris Computer Services. He has just completed a term on Harris’ Board of Directors, advising the new owners, to whom he sold in 2006. At the time of the sale, the company employed 35 computer professionals in the computer security and support end of the high tech industry, and had sales over \$10 million.

St. Lawrence College  
 Laurentian University  
 Université Laurentienne

**YOU WANT IT ALL...**  
 EARN A DEGREE IN BUSINESS ADMINISTRATION (BBA) FROM LAURENTIAN UNIVERSITY IN THE INTIMATE LEARNING ENVIRONMENT OF ST. LAWRENCE COLLEGE.  
 "THE LAURENTIAN BBA AT ST. LAWRENCE MEETS ALL OF MY PROFESSIONAL DEVELOPMENT NEEDS," SAID A.J. GOULD, A RECENT GRADUATE OF ST. LAWRENCE'S HUMAN RESOURCES MANAGEMENT PROGRAM.

**CONTACT US**  
 DREAMIT@SL.ON.CA  
 1-800-463-0752  
 WWW.STLAWRENCECOLLEGE.CA

**FIRST YOU DREAM IT.  
 THEN YOU LIVE IT.**  
 WWW.STLAWRENCECOLLEGE.CA

Hired out of college by Olivetti – the typewriter people – Bruce was part of a young team charged with marketing and selling the latest product, what the company called their mini-computer. Fast-forward to 1993, and Bruce and two partners took their scant experience and very little money, and purchased Harris, a company whose entire reason for being was to provide security and support to the industry they helped create. In the 13 years they owned the company, Bruce found his background in accounting, sales and marketing served him well, “and a lot of hard work and a little luck” made the company into a successful enterprise that, according to Bruce, “we were able to sell the company and have the financial resources to do some work where money is not the main incentive.”

That “work” today is his lifelong dedication to community involvement. He has been a member of the board of the Ottawa Carleton Boys and Girls Club, president of the Rideau Kiwanis Club, and remains active on the Board of Directors of the Queen-sway Carleton Hospital Foundation. In fact, it was one of his volunteer roles – as chairman of the Tour/Nortel Bikeathon in support of the Children’s Hospital of Eastern Ontario (CHEO) – that introduced him to his post-retirement career: fundraiser. He currently dedicates ten hours per week of his retirement to fundraising for the Canadian Nature Museum, which opened its renovated doors in May.

*Editor’s Note: The Premier’s Awards will be presented at a gala ceremony in Toronto on November 22. We’ll let you know the results in the December issue of Explorer, the alumni e-newsletter. If you don’t receive Explorer, update your record at [www.stlawrencecollege.ca/alumni](http://www.stlawrencecollege.ca/alumni)*

**Earn an Innovative MBA While You Work!  
 PART-TIME IN KINGSTON**

**MBA in Community Economic Development**

A popular graduate program that provides a broad educational experience in business, development, leadership, and international management - with community at its core!

**Convenient Schedule:** part-time, weekend, 2-year program hosted at St. Lawrence College. Apply to the 3rd Kingston Cohort starting January 2011.

**Specialization Options:**

- Strategic Leadership
- International Business
- Peace-Building & Reconstruction
- First Nations

Hosted at  
 St. Lawrence College

**STACIA KEAN**  
 MBA in CED '08  
 PARO Centre for Women's Enterprise, Thunder Bay  
 \$17,500 SSHRC Recipient

CAPE BRETON UNIVERSITY | Shannon School of Business | For more information: 902-563-1467 ~ [mba@cbu.ca](mailto:mba@cbu.ca)

There are countless words to describe what a St. Lawrence College education can do for the students who receive it ...

Transform  
Excite  
Motivate

Connect  
Empower  
Direct

Educate  
Engage  
Inspire  
Create

There is just one word for the alumni, parents and friends who will make gifts this year to support them:

**Essential!**



Your support helps St. Lawrence College ensure that higher education remains accessible to each and every student and that SLC continues to offer an education that is uniquely challenging and rewarding.

The gift of education pays dividends long after graduation for our students and our community.

Make your gift today at [www.givetosl.com](http://www.givetosl.com)

# Stay Connected

## ALUMNI RECORD UPDATE

Help us stay in touch with you by keeping your Alumni Record up-to-date. Complete this form and return it to the Alumni Office today.

St. Lawrence College Alumni Office,  
100 Portsmouth Ave., Kingston ON K7L 5A6  
Fax: (613) 545-3932



### WHERE ARE YOU NOW?

Name: \_\_\_\_\_ Maiden Name: \_\_\_\_\_ Date of Birth \_\_\_\_\_

Spouse's Name: \_\_\_\_\_ Is Spouse an Alumni? Yes  No

Home Address: \_\_\_\_\_  
\_\_\_\_\_

Home Phone: \_\_\_\_\_

Email: \_\_\_\_\_ Include on Alumni Web Directory? Yes  No

Employment information (or attach a business card): Employer: \_\_\_\_\_

Employer's address: \_\_\_\_\_

Preferred mailing address: Home  Business  Please send me an Alumni Card

Permanent name & phone number of a relative/friend who can always contact you:

Name: \_\_\_\_\_ Phone: \_\_\_\_\_

Please share the following notes in the Echoes updates of St. Lawrence College Voyageur Alumni Magazine:

\_\_\_\_\_  
\_\_\_\_\_

### EDUCATIONAL INFORMATION

Student or Alumni Card Number: \_\_\_\_\_  
\_\_\_\_\_

Program: \_\_\_\_\_

Campus(es): B C K Year(s): \_\_\_\_\_

Other Post-Secondary Education: \_\_\_\_\_  
\_\_\_\_\_

### EXTRACURRICULAR INVOLVEMENT AT SLC

Student Government \_\_\_\_\_ Varsity Sports \_\_\_\_\_

Awards/Bursaries Received \_\_\_\_\_

Other \_\_\_\_\_

### STAYING CONNECTED WITH YOUR COLLEGE

There are a number of ways that alumni and friends can stay connected and give something back to SLC. Please indicate any/all areas that are of personal interest to you.

- Alumni Branch and Chapter Events/Organizations
- Co-op Placements for SLC students at my workplace
- Employment Opportunities for SLC Graduates
- Part-time Studies and Continuing Education
- Full-time Academic Programs
- Corporate Training Needs
- Philanthropic Support for the St. Lawrence College Foundation
- Sponsorship of Student Awards & Bursaries (personal/corporate)
- Planned Giving (gifts made through wills or bequests)
- Suggest an alumni for the Premier's Award or and Alumni Profile
- Being a homestay family for International Students at SLC

Other: \_\_\_\_\_

NOTICE: In accordance with Section 39(2) of the Freedom of Information and Protection of Privacy Act, the personal information on this form is collected under the Authority of the Ministry of Colleges and Universities Act, RSO 1990, Regulation 770. The information is used for administrative and statistical purposes, for the notification and offering of benefits, programs and services for Alumni, and fundraising undertaken by the St. Lawrence College Foundation. It is used by St. Lawrence College, the Alumni Department and its partners, the St. Lawrence College Foundation, and /or the ministries and agencies of the Governments of Ontario and Canada. By submitting this form to St. Lawrence College, the user hereby authorizes the release of information contained herein or collected from a third party (such as a family member), to the aforementioned. Any questions concerning the collection and/or use of this information may be directed to the College's Alumni Office. Contact information is listed on page 1 of this publication.



St. Lawrence  
College

**REPORT  
ON GIVING**  
2009-2010

ACHIEVING  
LEARNING  
EXCELLENCE  
**OUR SUCCESS**  
BUILDING  
INSTITUTIONAL  
STRENGTH  
DEVELOPING  
COMMUNITY  
ENGAGEMENT



# ANNUAL REPORT FROM THE ST. LAWRENCE COLLEGE FOUNDATION

## EXPENDITURES & TRANSFERS 2009/10

Endowed Bursary Fund	\$178,238
Student Awards	345,647
Instructional Capital	79,136
Capital Projects	77,184
Operations & Events	73,998
Special Projects	14,000
<b>Total Investments</b>	<b>\$768,203</b>

## SECURED FUNDS IN 2009/10

MVS Gallery	\$6,605
Expanding Opportunities Brockville payments	102,200
Event Sponsorships	2,550
Expanding Opportunities Kingston payments	77,184
OTSS New in-year gifts	89,119
OTSS Matching funds	89,119
Annual Gift Award Sponsors	155,976
Special Gifts & Directed grants	55,392
Gifts made "in-kind"	79,136
General interest income	(2,179)
Endowment interest income	116,075
<b>Total Resources secured</b>	<b>\$771,177</b>

## LETTER FROM THE CHAIR

This past year marked our Foundation's twelfth year of operation. While economic conditions continue to weigh on the minds of many of our donors, we are seeing a heightened interest in the work we undertake to secure resources on behalf of St. Lawrence College and our students.

Direct aid for students through the College's awards, scholarships and bursaries is by far the most significant destination for our donor's philanthropic investments. This past year we presented over 450 awards to deserving students in need. We did see an increase in need from students as the overall college enrollment rose this year and student earnings from summer employment seemed to be less in 2009. Funding for student awards remains a high priority for our Foundation.

The Foundation was very pleased to be able to support 14 distinct student projects through our "Extraordinary Learning Opportunities" fund. From Nursing students in Asia to Esthetics students representing St. Lawrence College in the National Skills Competition to the CYW students hosting a regional conference, over 500 students benefitted from this particular initiative.

At Cornwall, our Foundation is working to secure funds in support of a major revitalization of our campus. We are grateful to the City of Cornwall for their commitment of \$1 million, the lead gift in our upcoming campaign. In the year ahead, we look forward to working with those who will join us in supporting this critical project.

I would ask that you join me in acknowledging the many individuals listed here who have chosen to make St. Lawrence College a philanthropic priority.

Sincerely,



Peter Gault, Chair  
Business Administration, Data Processing, '76

## BOARD OF DIRECTORS 2009-2010

Peter Gault, Chair	Bob Kilger	Shawn Geary	Harvey Rosen
Paul Fournier, Secretary	Bonnie Ruest	Kim Wright	Terry Landon
Glenn Vollebregt, Treasurer	Chris Whitaker	Lorne Weary	Greg Extence
	Gord MacDougall	Dave Henderson	Lorraine Carter

## OUR DONORS 2009-2010

### INDIVIDUAL DONORS

Evelyn A. Aboagy  
 Alex Abugov  
 Robert P. Adams  
 Dorothy Adlington  
 Diego Arvelo  
 Richard N. Aubry  
 Susan Avery  
 Catherine A. Barr  
 Dave Barton  
 David and Anne Beatty  
 Beryl Bennett  
 Shirley Bennett  
 Shelley Bentley  
 Renee Berquist  
 Rosemary Bilmer  
 Vera G. Black  
 Audrey Blair  
 Marceline Bougie  
 Lorraine S. Bougie  
 Sean M. Boulерice  
 Charles and Norma  
   Bowers  
 Denise Bowes  
 Joan and Charlie Boyle  
 Erin Braidford  
 John Broome  
 Doug Brown  
 Christina L. Brown  
 Jillian Brule  
 Arthur Buckland  
 Shawn M. Bukovac  
 Darlene Burns  
 Roberta Cairnie  
 Judith Caldwell  
 Isabel M. Cameron  
 Jeff Canton  
 Eugene Cardinal  
 Lorraine and Jeffrey J.  
   Carter  
 Susan Chamberlain  
 Brenda Charette  
 Tara R. Chenier  
 Franca Ciulla  
 Nancy A. Cleary  
 Diane Clement  
 Linda Clifford  
 Catherine Clow  
 Gladys Comeau  
 Eleanor M. Condra  
 Harris and Barbara  
   Cooper  
 Sheila Cornwall  
 Tracey D. Corrigan  
 Patrick D. Cousineau  
 Christopher Coyea  
 Catherine J. Crain  
 Audrey Crews  
 Susan Cross  
 Bill Cruden  
 Wayne and Barbara Dailey  
 Donna Davidson  
 Ioene A. Davidson  
 Frances Dawson  
 Donald D. De Groot  
 Christina Decarie  
 Elaine DeKroon  
 Frances H. Dembs  
 Marjorie A. Dixon  
 Gerry Dobbyn  
 Lynda Dowdle  
 Michael Drew  
 Angela M. Dukelow  
 Gail Easton  
 John Eby  
 Hannah Ellacott  
 David Enns  
 Gregory and Lori Extence  
 Don Fairweather  
 Brenda Faris Kremer and  
   Paul Kremer  
 Linda L. Feig  
 Victor and Helen Fenton  
 Donna L. Ferguson  
 Jill Finlay  
 Lawrence Finsten  
 Patrick Finucan  
 Ann Ford  
 Tyler and Sharon Forkes  
 Janine Foster  
 Marjorie Fowler  
 Kevin J. Frech  
 Erin A. Fretts  
 Sylvia Fry  
 Myrna Garrison  
 Linda Gauthier  
 Rosemarie Gavin  
 Lucie H. Gerritzen-  
   Stevens  
 Lorna R. Gill  
 Karen G. Gladu  
 Eric and Carole Gouldson  
 Stephen Graves  
 Kathy Gray  
 Patricia Gray  
 Joyce Green  
 Winston and Joan Green  
 Wilma Greenwood  
 Barb J. Guerin  
 Oliver Halickman  
 Norman Hall  
 LouAnne Hamilton  
 Wayne Hanson  
 Shirley M. Harris  
 Constance R. Hart  
 Rita Healey Grave  
 Mary Henderson  
 Gay Henniger  
 James C. Hoffman  
 Douglas G. Hogeboom  
 Jyneen G. Horton  
 Alice L. Howarth  
 Diane Iahn  
 Allyson James  
 Julie H. Johnston  
 Lyndon and Penny  
 Johnston  
 Reverend Geraldine  
 Johnston  
 Joy A. Jones  
 Norma and Richard Jones  
 Dr. Margaret Joynt  
 Ann A. Kearney  
 Lorraine Keddy  
 Barry B. G. Keefe  
 Isabelle Keeley  
 Patricia Kerth  
 Carla Kingston  
 Yvonne Klaassen  
 Mary Rae Knapp  
 Kelsey Kraemer  
 Diane M. Lalonde  
 Kathleen Lawton  
 Kathleen Leonhardt  
 Donna Linton  
 Frank H. Lockington  
 Heather J. Lodge  
 Domenic Lombardi  
 Jenna Long  
 Rosamond Loucks  
 John and Denise Low  
 Helen Lowe  
 Joy Lynch  
 Gordon and Shirley Mac-  
   Donald  
 Harold L. MacFarlane  
 Margaret Ann MacIntosh  
 Ron and Mary MacKinnon  
 Margaret Macleod  
 Tom M. Magee  
 James Marchand  
 Yves Marchand  
 Lorna Marchuk  
 William K. Markell  
 Cathy Marston  
 Albert Martin  
 Marjorie and John Mason  
 Charlene P. Mastin  
 Douglas and Jean Mather  
 Margaret N. D. Matheson  
 Sanford McCallum  
 Carey M. McCartney  
 Barbara McClintock  
 Elaine and John Mc-  
   Clintock  
 James and Charlene Mc-  
   Clintock  
 Mike McClintock  
 Robert McClintock  
 Gerry and Charlotte Mc-  
   Creedy  
 Terri-Lynn McDade  
 Don and Rosemary  
 McGowan  
 Jim McKay  
 Elizabeth McLean  
 Patience A. McLeod  
 Mary-Beth McMahon  
 Sylvia J. McManus  
 Kurt F. Mehrmann  
 The Honorable Peter  
 Milliken  
 Wendy E. Mitchell  
 Lacey M. Monk  
 Richard Monk  
 Margaret and John  
   Mooyman  
 Wayne and Trudy Morris  
 Steve Mortensen  
 Thelma M. Mott  
 Jim Mulvena  
 Heather Murdock  
 Martin Nadon  
 June Nalon  
 Patricia Nekus  
 Murray Newell  
 David and Maxine  
   Nicholson  
 The Reverend Father  
   Roy H. Nixon  
 Brigitta M. Nixon  
 Pat O'Brien  
 James O'Brien  
 Donna Orwell  
 Cyril Page  
 Sosamma Panakkal  
 Barbara J. Paul  
 Harold Pearson  
 Evelyn Pelton  
 Robin Penrose  
 Lynn Perry  
 Rosemary A. Petrynka  
 Henry M. Petrynka  
 Dr. John Plant  
 Robin L. G. Porter  
 Edna and Gord Porter  
 Sharon Porter  
 Kally Portieous  
 Helen and Ron Pottinger  
 Rosemary I. A. Pouw  
 Helen Purdy  
 Ann and Michael Quigley  
 Joy Raine  
 Ralph Reddie  
 Eve-Ann Reid  
 Diana C. Reyers  
 Darren Rich  
 Jeffrey Ridal  
 Gail Risto  
 Joan Roantree  
 Joanne Roberts  
 Heather A. Robertson  
 Ron and Barbara Rob-  
   inson  
 Douglas S. Roughton  
 Bryan Rowley  
 Bonnie Ruest  
 Stephen T. Runions  
 Vicki Ruthven  
 Gary D. Salter  
 Deborah D. Samms  
 Nancy Samson  
 Lois Scammell  
 Ernest W. Schaefer  
 Marc Schaefer  
 Janice Schultz  
 Chris D. Scullion  
 Wendy Sheffield  
 Eleanor Sides  
 Bob Simpson  
 Lisa M. Slack  
 George and Jean F. Smith  
 Malcolm T. Smith  
 Bob Snelgrove  
 Jody Souka-Marleau  
 Ruth Speer  
 Janice Spencer  
 Patricia Speyer  
 Joan M. Sponagle  
 Marjorie and Gary Stefan  
 Gregory D. Stevens  
 Thornley and Susan  
   Stoker  
 Norine Summerby  
 Ann M. Surch  
 Margaret E. Sye  
 Alan E. Taggart  
 Gerald Tallman  
 Carolyn Taylor  
 Robert B. Taylor  
 Catherine A. Tekamp  
 William Tennant  
 Ruth E. Thomas  
 Douglas and Wilma  
   Timleck  
 Bill and Pat Tonkins  
 Mary Townshend  
 Louis Tremblay  
 Laurel Trull  
 Robert J. Tucker  
 Julie-Anne Valliant  
 Patricia Valpy  
 Paul Van Nest  
 Michael and Andrea  
   Veenstra  
 Benoit Veilleux  
 Barbara P. Von Briesen  
 Avery F. Wagg  
 Leah and Guy R. Wales  
 Lynn Walker  
 Terry Wallace  
 Janice H. Walsh  
 Barbara and Brad Warren  
 Douglas Warren  
 Elinore Warren  
 Don Watson  
 Chris Whitaker  
 Monica Whittingstall  
 Ronald Widdup  
 Kelly Wiley  
 Terry L. Willing  
 Ken Wingert  
 Donald Young

## OUR DONORS 2009-2010

### CORPORATIONS & FOUNDATION DONORS

1000 Islands Association  
 1000 Islands Community Development Corp.  
 3M Canada  
 ACE Canada  
 Advocis, Kingston Chapter  
 Advocis, St. Lawrence Rideau Chapter  
 Afro-Caribe Community Foundation  
 of Kingston & District  
 Atkinson Home Building Centres  
 Auxiliary To Cornwall Community Hospital  
 Ballymenagh Foundation Inc.  
 Bayer Inc.  
 Bennett Lewis McMahon Stillar  
 BMO Bank of Montreal  
 Boys and Girls Clubs of Ontario  
 Brockville District Advertising & Sales Club  
 Brockville Fire Fighters Association  
 Brockville General Hospital  
 Brockville Police Athletic Association  
 Brockville Recorder & Times Ltd.  
 Brockville Women's Network  
 Brown's Fine Food Services  
 Camosun College Foundation  
 Campus Living Centres  
 Canarm Limited  
 Carefor Eastern Counties  
 Catholic District School Board of Eastern  
 Ontario  
 Central Sales Limited  
 Certified General Accountants of Ontario  
 Champions for Children Foundation  
 Children's Aid Society  
 (City of Kingston & Cty. of Frontenac)  
 CHUM Radio Brockville  
 (104.9 JR FM & 103.7 BOB FM)  
 CIBC  
 City Of Brockville  
 City of Kingston (Kingston Police)  
 Community & Primary Health Care (CPHC)  
 Community Foundation of Ottawa  
 (Jacqueline Brougham Memorial Fund)  
 Community Living – Stormont County  
 Congregation of Notre Dame  
 Visitation Province Centre  
 Conseil de la Nation Huronne-Wendat  
 Cornwall Academy of Medicine  
 Cornwall Business Association  
 Cornwall Chamber Of Commerce  
 Cornwall Electric  
 County of Lennox & Addington  
 Cow Patti Theater Company  
 Cunningham Swan Carty Little & Bonham  
 LLP  
 CUPE Local 109  
 D.V. Burnett Scholarship Fund  
 Daltco Electric & Supply Ltd.  
 Developmental Services of Leeds & Grenville

Dominion Biologicals Limited  
 Dynatech 2000 Inc.  
 Encore Seniors Education Centre  
 Fine Arts Alumni of St. Lawrence College  
 Free To Become Preschool  
 Frontenac Community Mental Health Ser-  
 vices  
 Gamma-Dynacare Medical Laboratories  
 Gananoque Secondary School  
 George Caners Chartered Accountant  
 Professional Corporation  
 Gibson Holdings (Ontario) Ltd.  
 Girls Incorporated  
 Glengarry Inter-Agency Group Incorporated  
 Greater Kingston 10 Pin Scholarship Fund  
 Hansler Smith Limited  
 Hill's Pet Nutrition Canada Inc.  
 Hotel Dieu Hospital – Kingston  
 Hotel Dieu Hospital Nurses Alumni  
 In A Word Communications  
 International Scholarship & Tuition Services  
 Inc.  
 iStorm New Media  
 Kemptville District Hospital  
 Kingston & District Kennel Club  
 Kingston Community Credit Union  
 Kingston Family YMCA  
 Kingston Humane Society  
 Kinsmen Club of Prescott  
 Knights of Columbus  
 LifeLabs Medical Laboratory Services  
 Maritime Fest  
 Master Insulators' Association of Ontario Inc.  
 McCoy Bus Service & Tours  
 Napanee District Community Foundation  
 Nepean Girls Hockey Association  
 Northern Cables Inc.  
 O'Farrell Financial Services Inc.  
 Omni Health Care Limited  
 Ontario Association of Certified Engineering  
 Technicians & Technologists (OACETT)  
 Ontario Provincial Police Youth Foundation  
 Ontario Veterinary Medical Association  
 OPSEU  
 OTA Education Foundation Inc.  
 Oxoid Inc.  
 ParaMed Home Health Care  
 Pepsi Bottling Group  
 Perth & Smiths Falls District Hospital  
 Profile Kingston  
 Providence Continuing Care Centre  
 Quinte Children's Foundation  
 RKJL Foods Ltd. (McDonald's – Kingston)  
 Rotary Club of Brockville  
 Rotary Club of Cornwall  
 Royal Canadian Legion #160  
 Royal Canadian Legion Branch No. 19  
 Royal Canadian Legion Ottawa Poppy Fund  
 S. D. & G. Chartered Accountants Association  
 Scholarship America

Shell Canada Products Limited  
 SLC Brockville Alumni Branch  
 Sodexo  
 Somagen Diagnostics Inc.  
 St. Brigid's Summer Camp  
 St. Lawrence College Retirees Association  
 St. Margaret's United Church  
 St. Mary's of The Lake Hospital/Providence  
 Care  
 Student Administrative Council – Brockville  
 Student Union – Cornwall  
 TechniCAL Systems 2002 Inc.  
 The Justin Eves Foundation  
 The Pas Health Complex Auxiliary  
 The Toucan  
 Tibbs Transport  
 Tim Horton's – Brockville  
 Tim Horton's Advertising & Promotion Fund  
 (Canada) Inc.  
 Toor & Associates Inc.  
 Toyota Canada Inc.  
 Two/Ten Foundation Of Canada  
 Upper Canada District School Board  
 Utilities Kingston  
 Walkerton Clean Water Centre  
 Xerox Canada Inc.

“ **THANK YOU  
 FOR CHOOSING ME  
 FOR THIS BURSARY,  
 IT MEANS A GREAT  
 DEAL AND I WILL  
 CONTINUE TO DO  
 MY BEST DURING  
 MY TIME HERE.** ”



## Leaders develop here.

### LEADERSHIP FOR MANAGERS CERTIFICATE PROGRAM

Truly inspire others. Enhance your ability to manage change. Uncover solutions for your pressing business challenges. Whether you are a seasoned manager or an emerging leader within your organization the Centre for Corporate Learning and Performance Improvement can help propel your aspirations.

**Join our next program.**

For more information contact:  
Donna Silver-Smith,  
613-544-5400, ext. 1421  
corporatetraining@sl.on.ca



**CENTRE FOR CORPORATE LEARNING AND PERFORMANCE IMPROVEMENT**



[WWW.STLAWRENCECOLLEGE.CA](http://WWW.STLAWRENCECOLLEGE.CA)



## NEED A CAREER CHANGE?

**START IN JANUARY, BE JOB-READY IN 8 MONTHS!  
NEW! FINANCIAL SERVICE PRACTITIONER  
PROGRAM AT ST. LAWRENCE COLLEGE**

This intensive two-semester program will prepare you for sales and marketing in the rapidly growing financial service industry. While you learn you earn credits towards your designation as a CFP (Certified Financial Planner) Professional or a CLU (Chartered Life Underwriter). The program includes the Life Insurance License and Canadian Investment Fund Course (CIFC).

Through the two semesters you will complete two field placements giving you valuable work experience.

***Get on the right path to developing a successful independent financial services practice.***

**FOR MORE INFORMATION:**

John Conrad, School of Business  
St. Lawrence College  
613-544-5400 ext. 1327  
jconrad@sl.on.ca



## Alumni get a Sneak Peek

With only a week before Cornwall Campus welcomed students for the 2010/11 year, alumni and their families took advantage of the opportunity to get a look at the work that's been underway as part of the first phase of the campus' revitalization efforts. About 200 guests toured the new spaces, remembered old places (one alumni couple found themselves standing in the exact place they'd met many years before!), and enjoyed a BBQ by the riverside, with music from fellow alumna, Nancy Beaudette, Graphic Design, 1981.





*Terry Landon, Jan Munro  
and Peter Gault*

## Grads to Co-Chair Campaign

BY FRANK LOCKINGTON

**ST. LAWRENCE** has turned to two exceptional alumni to lead our Foundation's fundraising campaign in support of the College's Cornwall campus. Peter Gault (Business Administration Data Processing 1976) and Terry Landon (Resources Engineering Technology 1972) will Co-Chair **The Difference We Make Campaign**.

Peter and Terry have enjoyed successful careers in their respective businesses as well as through their community leadership with organizations including the Cornwall Chamber of Commerce. Both Peter and Terry currently serve on the board of the St. Lawrence College Foundation.


The College's Cornwall campus is in the midst of its most extensive redevelopment since the opening of Aultsville Hall in 1975. Plans call for a \$13.5M retrofit of Moulinette Hall. The federal and provincial governments have both invested in the project, investing \$5 million each. Construction work is already well underway and a portion of Moulinette was ready for students attending classes this fall. Construction is expected to be completed in 2011.

"We're excited to be part of this important project," says Terry Landon. "We all know how critical the College is to the long term sustainability of our community. St. Lawrence is our community's college. We owe our community's youth the opportunity to access the best in post-secondary education."

"St. Lawrence offers 'work ready' academic programs, financial aid for deserving students in need and soon, an extraordinary learning environment," says Peter. "We'll be asking all those associated with the college to consider the difference St. Lawrence has made in their lives and to then consider supporting the campaign."

Plans for **The Difference We Make Campaign** are in place. The campaign will roll out in phases over the next 18 months including appeals to staff, students, alumni, graduate employers and community leaders. Funds raised will support three key initiatives including a \$3 million contribution toward capital construction and equipment costs in Moulinette Hall, \$1 million for the Foundation's endowed bursary fund to support annual awards, and the establishment of a new \$500,000 academic program development fund. With a total goal of \$4.5 million, the campaign received a huge boost earlier this year when Cornwall City Council approved an investment of \$1 million towards the project.

Cornwall native, Jan Munro of Maxville has joined the College's Development Office and will serve as Campaign Director. Jan brings extensive fundraising experience to the project and will play a key role in supporting the efforts of our campaign volunteers.

More information regarding the redevelopment project and **The Difference We Make Campaign** can be found by visiting the college website at [www.stlawrencecollege.ca/thedifferencewemake](http://www.stlawrencecollege.ca/thedifferencewemake). 

Season sponsor:



**1000 Islands**  
COMMUNITY DEVELOPMENT CORPORATION

## St. Lawrence College Stage

SEASON 2010-2011

Showcasing the St. Lawrence College Music Theatre Performance Program

### WHITE CHRISTMAS *Perfect for the holidays!*

December 9-11, 8pm  
December 12, 2pm  
@ Brockville Arts Centre

### NEW FACES *emerging stars from the Music Theatre program*

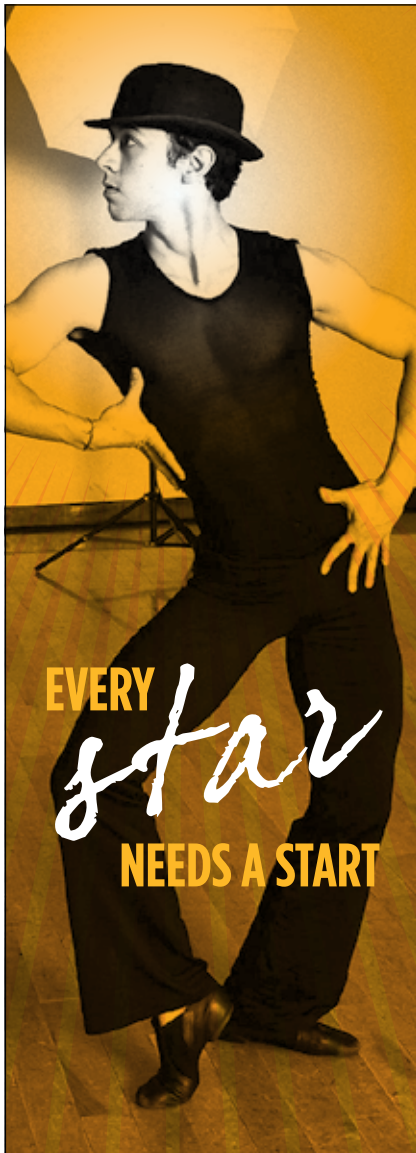
March 4, 2011, 8pm  
@ Brockville Arts Centre

### FIDDLER ON THE ROOF *The enduring classic, Tony-award-winning musical*

April 14-16, 2011, 8pm  
April 17, 2010, 2pm  
@ Brockville Arts Centre

For all shows at the Brockville Arts Centre, contact the box office:  
[www.brockvilleartscentre.com](http://www.brockvilleartscentre.com)  
613-342-7122

  
**St. Lawrence College**



**EVERY**  
*star*  
**NEEDS A START**

Become a friend today and help make dreams come true. *Friends of Music Theatre* are privy to special benefits.

**Join today, go to [www.givetoslc.com/musictheatre](http://www.givetoslc.com/musictheatre) to make your gift and find out more.**


  
St. Lawrence  
College  
FOUNDATION

## Project Hero

### SCHOLARSHIP SUPPORTS THE FAMILIES OF THE FALLEN

**ST. LAWRENCE** College has joined colleges and university across Canada to offer a new scholarship for families of fallen Canadian soldiers. This scholarship program is designed to aid children of soldiers killed during combat or peacekeeping missions. Each year one St Lawrence student will receive six semesters of tuition for a full time program. Eligible candidates must be under 26 years of age and entering the first year of any diploma program. Since 2002, 150 members of the Cana-

dian Forces have been killed in Afghanistan; a fact brought close to home when St. Lawrence alumna Master Cpl. Kristal Giesebrecht, a medic killed in Afghanistan last summer, was laid to rest in July. (See Passings, page 28) Chris Whitaker, president and CEO of St. Lawrence College stated, "To offer access to education for children of our fallen soldiers is one way we can attempt to give back to those who gave their lives for our freedoms."

— *Mary Sibbald* 

## Students are the ultimate winners

### 17TH ANNUAL ST. LAWRENCE COLLEGE FOUNDATION GOLF TOURNAMENT

BY KATHY GRAY

**THIS** event, which sells out quickly every year, is a combination "friend-raiser" and "fundraiser" for the Foundation. The St. Lawrence College Foundation oversees the various fundraising activities undertaken on behalf of the College, as well as the management and allocation of the funds received. The proceeds from this year's tournament will be used to support enhanced learning opportunities for students at St. Lawrence College.

The 2010 tournament was held at Smuggler's Glen on May 27 and was again a great success. The Foundation is pleased to recognize our Corporate Sponsors who are listed below whose

continued participation ensure this is one of the best tournaments in the area!

The Foundation seeks additional sponsors for the event each year. Next year's tournament is scheduled for Thursday, May 26, 2011 location to be determined. To have your name added to the list of invitees or to discuss sponsorship opportunities, please contact the College's Development Office at 800-228-4664.

#### INFORMATION AND REGISTRATION

Brockville: 613-345-0660, ext. 1635  
Cornwall: 613-933-6080, ext. 1635  
Kingston: 613-544-5400, ext. 1635  
Fax: 613-545-3932 [Foundation@sl.on.ca](mailto:Foundation@sl.on.ca)

Ameresco Canada Inc.  
BMO Bank of Montreal  
Brookgate Investments  
Limited  
Brown's Fine Food Services  
CIBC Commercial Banking  
Canarm Ltd.  
City of Cornwall  
CommVault  
Com-net  
Cunningham Swan

Emmons & Mitchell  
Construction  
Empire Life  
Gerr Audio  
Distribution Inc.  
Hicks, Morley, Hamilton,  
Stewart, Storie, LLP  
IBM Canada Inc.  
John Gordon  
Construction  
KPMG

McCoy Bus Service  
& Tours  
Pepsi Bottling Group  
Pricedex Software Inc.  
RESolutionsTECH Inc.  
Shell Canada  
Products Ltd.  
Shoats & Zaback Architects  
Sodexo  
Thompson Rosemount  
Group/Genivar  
Xerox Canada

## Where grads and industry meet:

### POST-GRAD FINANCIAL SERVICES PROGRAM PERFECT FOR ALUMNI

**THE** financial services industry is dynamic, fast-paced and full of opportunity. And a new program that's designed for graduates is the fast track to the fast lane.

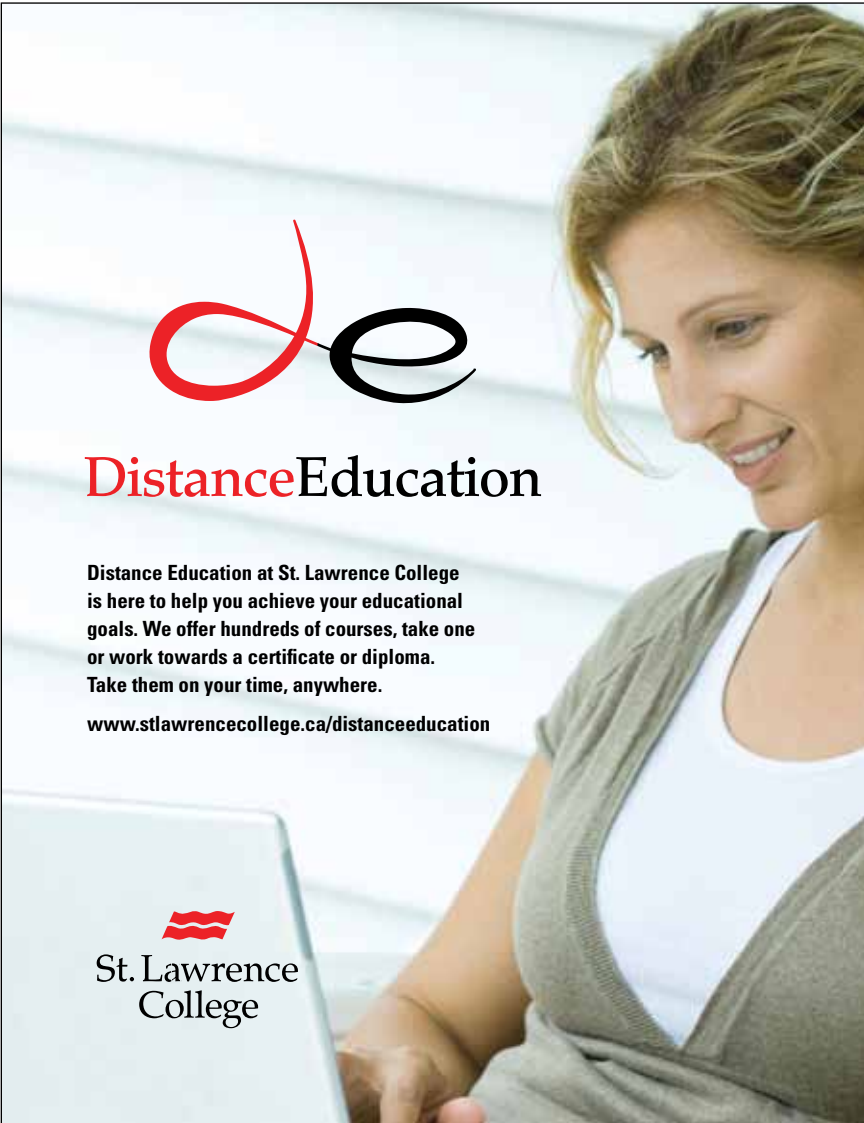
The Financial Services Practitioner Program starts this January and is the product of a unique collaboration between the financial services industry, Seneca, Niagara, and St. Lawrence colleges. The intensive two-semester program is designed to prepare students to be a professional in the area of sales and marketing in the financial services industry, developing the skills necessary to build a practice in life insurance, living benefits, wealth management and group insurance.


Graduates will also have core competencies in developing comprehensive financial plans to meet the needs of individuals, families and businesses.

Graduates of the program complete a portion of the coursework for eligibility to write the CFP's (Certified Financial Planner) Professional Competency Examination as well as credits towards their CLU (Chartered Life Underwriter) designation. In addition, they can secure one credit (of the ten required) leading to eligibility to write the internationally recognized FLMI designation (Fellow Life Management Institute).

The program is open to graduates of any three-year college diploma program (or university degree), though a combination of education and experience will be considered.


Find out more about the program by contacting Coordinator John Pirrie at [jpirrie@sl.on.ca](mailto:jpirrie@sl.on.ca) 



  
**Distance Education**

**Distance Education at St. Lawrence College is here to help you achieve your educational goals. We offer hundreds of courses, take one or work towards a certificate or diploma. Take them on your time, anywhere.**

**[www.stlawrencecollege.ca/distanceeducation](http://www.stlawrencecollege.ca/distanceeducation)**

  
**St. Lawrence College**



  
St. Lawrence College

## Marianne van Silfhout Gallery

**St. Lawrence College, Brockville campus**

We invite you to discover our state-of-the-art community art gallery. For information on upcoming exhibitions please call 613-345-0660, or email [mvsgallery@sl.on.ca](mailto:mvsgallery@sl.on.ca)

**GALLERY HOURS:**  
**Tuesday to Friday 10:00am to 8:00pm**  
**Monday & Saturday 10:00am to 4:00pm**

 **Marianne van Silfhout Gallery at St. Lawrence College**





Neil Burke



The Hon.  
Romeo Dallaire



Tammy Babcock



Jenna Lambert

# Integrity and Compassion: At home and around the world

SLC HONOURARY DIPLOMA RECIPIENTS MAKE A DIFFERENCE | BY MAGGIE STEVENS

**HONORARY Diplomas are the highest form of recognition that St. Lawrence College can bestow. They are awarded to individuals or organizations whose accomplishments are of such a high degree of excellence that they can be held up as role models, and serve as an inspiration to our graduates and the College community.**

**CORNWALL CAMPUS:**

**Neil Burke:** Neil Burke is the president of Brookgate Investments Ltd. and previous owner and president of Brookshell Pontiac Buick Ltd. Neil has been honoured with numerous awards including Lifetime Business Achievement in 1999 and Executive of the Year in 1994 by the Cornwall Chamber of Commerce. In 1992, he was the recipient of the Canadian Confederation Medal for community involvement. A committed and dedicated volunteer, Neil is a tireless worker for the many

causes he has become involved with over the years. In particular he has worked with the Cornwall Community Hospital, where he was a member of the 'Our Hospital – Our Future' Campaign Team. He is also a member of Team Cornwall, a community advocacy organization that promotes the City across Canada and beyond. Neil served six years as a member of the St. Lawrence College Board of Governors and was also the Governor representative on the St. Lawrence College Foundation Board of Directors. He supported the St. Lawrence College Foundation where he served as a Director for three years.

**BROCKVILLE CAMPUS:**

**Lieutenant General the Honourable Romeo Dallaire, O.C., C.M.M., G.O.O., M.S.C., C.D.** Romeo Dallaire graduated from the Royal Military College of Canada in

1969 and finished a distinguished career in the Canadian Armed Forces 36 years later as a Lieutenant-General. During that time he commanded at every level from artillery battery to the command of the 1st Canadian Division. It was one particular command that propelled him to international renown; that of Commander, United Nations Assistance Mission for Rwanda in 1993-1994. With a small, ill-supported multi-national force, he stood bravely and with grim determination, against the forces of genocide. In great danger and under immense pressure to withdraw, he adamantly refused, arguing that he must save who he could and then bear witness for the world against this assault on humanity. His firsthand account of these harrowing events is contained in *Shake Hands with the Devil: The Failure of Humanity in Rwanda*.

On his return to Canada, Senator Dallaire continued to serve and advocated for those soldiers, sailors, airmen and airwomen, who by virtue of their service to their country, became victims of Post Traumatic Stress Disorder and other mental afflictions. Appointed to the Senate in 2005, Senator Dallaire demonstrates that the despite horrifying adversity, if we hang on to our humanity, all is possible.

#### **KINGSTON CAMPUS:**

**John Wright:** John Wright is an entrepreneur who has been involved in the start up and development of several businesses over the past 30 years. From a background in the broadcasting business, John branched out to the hospitality industry, including Kingston Thousand Islands Cruises.

John launched K-ROCK 105.7 on March 19, 2001 – it has been a community and ratings leader ever since. In March of 2004 KIX Country was launched followed by The Lake 102.7 in January 2008. He has also played an active role in many aspects of the Canadian radio broadcasting industry, including serving three terms as Chair of the Radio Bureau of Canada.

He is a major employer of SLC grads and a champion of literacy in the community and supports numerous charitable organizations. John led the media sector in supporting the SLC Expanding Opportunities Campaign in 2002 and was awarded the Kingston Chamber of Commerce Business Achievement Award in 2003.

**Tammy Babcock:** Boxing Day 2004 changed everything for Tammy Babcock. Even though she was living many thousands of miles away, and was not personally impacted by the massive tsunami that devastated Southeast Asia, she was prompted to act. She spent six out of the next 18 months of her life in Thailand, working to rebuild houses and to teach English.

Babcock learned of the plight of the people of Haiti, and those living

in squalor in Port au Prince. After her first trip there, she founded the humanitarian organization, Help Tammy Help Haiti, an operation that works directly with the people impacted by disease, homelessness, crime and serious health issues. She has set up an education program for local youth, and is providing jobs for 25 local adults. Her current project is helping with post-earthquake rebuilding, including the construction of a self-contained medical clinic.

**Karen Sutherland:** Karen Sutherland is the owner of eight local McDonald's restaurants. As a tireless and devoted volunteer, Karen is involved in countless child-focused organizations including Ronald McDonald Children's Charities, the Boys and Girls Club, and the United Way.

Karen is a steadfast and dedicated volunteer who not only donates her resources, but also her time. Karen also ensured that the YMCA received the largest donation ever given in Canada from the Ronald McDonald House Charity and has been recognized by the Rotary Club with the Paul Harris Medal.

A tremendous supporter of St. Lawrence College, she welcomes the opportunity to support our graduates as they embark on their career path.

**Jenna Lambert:** At 19 years of age Jenna Lambert has accomplished more than most people do in a lifetime and her determination and positive outlook on life has touched the lives of many. The Harrowsmith native is a Sydenham High School graduate and is currently taking a year off to train as an international level para-athlete, coached by Vicki Keith.

Born with Cerebral Palsy, she has never allowed her physical disability to stand in the way of her dreams. In 2006, with her 'Kid for Kids Marathon', Jenna became the first female athlete with a physical disability to swim across Lake Ontario. This past

September Jenna participated in '2 Journeys 1 Dream'; Jenna's journey consisted of a 50-hour, one-woman, 270 km triathlon and Jenna and her sister Natalie's dream is to raise awareness and funds for the Y Knot Abilities Programs. For her efforts, Jenna has raised over \$240,000.

**Daren Dougall:** Daren Dougall has been the Executive Director at the Youth Diversion Program since 1985. Under his guidance, the agency has grown to deliver both Youth Justice and preventative programs to over 700 youth each year. Daren has presented workshops on community-based youth justice programming at conferences locally, nationally and internationally, and over the years, he has been involved in board work at with a number of local organizations, including the Boys and Girls Club, the provincial Community Justice Association, and the Kingston Community Health Centre. At SLC, he has served on the Kingston campus Child and Youth Worker Advisory Council. At present he is co-chair of the KFL&A Children and Youth Services Steering Committee.

He has been involved in the development of several unique programs, including a transitional learning centre, an alternative to home suspension program, and various cognitive skills based programs.

*The College accepts nominations for Honorary Diplomas on an ongoing basis. However, only nominations received by January 21, 2011 will be considered for presentation during spring 2011 convocation ceremonies.*

*To make a nomination or for more information please contact: Gordon MacDougall, Vice President Student & External Affairs, gmacdougall@sl.on.ca or through the campus nearest you, extension 1298. 📧*



# Vikings, Schooners and Sharks, oh my!

SLC ATHLETICS IS BUILDING SCHOOL SPIRIT THROUGH SPORT | BY KIM WARNER

**It's been 18 months since St. Lawrence College Tri-Campus Athletic Director Brad Greenwood assumed his role to oversee athletics on all three campuses, with a mandate to bring Athletics in line with a One College: Three Campuses philosophy. We sat down to catch up on the progress so far.**

**Q. Can you describe some of the changes you have made in Athletics?**

A. Part of the premise I was hired on was to bring Athletics in line with the overall vision of One College, as outlined by College president, Chris Whitaker. It meant looking at Athletics not as three separate entities, but as a whole, and the role that we play in enhancing the student experience at every campus. Symbolically, that change in view meant a big difference in how we – and others – view SLC. Just looking at the collective buying power of the three campuses - as opposed to operating independently as we have in the past – has had its payback in our recent apparel and equipment deal. By combining our buying power, we quickly realized we are no longer on the lower end of the Ontario Colleges Athletic Association (OCAA) and now sit on the upper end of the colleges and realize the benefits we can have and pass on to our student-athletes. Over and above this, the biggest change has been clearly defining expectations for varsity athletes and a

concentrated effort on defining varsity athletics, intramural and recreational opportunities that are all handled by our department. Lastly some of the biggest changes would be in terms of visibility of our athletic programs both internally and externally to the College.

**Q. Kingston Vikings, Cornwall Sharks and Brockville Schooners – how do you ensure these identities are not lost as you revamp the department?**

A. One of the first things I recognized is how important identity is to each campus. However, with the overall mission and vision being One College, this can often prove difficult to manage in terms of brand awareness in external marketing. In light of this, we are embarking this fall on a branding strategy for St. Lawrence College Athletics whereby we will ask our stakeholders for their input on this issue and allow the data to guide our decisions moving forward in how we brand Athletics across the three campuses.

**Q. Where do you see Athletics fitting in to the college experience?**

A. There are a multitude of studies out there that clearly support the importance of athletics and the overall college experience. By this, I mean the broad definition of athletics which encompasses varsity, extramural and recreation sports. Scholars have proven that students engaging in athletic endeavours while enrolled in college generally

result in higher graduation rates, and, on average, better performance on tests and assignments. Over and above this, athletics from a varsity perspective in particular, provides the vehicle for the entire college to engage in spirit building activities that attain and maintain a sense of pride for the college. Athletics are a central rallying cry that few other aspects of college life can provide. They are not faculty or program specific and everyone is welcomed, be it as a spectator or an active participant.

**Q. How can Athletics Alumni play a role?**

A. From my perspective, once a Viking, once a Shark, once a Schooner, always a Viking, always a Shark and always a Schooner. I believe that this is one area in Athletics that we really need to improve upon. We need to recognize those that have put forth tremendous efforts to represent us in the past and keep our Athletic Alumni involved in our programs moving forward to help shape and mold the future of Athletics at SLC. First and foremost, we encourage all of our alumni to come out and support our teams. Athletics is also working with the Alumni Relations and Annual Giving department to develop more and varied opportunities for our alumni to get more directly involved with specific sports or the athletic department in general.

**Q. Where do you see SLC Athletics in five years?**

A. The recruiting of quality athletes is an area that we have clearly identified as a need, and one we must emphasize. Our coaches certainly bought into this notion and we are now establishing guidelines and protocols for each of our sports to follow to ensure we fill our teams with quality individuals who also happen to be great athletes. From an athletic department perspective, we will also continually raise the bar in terms of what we will ask of our student-athletes, our coaches and all of us in athletic administration. All of this will be in an effort to position St. Lawrence College as one of the leaders in the OCAA and potentially the CCAA. 🏆

# SLC gets research boost

BY LAURA TULCHINSKY

**ST. LAWRENCE** College has been awarded a Natural Sciences and Engineering Research Council of Canada (NSERC) grant of \$2.3M over 5 years. With the grant, the college will create a Sustainable Energy Applied Research Centre, which will draw upon faculty expertise in the college’s Energy Systems Engineering Technology Program, as well as Wind Turbine Technology, Civil Engineering, Instrumentation Control Engineering, and other programs, and will involve students.

The NSERC award adds significant momentum to the college’s steadily growing applied research activity. Last year Ontario committed \$10 million to expand the Colleges Ontario Network for Industry Innovation (CONII). St. Lawrence College has joined CONII, doubling the needed resources for applied research such as faculty time and student assistants for the next two years.

Other ongoing applied research projects at St. Lawrence College include: **Community Services:** “CEBRIC”, a child behavior research/treatment clinic concept, which draws on several Community Services programs, has performed a needs assessment, a literature review, and recently strategic development in partnership with a local social service agency. Future prospects include a fully functioning, model research and treatment centre.

**Computer Programming Analyst:** “Effective Formative Feedback” is piloting a tool which can serve a variety of post-secondary technical courses, addressing a common student need for helpful yet efficient feedback on progress prior to tests. Future prospects include further trials at other colleges and in industrial training.

**Business:** “Tourism Venue Rating Tool” for guests to hotels, museums, or amusement sites. Future prospects include a wider, industry-supported pilot. The tool is a comprehensive

score card for tourism venue operators to identify staff training and property development needs.

**Nursing:** “Variations of thromboelastography and platelet aggregation in relation to menstrual patterns in women”. The research addresses certain blood disorders with an eye to low-cost, low-intervention treatment, or management of conditions, for certain patients.

These ‘seed’ projects all involve paid student-assistants and they all point toward positive impacts upon college programming, regional industry, and better living.

The college’s growing applied research agenda fits a national trend. College programs are helping their related industries to compete globally by solving problems and producing still more highly qualified graduates to staff industry and academic laboratories. 🌊



## GET FRESH!

Year one was a success for Nathan Putnam of Living Cities who partnered with St. Lawrence College to establish an urban garden on Kingston Campus. The garden runs from June to early November and provides fresh vegetables and fruit every week. Harvesting is underway, and plans are to return next Spring. Find out more about getting involved with the Living Cities Company, check out their website at [www.livingcities-company.ca](http://www.livingcities-company.ca) 🌊



# THE POWER OF COMPETITION

Are you up for the challenge? Richard Powers is asking students and alumni to raise \$10,000 for the athletics department and he’ll match it. Sharks, Schooners and Vikings show us your powers.

Go to [www.givetoslc.com/athletics](http://www.givetoslc.com/athletics) to make your gift and find out more.



St. Lawrence College

ATHLETICS



## Greeting the Grads

### CYW ALUMNI CHAPTER KEEPS IN TOUCH WITH STUDENTS

The Child and Youth Worker Alumni Chapter was on hand to greet the new graduating class at Convocation last June. President Lee Anne Campbell enjoyed spending a few pre-grad minutes with the class of 2010 taking pictures and sharing specially created CYW cookies. The pictures taken that day have been posted on our website for all to see! <http://slccywalumni.weebly.com>

After a quiet summer, we were back at it again, welcoming the incoming students. This time it was Jillian Manning, our VP of Programming attending CYW Orientation and spoke briefly about the Chapter.

At the time of this writing, we were preparing for a workshop on October 19 at the Alumni Fireside Room of Kingston campus with guest speaker, Jack Phelan, professor emeritus of the Bachelor of Child and Youth Worker Program at Grant MacEwan University in Edmonton and a passionate advocate for greater recognition of our field.

Other workshops are also being planned, covering a diverse group of topics, including youth gambling and gaming. Check our website to keep up on the latest, including a CYW Alumni social in November. 🍪

– submitted by Lee Anne Campbell

# Brockville Branch

## Made in the shade

THE Branch and its partners celebrated the opening of its new Alumni Pavilion on Tuesday July 20th. A project initiated by the branch – in partnership with SLC Foundation and SLC Contract Training – as a gift to the campus and the community, and dedicated to past and future graduates who continue to show their college spirit long after graduation!

The Branch acknowledges the following contributors for their generosity and commitment to this project:

- Brockville Home Hardware Building Centre
- Eastern Engineering
- 1,000 Islands Concrete
- 1,000 Islands Rentals
- Locke Truss
- Pre-Construction Training instructors Kevin Anthony & Brian Dejong
- Sydenham Design

### Special Thanks:

- The students of the 2010 Pre-Construction Training Program!
- All Brockville Alumni Branch members from 2000-2010 for giving their time and energy to St. Lawrence College and the community in which it exists.
- All sponsors & supporters of the annual Stand-up Comedy nights, 2004-2010. 🍪

## Join the Laughter

We are now planning our 6th annual Comedy Night & Silent Auction for the Student Emergency Fund for Spring 2011, and are in need of event sponsors and silent auction items. Last year we raised \$1,400.00 which brings our grand total to over \$6,000.00 in the last five years!

Please consider sponsoring our Spring event so we can bring more great comedy to SLC Brockville and help our students at the same time. Event Volunteers also required - includes FREE access to Comedy Night! Contact Branch President Keith Hare at 613-345-0660, x3126 or email [AlumniBranchB@sl.on.ca](mailto:AlumniBranchB@sl.on.ca) 🍪

## Reaching out

We are now members of the Greater Brockville Ad & Sales Club and the Brockville & District Chamber of Commerce. Look for us at the monthly Ad & Sales dinners or at the Chamber "Business after 5" events. You can also visit our web page or Find Us on Facebook to be the first to know about our events!

Web site: [www.stlawrencecollege.ca/alumni/brockville.htm](http://www.stlawrencecollege.ca/alumni/brockville.htm)

On Facebook: <http://www.facebook.com/BrockvilleAlumniBranch> 🍪

## A Tribute to Founders

### FINE ARTS CHAPTER

The Chapter marked the passing of two of our original four founding members this past year, Jean Noel and Kay Howard (the two other founding members are instructor Marg Grothier and Susan Tooker). To honour Jean and Kay's memory, we have included their work in the 3rd Annual Alumni Show at the Marianne Van Silfhout Gallery at SLC Brockville (Sept.24 to Oct.25). There was a brief tribute to both artists by Marg Grothier at the opening reception on Sept.30th.

Jean was very active on behalf of the Fine Arts Alumni, and recently documented the history of the St. Lawrence College Fine Arts Alumni, Brockville Chapter. There was a 'Toast to Henry' presentation at the opening, as Henry Vyfvinkle officially retires from teaching at SLC. Four of Henry's paintings were included in the show.

At our Annual General Meeting in August, the Fine Arts Alumni members discussed ways we could support the Gallery at the Brockville Campus, as well as expand our presence and exposure beyond the Brockville area, especially since many of our group are also members of other regional artist associations (e.g. TIFAA, Rideau Lakes FAA). We would also like to welcome more alumni members to the group, so please contact us at alumni@sl.on.ca to find out more.

The 2010/11 Executive elected at the AGM includes:

**President:** Guy Wales

**Treasurer:** Solange Leman

**Secretary:** Kathy Lavender

**Membership:** Marilyn White

**Marg Grothier:** College liaison

**Ann Crawford:** Exhibit Coordinator for Brockville Public Library and Brockville Arts Centre shows

**Diane Fisher:** Workshops 🍷

– submitted by Guy Wales

## Alumni Echoes



*Alumnus Shawn Geary of McCoy Tours and Associate Dean of Business John Conrad pose for a photo after Shawn's company, McCoy Tours, agreed to let business students 'pull' his bus as a prize for raising the most money for the Business Student Initiative Fund.*

### 1971

#### Claude Dufresne

Appraisal and Assessment – C

Claude has been retired since 2001

### 1974

#### Russell Doré

Business Administration – Marketing – C

During my last semester Julian Dullion asked this profound question; "Does anyone really want to graduate?" My answer is "Never!" College was the best time of my life and many of us never wanted it to end!

#### Nicole Thompson

Early Childhood Education – C

We had fabulous instructor by the name of Joan Findlay. She taught us also about life itself. We were a tight-knit class of about 12 girls. I also enjoyed the extracurricular activities such as badminton and ping pong competition as we played against different colleges.

### 1991

#### Lori Slik

Behavioural Science Technology – K

I currently sit on County Council for Prince Edward County as a councillor and I am running for mayor of Prince Edward County in the current election to be held on Oct. 25th. I have been married for 16 years and I have three children Nathan, Ethan and Hallawell. We reside in the beautiful Prince Edward County.

### 1998

#### Shawn Bauder

Graphic Design – K

Currently made the move to New York City from Toronto. It has been a good opportunity to take at this point in my career, as I am able to give creative direction on a number of brands including FusionBeauty Colorceuticals and CLEAN Fragrance.

### 1999

#### Amy Hunt

Child and Youth Worker – B

After all the times I said I wasn't going to work with money I can no longer use my famous term "just let it go." Amy is with RBC Dominion Securities in Brockville.

### 2003

#### Kyle Hussey

Business Administration – Marketing – K

Since my leaving at St Lawrence I have had wide array of titles in different organizations. I have moved around the province working in different areas of the waste industry, I have been building waste and recycling programs in industries as well as municipalities. In 2008 I decided to branch out on my own and start a waste company with my father which has sky rocketed to where it is today. Our company deals with end users and processors of recyclables in five different countries and I am proud to say that our company has diverted approx. 10 million pounds of waste from Landfill since our start in 2008. My three years at St. Lawrence helped build the foundation to advance my career in what I love to do.

### 2006

#### Christopher Misztal

Computer Networking and Technical Support – K

Attended CN&TS, graduated in 2006 and deployed to Afghanistan in 2007 with Roto 4. Returned home and was awarded a Mention in Dispatches by the Chief of Defense Staff, on behalf of the Queen. Work full-time with the Canadian Forces as a Communications and Network Specialist.

## Alumni Echoes

### **Peter Desrosiers**

Social Service Worker – C

I loved my time at St. Lawrence College in Cornwall. I always felt that I was more than just a number. The teachers were very knowledgeable in their fields, and taught the latest techniques used in the workplace.

### **2007**

#### **Melissa Dobma**

Veterinary Technology – K

My time at SLC prepared me for the world outside of school. Now I have a rewarding career!

### **2009**

#### **Courtney Laws**

Graphic Design

I would recommend anyone to come to SLC, as Kingston is such a great city and the school is very nice. I had a great time there, I had a great learning experience with the variety of teaching methods within my program. My teachers were awesome and gave me a fountain of knowledge that I use in my own work. I made a lot of friends, some of whom are like family. I miss going to school, and seeing all those friends of mine, and creating amazing pieces with really creative projects.

#### **Tammy Ridge**

Practical Nursing – C

I had a wonderful experience at St. Lawrence College Cornwall Campus. I felt that I was more than just a number. The Professors really do care if you put forth an effort. I graduated with distinction and the RPNAO award of excellence that I was nominated for by my professors. I was able to get a job right after graduation due to the knowledge and experience that I obtained from the college. I would recommend the college to anyone that asks.

#### **Jennifer Gagnier**

Veterinary Assistant – K

First you dream it then you live it, truer words were never spoken to me before I attended St. Lawrence. They gave me both, the confidence and the knowledge to succeed, and now I have my dream job: Helping animals and people on a daily basis.

## Passings



**Kristal Giesebrecht** (Medical Laboratory Technician, 2000) PETAWAWA, Ont. — Hundreds of friends, family and comrades turned out in suffocating heat on Tuesday, July 6 at CFB Petawawa to remember Master Cpl. Kristal Giesebrecht.

The 34-year-old medic died June 26 in Kandahar province while on her second tour of duty in Afghanistan.

Giesebrecht was described as a person who loved life and cared about everyone around her. A native of Wallaceburg, Ont., and graduate of St. Lawrence College, Giesebrecht joined the Canadian Forces shortly after marrying her husband, Matt, in 2001.

Matt Giesebrecht called her his true soulmate. "I too believe that our souls will meet again and I promise that you will never be forgotten," he told mourners Tuesday.

Her commanding officer, Lt. Col. Richard Poirier, said he could not remember a day when she was not smiling. "Kristal made a lasting impression on everyone she met and you wanted to become her friend," Poirier said. (*Excerpted: The Canadian Press*)

#### **Katherine (Kay) Howard** (Fine Arts 1982)

— At the Brockville General Hospital on July 30, 2010. Katherine (Kay) Reid Howard (nee Taylor), wife for 65 years of Ranald (Ran) Howard, and dear mother of Bonnie Warner and George Howard (Anne Marie). Kay was a local artist who loved to paint in the St. Lawrence area and was one of the founding members of the Fine Arts Alumni Chapter. An open house to celebrate Kay's life was to be held in mid October.

**Jean Noel** (Fine Arts 1983, member and Voyageur correspondent Fine Art Alumni Chapter) — Jean Noel, artist, SLC alumna, and active member of the Fine Arts Alumni Chapter, passed away Wednesday June 16, 2010 at the Brockville General Hospital, G.S.S. in her 73rd year. Beloved wife of Donald Noel of Lyn. Dear mother of David Noel, Richard Noel (Lisa), Todd Noel (Sheila) and Lisa Free (John). Sadly missed by her three grandchildren Sarah, James and Sophie, brother Robert Herbison and sister Flora Shepard. Predeceased by brother Raymond Herbison.

#### **Diane Owens** (Practical Nurse, 1983)

Diane Marie Owens, 53, of Toledo, died suddenly April 8 at Kingston General Hospital. She was born December 12, 1956, in Ottawa to William Castellano and the former Betty Tompkins. She studied nursing at St. Lawrence College in Brockville and graduated as a registered practical nurse. From December 21, 1981, she was employed as a nurse at Brockville Psychiatric Hospital. She also worked in treatment units at the Royal Health Care Group. Aside from her work, her main interests were reading, music and boating. Mrs. Owens is survived by her three children, Chandra Tyson and husband Paul of Beachburg, Kelti Owens and friend James Ward of Toledo, and Brian Owens of Toledo, as well as four grandchildren.

**Laurier Courville**, Former Board of Governors Chair – Peacefully at Heartwood Long Term Care, Cornwall, on Thursday, September 9, 2010. Wilfrid Laurier Courville of Cornwall; formerly of Alexandria; age 91 years. Retired City Hall employee of the City of Cornwall, Past Chairman and member of the Board of Governors of St. Lawrence College, founding member of the Club Richelieu, Cornwall, founding member of the Cornwall Historical and Genealogical Society, published author of the Aubé Family Genealogy and was active in many area choirs as director and member for more than 40 years. Beloved husband of Bernadette Courville (nee Aubé) and loving father of Francine Courville of Ottawa.

## Passings

**Anne Marie Levesque**, Former Board of Governors member – Peacefully with her family at her side at Hospice Cornwall on Wednesday, July 7, 2010. She was 62. She leaves her loving husband Claude Delorme and two sons, Mark and Guy Delorme. Survived by one sister Huguette Marleau (Yves) of Hamilton's Island, Summerstown, and two brothers, Louis Pierre Levesque (Francine) of Boucherville, QC and Michel (Mike) Levesque (Lucie) of Cornwall.

### **Charlene M. Curleyhead**

Charlene M. Curleyhead, 67, of 20 James Lane, unexpectedly passed away on Wednesday, August 11, 2010 at Cornwall Community Hospital. Charlene was born June 30, 1943 in Cornwall, Ontario, the daughter of Jonas White and Genevieve Leaf Tarbell. She attended schools on Cornwall Island and St. Andrew's Convent School. She later graduated from St. Lawrence College in 1993. On April 25, 1964, she married Alfred "Freddie" Curleyhead at St. Regis Catholic Church. He predeceased her on February 10, 2001. Charlene taught the Mohawk language with her good friend, Yvonne Chubb, at Twin Rivers Elementary School for seven years. She also was a bartender at various bars around Akwesasne, worked at the Traveling College on Cornwall Island, and was a home support worker for Mohawk Council of Akwesasne for 17 years. Most recently, she was providing medical transport to various community members.

*Passings entries are assembled from area publications and submissions from alumni families. 🚩*



## **GET THE CARD, GET GOOD STUFF!**

**Did you know? You can present your SLC Alumni card and be eligible for great rewards like these:**

### **CHEAP Movie Tickets!**

Movie tickets from Cineplex Odeon, Famous Players, AMC, Empire Theatres

### **CHEAP Sports!**

Raptors, Blue Jays, Toronto FC

### **CHEAP Attractions!**

CN Tower, Great Wolf Lodge, West Edmonton Mall, Toronto City Pass

### **CHEAP Accommodations!**

Edmonton, Calgary, Montreal, Niagara Falls, Toronto

### **CHEAP Services!**

Home, auto and life insurance, car rentals, CAA memberships, Travel discounts

## **DON'T HAVE A CARD?**

**Email us at [alumni@sl.on.ca](mailto:alumni@sl.on.ca) or check out [www.stlawrencecollege.ca/alumni/discounts.htm](http://www.stlawrencecollege.ca/alumni/discounts.htm)**



## Ready for his Close-Up

**Photographer Bernard Clarke on soaking up knowledge and getting through airports.**

**You've been a photographer running your own business for 23 years. Was this your plan when you graduated?**

The first 2 years were in Toronto and the rest I have been based in Kingston. Yes, this is what I have wanted to do since I entered the Fine Arts Program at SLC.

**Your work runs the gamut – from corporate portraits to photographic art. What is your favourite kind of assignment?**

I have always enjoyed photographing

personalities – people who have excelled in their fields. It's usually magazines that give me the opportunity to do this. I'm a huge magazine lover so it's satisfying to see my work in the pages.

**What advice have you received that has stuck with you the most, and who gave it to you?**

My dad's advice has been to always work hard, and if it sounds too good to be true then it likely is. My parents have always encouraged me and my mom always collected my magazine spreads up to her death.

**What subject did you wish you paid more attention to when you were in College?**

This may sound odd but I tried to pay attention to every subject & teacher I had

in college. My years in the Fine Arts Program were ones of soaking up as much knowledge as possible. I wish I had more business experience before I started mine, but you learn as you go along.

**You travel a lot for your work. What's your best piece of getting-through-airports advice?**

Airports and travel aren't as much fun as they used to be. Flights never seem to run on time so I try to make sure that my connecting flight isn't too tight. My other advice is if you are based in the Kingston area and flying to the States, fly out of Syracuse Airport. The cost is much less and the drive down is nice unless it's the winter months.



NAME: \_\_\_\_\_ PROGRAM: \_\_\_\_\_  
YEAR OF GRADUATION: \_\_\_\_\_ CAMPUS: \_\_\_\_\_  
STUDENT NUMBER (IF KNOWN): \_\_\_\_\_ HOME PHONE: \_\_\_\_\_  
TELEPHONE: \_\_\_\_\_ EXT. \_\_\_\_\_ EMAIL: \_\_\_\_\_  
HOME ADDRESS: \_\_\_\_\_ CITY: \_\_\_\_\_  
\_\_\_\_\_ PROV: \_\_\_\_\_ POSTAL CODE: \_\_\_\_\_

**→ A. I WOULD LIKE TO SHOW MY SUPPORT BY:**

- Ensuring the accessibility of a St. Lawrence College education by supporting the endowed student bursaries in:
  - Kingston  Cornwall  Brockville  College-wide
- Providing St. Lawrence College with the ability to meet its most pressing needs
- Directing my gift to an area of personal interest: \_\_\_\_\_

**→ B. MAKING MY GIFT IS EASY:**

**Monthly Pledge:** I prefer to make my gift in monthly payments by

- Credit Card (complete information below)  Post-dated cheques (payable to St. Lawrence College)

Monthly gifts of \$ \_\_\_\_\_ Start Date (month/year) \_\_\_\_\_ End Date (month/year) \_\_\_\_\_

**Annual Gift:** I prefer to make a single gift of: \$ \_\_\_\_\_ by:

- Credit Card (complete information below)  Cheque (payable to St. Lawrence College)

**CREDIT CARD INFORMATION:**  Visa  MasterCard

Card No: \_\_\_\_\_ Expiry date: \_\_\_\_\_

**→ C. OTHER:**

- Please have someone from the College's Foundation Office contact me regarding planned giving options (gifts through a bequest or insurance).
- I have made a provision for St. Lawrence College in my will.
- I wish to have my contribution remain anonymous.
- I am interested in volunteer opportunities with St. Lawrence College.

Signature: \_\_\_\_\_

Please use the postage-paid envelope enclosed or return to:

St. Lawrence College, Room 02000, 100 Portsmouth Avenue, Kingston, ON K7L 5A6

Charitable Tax Receipts will be issued by the College.

**THANK YOU FOR YOUR SUPPORT!**

# Insurance as simple as 1 · 2 · 3



## ► for members of the St. Lawrence College Alumni

Insurance doesn't need to be complicated. As a member of the **St. Lawrence College Alumni**, you deserve – and receive – special care when you deal with TD Insurance Meloche Monnex.

First, you enjoy savings through preferred group rates.

Second, you benefit from great coverage and you get the flexibility to choose the level of protection that suits your needs.<sup>1</sup>

Third, you receive outstanding service.

At TD Insurance Meloche Monnex our goal is to make insurance easy for you to understand, so you can choose your coverage with confidence. After all, we've been doing it for 60 years!

Request a quote  
and you could



Insurance program supported by



# 1 866 352 6187

Monday to Friday, 8 a.m. to 8 p.m.

[www.melochemonnex.com/slalumni](http://www.melochemonnex.com/slalumni)



**TD Insurance Meloche Monnex is the trade name of SECURITY NATIONAL INSURANCE COMPANY which also underwrites the home and auto insurance program. The program is distributed by Meloche Monnex Insurance and Financial Services Inc. in Quebec and by Meloche Monnex Financial Services Inc. in the rest of Canada.**

Due to provincial legislation, our auto insurance program is not offered in British Columbia, Manitoba or Saskatchewan.

<sup>1</sup> Certain conditions and restrictions may apply.

\* No purchase required. Contest ends on January 14, 2011. Total value of each prize is \$30,000 which includes the Honda Insight EX (excluding applicable taxes, preparation and transportation fees) and a \$3,000 gas voucher. Odds of winning depend on the number of eligible entries received. Skill-testing question required. Contest organized jointly with Primum Insurance Company and open to members, employees and other eligible people of all employer and professional and alumni groups who have an agreement with and are entitled to group rates from the organizers. Complete contest rules and eligibility information available at [www.melochemonnex.com](http://www.melochemonnex.com). Actual prize may differ from picture shown.

Honda is a trade-mark of Honda Canada Inc., who is not a participant in or a sponsor of this promotion.

Meloche Monnex is a trade-mark of Meloche Monnex Inc., used under license.

TD Insurance is a trade-mark of The Toronto-Dominion Bank, used under license.