



St. Lawrence College

voyageur

The Magazine for Alumni
& Friends of St. Lawrence
College

WINTER 2013

The Passion Principle

Our Premier's Awards nominees follow the paths to passion



Decades of Dedication

Kingston Nursing marks 40 years

Report to Donors

We couldn't do it without you

St. Lawrence College Part-Time Studies

Courses for everyone,
for career upgrading or
personal interest

For complete course listings:
www.stlawrencecollege.ca
and click on Part-Time

Register online or call:
toll-free 1-866-276-6601



St. Lawrence
College



St. Lawrence College

voyageur

The Magazine for Alumni
& Friends of St. Lawrence
College

Alumni Relations Mission

The Alumni Relations office exists to encourage positive engagement with our alumni, through lifelong, mutually beneficial relationships.

How to reach us:

St. Lawrence College Alumni Office, 100 Portsmouth Avenue, Kingston, ON K7L 5A6

Phone from:

Kingston (613) 544-5400, ext. 1635

Brockville (613) 345-0660, ext. 1635

Cornwall (613) 933-6080, ext. 1635

North America (800) 228-4664

Fax: (613) 545-3932 **Email:** alumni@sl.on.ca **Web site:** www.stlawrencecollege.ca/alumni

St. Lawrence College's Voyageur magazine is published bi-annually through the St. Lawrence College Alumni Relations Office and is distributed to 50,000 alumni and friends of the College. Contributions of articles and photos about or of interest to our alumni, as well as signed letters to the Editor, are welcomed and are published at the discretion of the Editor. To have your name added to our distribution list or to reserve advertising space in Voyageur, please contact the Alumni Relations Office. Ad rates are available upon request.

The views expressed in the editorials, articles, and advertisements in Voyageur are not necessarily those of St. Lawrence College, the St. Lawrence College Foundation, or the St. Lawrence College Alumni Association.

If you would like to have your name removed from the Voyageur distribution list, please send a letter to that effect, along with a completed Alumni Record Form, to the St. Lawrence College Alumni Relations Office.

Reproduction of Voyageur, in whole or in part, is forbidden without the expressed written consent of the Editor.

PUBLISHING SCHEDULE:

Issue	Copy/Ads Due	Distribution
Winter	October 1	December
Summer	May 1	July

RATES AND TERMS

Rates and specifications are available on request. Full payment is due at time of publishing. Applicable taxes will be applied to all orders.

AD REQUIREMENTS

Voyageur magazine is produced using Adobe CS5 for the Mac.

Preferred format: Mac compatible PDF or EPS files, with "type converted to curves", accompanied by colour hard-copy proof.

PHOTO AND TEXT REQUIREMENTS

When supplying photographs for reproduction in Voyageur, we accept professional quality colour prints or 300dpi TIFF or hi-res JPEG files. Text is preferred in 12-point Times Roman with no indents or highlighting.

Canada Post Publications Mail Agreement #40010391

Return undeliverable Canadian addresses to:

Alumni Relations of St. Lawrence College
100 Portsmouth Avenue, Kingston, ON K7L 5A6
Email: returnedmail@sl.on.ca



On the cover

Mike Jablonicky is just one of our Premier's Award nominees. Meet them all in our cover story: The Passion Principle

Photo: Bernard Clark. Cover Story p 6

On the inside

Alumni News	5
The Passion Principle.....	6
Nursing Turns 40	10
Report to Donors.....	13
Echoes & Passings.....	26
Alumni @ Work	30

Editor: Janine Foster

Design: Heidi Wallace

Printing: McLaren Press Graphics

Contributors:

Kevin Biggs
Dick Tindal
Khadijah Vakily
Denise Wing

Photography:

Kevin Biggs
Bernard Clark
Jacquie Cartwright
Emilio Ciccarelli
Tammy Larin
Jack Tennant

St. Lawrence College gets a new President for the New Year



Glenn Vollebregt
President and CEO, effective January 1, 2013.

After an extensive national search, the Board of Governors of St. Lawrence College announced on December 12 that the College's own Glenn Vollebregt, currently Senior Vice President of Finance and Administration, has been appointed the new President and CEO, effective January 1, 2013.

With 12 years of dedicated service on the College's Executive Team, Glenn brings a broad range of senior administrative experience, a proven financial background and a deep passion for student success to this leadership role. Glenn holds a Master of Science in Public Policy and Management from the University of London, UK, a Certified Management Accountant (CMA) designation from the Society of Management Accountants of Ontario and a Business Accounting Diploma from Georgian College.

"The Board of Governors is excited that Glenn will bring his visionary leadership, sound judgment and dedication to lifelong learning to his new role as President and CEO," said Paul Fitzpatrick, Chair, St. Lawrence College Board of Governors.

"Glenn's extensive experience in all areas of the College, his creativity and leadership will ensure that the College continues to meet the learning needs of students and our communities."

During his tenure as Senior Vice President of Finance and Administration, Glenn's strong financial leadership and student focus has enabled the College to invest in its core business – students, and their success.

During Glenn's tenure, St. Lawrence College has experienced strong enrollment growth, with the student population nearly doubling in the last decade. The College has also consistently ranked among the top three colleges in Ontario for graduate employment and employer satisfaction with our graduates.

Glenn is a strong community advocate through active involvement in numerous high-profile board appointments including Sustainable Kingston, the Ontario Education Collaborative Marketplace and as a past member of the Kingston Economic Development Corporation (KEDCO) Economic Round Table Committee.

"I am honoured to have the opportunity to lead this great academic institution and continue to work with the hundreds of dedicated staff at the College," said Vollebregt. "I am excited about the future of St. Lawrence College and look forward to continuing to provide leadership, focusing on student success and academic excellence."

Glenn is one of only a handful of SLC presidents in our 45 year history who has graduated from an Ontario college. He replaces Interim President and CEO Gordon C. MacDougall, who was the first in the position to be an SLC alumnus, and with Glenn's appointment, will return to his position as Senior Vice President, Advancement, Student and External Affairs.

Editor's Note: Watch for the Summer 2013 edition of Voyageur for an interview with President and CEO Glenn Vollebregt

Alumni on Ice?

Mark your calendar for the SLC Sharks Alumni Hockey Weekend

by Kevin Biggs

St. Lawrence College is proud to announce that the Cornwall Sharks men's and women's hockey teams will be hosting an inaugural Alumni Hockey Weekend Tournament that will feature over 150 current and past Sharks hockey players in a two day event, from Friday April 5th to Saturday April 6th.

Invitations will be sent to current and former players in January with the assistance from St. Lawrence College Alumni Relations and the Sharks coaching staff (Sean Boulerice and Michael Pettinella). The tournament will feature a player's lounge (Shark Tank) where all players will have the opportunity to socialize, share stories, and take part in a silent auction where old Sharks memorabilia will be auctioned off.

"This is a great opportunity for St. Lawrence College Athletics to enhance the relationship with our alumni student-athletes" says Athletic Director Herb Steacy. "We have held similar small scale

events with our rugby and soccer teams, but to see it happening on a large scale at the Cornwall campus is very exciting. Sean and Mike (head coaches) have done a fantastic job with the Sharks hockey program, without their efforts an event like this wouldn't be possible."

"I have spoken with many of the alumni from the hockey program about this event and there is a lot of buzz out there surrounding the April 5th-6th weekend" says Sean Boulerice, of the Sharks head coaches. "We keep in constant contact with our former players, and after hearing from them about wanting to come back and be a part of the team, we felt putting together a two day tournament would be the best way to get even more players involved."

Organizers are inviting ALL Cornwall hockey alumni to come out for the event – including Roadrunners (the forerunners to the Sharks). "Hockey has long been a big part of the Cornwall campus history and

we'd love to see Roadrunners and Sharks come together to celebrate and renew old friendships," says Janine Foster, Manager of Alumni Relations & Annual Giving.

Once players have registered, a formal schedule will be released in the New Year. A 'Meet 'n Greet' will be held on Friday April 5th at the College where registrants will pick up their 'swag bag' commemorating the event. Games will be happening on Saturday April 6th at the brand new Benson Centre in Cornwall with an ice-view hospitality suite open all day. The event ends with a Pub Night at the campus Shark Tank on the Saturday evening.

To make sure you're on the guest list and receive the latest updates, update your alumni record at www.slcalumni.com/ update or call the Alumni Office at 1-800-228-4664 and don't forget to let us know you're a Shark or Roadrunner alumni.



It's the click that counts



Show your support of SLC and make your gift online at

www.givetosl.com

It's easy
It's fast
It's a great way to support our students

Make your gift online today and start making a difference at SLC



The Passion Principle

Our nominees for the 2012 Premier's Awards have one thing in common: their career paths led them to discover their passions - by Janine Foster

Terri McDade spent 22 years on the front lines of working with young people, one at a time. Now she's responsible for empowering thousands of others to do the same. Kevin Lalonde went from the retail floor to the jet set world of international retail consulting, while preaching the old-fashioned value of 'happy employees makes happy customers' even in Saudi Arabia. Ian Rowberry has always taken the path less travelled, but in his short journey since graduating in 2010, he's found a cause worthy of his eco-evangelism: making solar energy available to low income families. Mike Jablonicky left the security of the known, for the excitement of being a groundbreaker in wind energy. And finally, Kevin House found that his success owes much to honoring his roots in sketching and drawing - the place where he started.

Their journeys may have all begun when they left the convocation ceremonies on Brockville, Cornwall and Kingston campuses, but they converged when each were nominated to represent St. Lawrence College at the 2012 Premier's Awards - an annual awards ceremony created to recognize the tremendous contribution Ontario's college graduates make to the success of our province.

"We're immensely proud of all our nominees," says Gordon C. MacDougall, Interim President and CEO of St. Lawrence College. "We have over 75,000 graduates of the College that make important contributions to their fields and communities locally and globally. We are pleased to recognize just a few of them at this year's Premier's Awards."

Terri McDade

Dean of Arts, SLC
Child and Youth Worker - Brockville
Class of 1979

Terri McDade may be the Dean of Arts at St. Lawrence College, but she is first and foremost a Child and Youth Worker, which informs the way she approaches her professional and her community work. She has never stopped being someone who has a passion for helping young people reach their full potential - especially those marginalized by any number of issues. For 22 years she worked on the front lines, first with emotionally disturbed youth at a residential treatment

facility, and then as an adolescent care worker in four area high schools. When she took her first role as a full time instructor at SLC, it was to contribute to the next generation of CYWs. She had no idea that only eight years later, she'd be the Dean, and a leading driver on some of the College's most important initiatives.

Terri is a skilled matchmaker who spends a good portion of her time matching people in need with people who can help. Whether its teacher/student, agency/volunteers or matching resources to a community, Terri doesn't see them as her achievement - it's everyone's. But there's no denying that when a student group developed a financial literacy program for their fellow college students, Terri saw an opportunity to connect them with the local Children's Aid Society to deliver this financial literacy program to Crown Wards in the Kingston area. The project is now acting as a blueprint for other jurisdictions. It's just a small example, but it explains why Terri is SLC's go-to resource to chair committees as diverse as Academic Policy, Space Planning, and the College Management Committee. She's recognized not only for her effective leadership, but for her strong interpersonal skills gained through years of counselling experience that ensures voices are heard, but that the focus never leaves our students.

"Everyone has a story that they want someone to listen to," says Terri. In 22 years as a Child and Youth Worker prior to entering teaching full-time, she listened to a lot of stories. Today, as a top-flight administrator, she uses that skill to build consensus, create opportunities, and never forgets that every decision she makes as Dean of the Faculty of Arts, must have the best interests of students at heart. "The skills I learned, I still use every day," she says.

Not only has her background as a CYW made her a natural choice to head up the College's many outreach programs - to Crown Wards, Aboriginal, First Generation and, recently, the Pathways to Education initiative for economically disadvantaged youth - but her ability to counsel and collaborate has proved effective in managing a large and diverse portfolio of responsibilities.

Terri has been a tireless advocate for Child and Youth Workers and a longstand-

ing member of the provincial association, the OACYC, serving as its president 2007-2009. She is the co-author of a program to educate young people on how to prevent youth suicide, and has mentored numerous former clients and students who have gone on to share her passion for youth advocacy. Her volunteer work for over a decade with the Children's Aid Society - eventually becoming the Eastern Region representative for the provincial association of Children's Aid Societies - has brought a rare 'front line' perspective to an important provincial board. In her educational career - first as instructor, then coordinator, associate dean and finally, dean, she has continued to blaze a trail for CYWs to emulate.

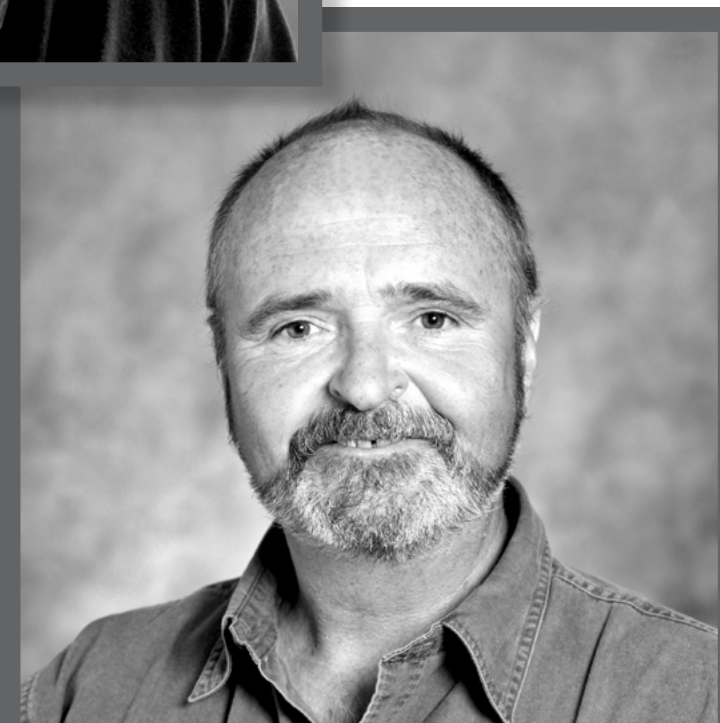
Michael Jablonicky

Operations Supervisor,
Wolfe Island Wind Farm
Construction/Electrical Maintenance
Program - Kingston
Class of 1989

Mike Jablonicky is at the forefront of the Wind Energy business, successfully - and simultaneously - overseeing the start-up of two of the province's biggest wind farms, and was the first person in the province from the sector to work with the Independent Energy Systems Operators, representing the province's first commercial wind farms. He got his feet wet in the business when he left a well-paying secure position as an industrial electrician to join a small start-up company bidding on the province's first commercial wind farm: Melancthon 1. His success there led to joining the company - now TransAlta - where he oversaw the installation of both Wolfe Island and Melancthon2. He has stayed on at Wolfe Island, and is credited as not only the first person in the province to run a modern wind farm with in-house maintenance, but to garner global attention as one of the best-run wind farms in the world. Mike Jablonicky received his electrician's 'ticket' at St. Lawrence College, but his time at the College did more than just give him a licence to work in his field. While he had a successful career as an industrial electrician in both the printing and automotive sectors, he credits his time at the College with expos-



Clockwise from top left: Ian Rowberry, Terri McDade, Mike Jablonicky, Kevin Lalonde, and (centre) Kevin House



ing him to the wide variety of applications for his work – which would eventually lead him to the bold move in 2005 of leaving the industrial sector for the burgeoning field of Wind Energy. While the tools of an electrician’s trade were a part of his learning, he credits what he calls the ‘subconscious learning’ of meeting deadlines, handling stress, and working with people as the skills he uses most today. In fact, as lead spokesperson and ‘go to’ man for the Wolfe Island Wind Farm, a good portion of his work is in managing the public relations of what he affectionately calls ‘The Farm’.

As the lead electrician for the Province’s first commercial wind farm (Melancton 1, near Shelbourne, Ontario), Mike was at the ground floor as a brand new industry was being built. The negotiations and sharing of information between his office and provincial oversight bodies set in place the baseline for some of the first protocols between commercial operators and Independent Energy Systems Operators – protocols still in use today.

Beyond his technical skills, he has also played an important role in increasing the understanding of the industry, choosing to move to Wolfe Island as a permanent resident at a time when the introduction of the 86 turbines was at its most contentious. He believed that people needed a person on the ground to talk to and express their concerns, and five years after moving to the island, he has played host to local, national and international guests who wish to learn more about the business.

Mike is most proud of something he helped instigate: The Mike Jablonicky/Transalta Wind Facility Scholarship at St. Lawrence College. It started with a simple act that speaks volumes of the man: he decided to donate all of the proceeds he received from the College to teach a part-time course to Wind Technician students (at the classroom he had included in the design of the Wolfe Island site). What he didn’t know is that TransAlta, upon hearing of his generosity, decided to match his gift. The now-endowed fund will support future students of wind technology. He considers the opportunity to teach students who “will be the ones to take wind energy to the next level” his most satisfying reward.

Kevin Lalonde

President, Accelerate International
Business Administration – Marketing –
Cornwall
Class of 1983

Kevin Lalonde is a global retail and sales executive with a track record of turning under-performing brands around. In 2007 as the COO of eXtra in Saudi Arabia (an electronics retailer) he lead employees to turn around its non-profitable business – resulting in becoming the #1 fastest growing retailer and among the top 25 fastest growing companies in Saudi Arabia in 2009 and 2010. He also created a positive work environment for employees, with eXtra recognized as the “Best Saudi Company to Work For” in 2012. He took another of his clients – Thai Indochine Trading Company – and developed and deployed a five year business plan that doubled revenues by expanding distribution of products into Canada with national retailers, such as Wal-Mart and Loblaws (both former employers). Kevin moved from the supply side with Procter & Gamble upon graduating from SLC, to working for the country’s largest consumer products retailers, before striking out on his own in the global retail marketplace.

Kevin credits his Business Administration – Marketing program for the broad base of skills he now calls upon in his work. While the emphasis on marketing has definitely played a role in his consulting work and in his early career in sales with Pitney Bowes, Procter & Gamble and Wal-Mart, being a grad of the Business Administration program also exposed him to the accounting and process management that have become key to his work as a ‘business builder’, leading companies to business transformation. His focus on strategy, structure, and process and procedures are part of his competitive advantage. While other consulting firms propose strategy, Kevin and his associates at Accelerate also implement it –immersing themselves in their clients’ business, and taking executive responsibility to implement change. In many ways, it mirrors the College’s approach to applied education. It’s not enough to know the theory behind business, but you also have to put it into action.

Kevin Lalonde’s innovations throughout his career have had major impact not only on his employers/clients, but on business processes globally. He consolidated the disparate services of Bell Canada into a one-stop-shop for retail customers. His simple innovation to print bar codes on the paper hearts donors signed when making a gift to Sick Kids at Loblaws, increased donations from \$2,500 to \$250,000. That barcode is now industry standard in cause-related marketing. His exposure and experience with marketing to Canada’s multicultural community has easily transferred to his global business – most notably in the Middle East. And his ability to connect his Canadian contacts to his Middle Eastern clients has seen mutual growth in markets and expertise.

Kevin House

Owner, Kevin Creative
Visual and Creative Arts –
Graphic Design – Kingston
Class of 1991

Canada may have mourned the loss of its horse in the 2012 Belmont Stakes, but we still had a Canadian presence at the course – the design of St. Lawrence College grad Kevin House.

Kevin’s work – including the logo for the 144th running of the Belmont Stakes – includes illustrations for major U.S. magazines such as MotorTrend, logos for the Vancouver Winter Olympics bid package, and major retailers and corporations on both sides of the border. His secret weapon? A pencil. In a time of digital everything, Kevin House is a design craftsman who engages his clients in the process of creating memorable identities – through sketchbook and pencil from his Victoria BC studio.

Going out on his own after many years with some of western Canada’s most respected agencies, Kevin is known for what he calls ‘visual explorations’ – many pages of concept drawings that help clients visualize their end product before committing to the industry-standard digital tools. Often called an “illustrative designer”, Kevin brings an illustrator’s eye to his design work, and a designer’s eye to his illustrations. “My illustration style could be described as a combination of clean line and design-influenced imagery with one foot firmly placed in the elegance of the past, often with a dash of humour. I almost always will have a type component in my work. I work digitally in Adobe Illustrator which allows me to create rich and colourful pieces that are small in file size yet infinitely scalable, which appeals to my practical design side.”

Kevin credits his time at SLC ‘before the digital explosion’ with giving him the solid skills that would transfer to any medium. One of his early instructors – and mentors – was an illustrator, and he, along with other classmates, formed an Illustrators Society to dedicate time to an art form that makes up a distinct minority in the graphics business. He found the rigor of the program – and the need to tackle challenges as you encounter them rather than procrastinate – stood him in good stead for his future career. And because SLC was a place that nurtured his special skill – referred to as ‘illustrative design’ – he had a foundation on which to combine his love of drawing with the principles of graphic design in the marketplace.

He may refer to it as ‘old school’, but Kevin puts the art in graphic arts. He

uses his drawing skills not just as a tool to be used to bring an idea to completion, but as an inclusive and accessible medium to bring clients along for the journey. His pencil sketches of a logo concept or editorial illustration engage the viewer to consider the many possibilities a concept can take. In that way, he fosters a deeper understanding between designer and client that makes the client feel part of and take ownership in the process. The result: a more harmonious and collaborative partnership. This process is not only appreciated by those in the non-design world, but by those within his industry who engage his company for illustration work. He is, in short, the illustrator that other designers hire.

Ian Rowberry

Sustainability Consultant,
current project: Solar Co-ops
Energy Systems Engineering
Technology (ESETT) - Kingston
Class of 2010


Ian Rowberry is passionate about sustainability. As a geography teacher in his native UK, he became increasingly concerned about the health of the planet, and when he moved to Canada and found his UK teaching credentials didn’t move with him, he switched gears to ‘walk his talk’ and embarked on a career as an eco-evangelist. He volunteered at the Ecology Action Centre in Halifax for four months before he could con-

vince them to hire him to manage their Steer Clear vehicle retirement program. And while a part of St. Lawrence College’s ESETT program, he founded and was the driving force behind CSI – the Campus Sustainability Initiative – a grassroots group of students, staff, faculty and suppliers, dedicated to improving the College’s environmental practices. His voluntarism and passion lead to his selection as a Garfield Weston Scholar – one of only 25 upper year college students selected in the country. Not only did he receive a full-ride scholarship while in his last year at the College, but the Garfield Weston Foundation also funded his project to give community seminars on achieving sustainability through personal choices.

While a student at SLC he joined the board of SWITCH – the local sustainability group – and through his activism and encouragement, more than quadrupled the number of student members. Upon graduation Ian was immediately hired as a solar designer for a Kingston alternative energy firm, and has remained active in community groups that reflect his values – including a community garden project, and a co-operative daycare initiative. He is currently at work investigating how the cooperative model could be used to fund energy alternatives for low-income Canadians.

“It has changed the way I look at my surroundings,” says Ian of the impact of his ESETT program. While others see buildings, Ian sees “energy dynamics”. “I see heat leaks and alternative energy opportunities. I

see the home not as a building, but as a system”. The ESETT program, with its grounding in traditional energy systems and its focus on alternative solutions, has given him the tools to realize his sustainability goals. He works easily with those in the traditional HVAC fields, while bringing his expertise in solar and other alternative energies to the table. The result? Accessible energy alternatives for his clients that don’t require a wholesale conversion to eco-activism, but is a first step in learning how to live in a way that has less impact on the planet.

For a grad of only two years, Ian’s contribution to the sector outweighs his relatively junior status. And that’s primarily because he bridges the role of the ‘professionals’ who sell and service systems, with the ‘activists’ who lobby for their use, while working with ordinary citizens to find their way to sustainability. His work with the student group, CSI, indirectly lead to the College’s first ever position that had responsibility for ensuring the institution’s sustainability. His education efforts with his solar clients helped them see other opportunities beyond a solar panel to make a difference in their community. Finally, while most of his industry is focused for the moment on converting large commercial developments, Ian’s work focuses on residential conversions. As with all things he does, he doesn’t see changing energy use as a one-time event. He wants to create a movement. 

What does your legacy look like?

The St. Lawrence College Foundation provides assistance to individuals considering a personal planned gift through bequest or life insurance. Personal or family named bursaries, scholarships and awards are among the numerous opportunities donors have to leave a legacy of education for others through St. Lawrence College.

For information on giving to The St. Lawrence College Foundation contact us:

The St. Lawrence College Foundation, St. Lawrence College

2288 Parkedale Avenue
Brockville, ON K6V 5X3

2 St. Lawrence Drive
Cornwall, ON K6H 4Z1

100 Portsmouth Avenue
Kingston, ON K7L 5A6

foundation@sl.on.ca, 1-800-228-4664 www.stlawrencecollege.ca/foundation

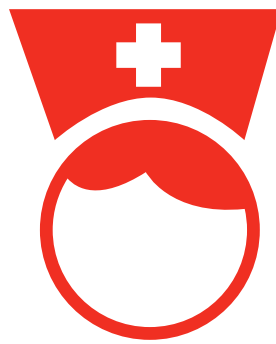
Registered Charitable Number 10802 7202 RR 001


**St. Lawrence
College**
FOUNDATION

Decades of Dedication

Kingston celebrates 40th anniversary of nursing education

by Khadijah Vakily



This May, St. Lawrence College will be hosting a recognition event to celebrate the anniversary of 40 years of nursing education at the College. The programs being celebrated by the College range from Practical Nursing and Bachelor of Science in Nursing, to now-defunct programs such as Diploma Nursing and Nursing Assistants. While it's a Kingston-based event, any living near the area are welcome to attend.

The event also coincides with the opening of a nursing exhibit on St. Lawrence College at the Health Care Museum of Kingston. The exhibit is part of an ongoing series by the museum highlighting contributions from major Kingston nursing educators in past years including Hotel Dieu, Kingston General Hospital and Queen's University. Prior to 1973, schools of nursing were located within hospitals until there was a push by the provincial government to move them to a college setting. Years later, there was a shift to require nurses to gain a university degree before being able to work in their respective fields. Colleges then began working with universities to create collaborative nursing programs, such as the current partnership between SLC and Laurentian University. According to Clare Rayner, Chair of the planning committee for Kingston Nursing Education (KNE), the event has been a project two years in the making. Plans so far include starting the celebration at Davies Hall on Kingston Campus, where there will be the showing of a video that gives an oral history of nursing at St. Lawrence – as told by alumni.

"We will have displays of class photographs, displays of past and present faculty members — and the thing that will pique a lot of alumni interest — tours of the nursing lab and the simulation lab," says Rayner. After these presentations, visitors will be transported to the museum exhibit by bus, where they will view more alumni interviews as well as memorabilia gathered from over the years.

Alumni are being encouraged to get in contact with Alumni Relations to send in any and all interesting memorabilia from their days at SLC.

Along with a reception, another element of the event will be the opportunity for

the alumni office to take additional contact information down from graduates. "(We're) going to have some sort of setup that afternoon at the college where people can plug in their data... that's really going to increase members within the alumni databank," says Rayner.

Graduates from as far back as 1975 are rallying their classmates and pumping up their enthusiasm for the event. This active involvement on the part of nursing alumni has been affectionately noted by Janine Foster, Manager of Alumni Relations and Annual Giving.

"Hardly a year goes by when I don't get two or three requests for a reunion," says Foster. "They're very close classes (who) still maintain ties with one another." While participation is no problem for these former students, nursing graduates still face a pressing issue in maintaining their relationship with SLC.

"Our biggest challenge with nursing alumni is name changes. If they've married or divorced or somehow (or) other changed their name after graduation it's very likely we've lost touch with them," says Foster, noting the difficulty in passing on information on College happenings and media.

A lost alumni database has been created online where graduates can look up their name, class and other information. If a name appears on the site, it means there is no current address or contact information recorded in the alumni database for that nurse. Anyone interested in ensuring they or a classmate is not missing from the database can visit the site at www.slcalumni.com/lostnurses.

For alumni looking to further participate in the event, a welcome step would be volunteering to be filmed for the video interviews that will play at the event. Rayner is actively seeking graduates to help compile an oral history as told by their stories on their time spent at the College and what they've been working on since graduation.

"If they have a particularly good anecdote or memory they want to make sure is shared about their year or experiences at SLC, they should definitely contact us," adds Foster.

Another way that graduates can get involved in making a difference is by contributing through the lost nurses site to the Nursing Student Initiative Fund. This relatively new fund has been created for student nurses to have learning opportunities they may not normally get due to the cost involved. These opportunities can range from international travel for clinical work, volunteering or other special activities.

"The students and faculty come up with the ideas, and the fund is there for them to take advantage of these opportunities," says Foster.

With all the many ways for nursing graduates to participate in supporting, promoting and commemorating the event, the KNE planning committee are very excited to be able to see their hard work come to fruition.

"We're just trying to make sure that as many of the alum know about it as possible, and we're ready to welcome them home," says Rayner.

Anyone interested in donating memorabilia or volunteering for an interview can contact Clare Rayner at crayner@sl.on.ca, or Janine Foster at Alumni Relations at jfoster@sl.on.ca. ☞

DID YOU KNOW?

Help us find our lost Nursing, Nursing Assistant, and Practical Nurse grads from the Kingston campus.

Go to:

www.slcalumni.com/lostnurses to look up your "lost" classmates and let us know where we can find them!

Running for Tyrone & Gary



Pre-Service firefighter grads pay tribute to their friend and mentor, and make a lasting impact on future students

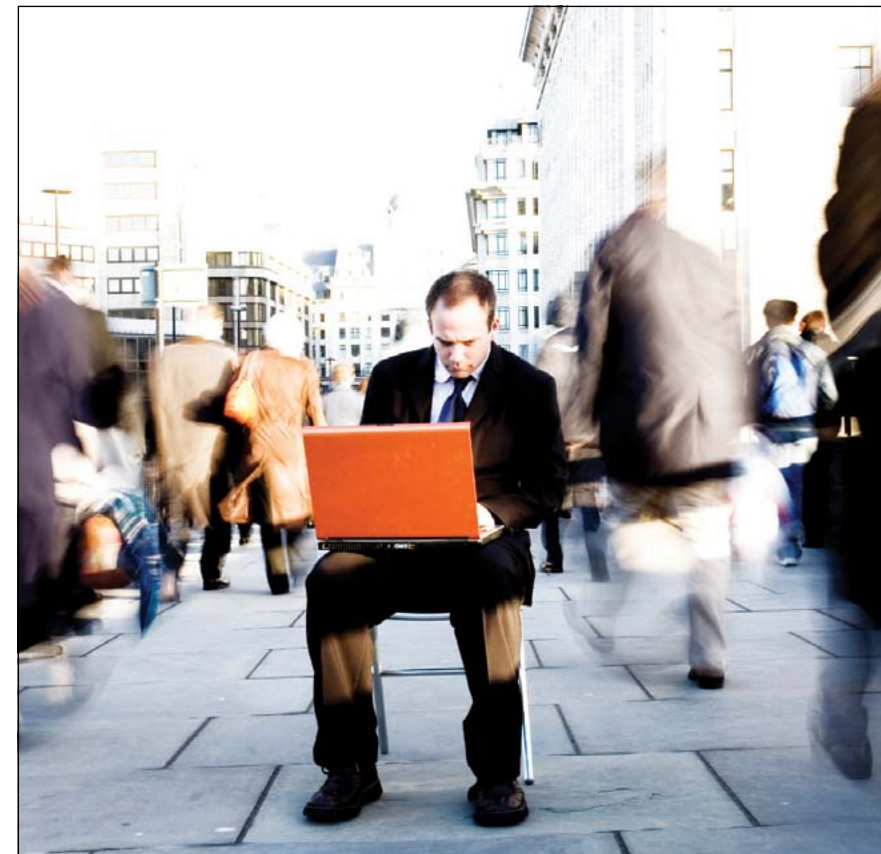
by Denise Wing

St. Lawrence College Pre-Service Firefighter alumni Shane Williams and Josh Mossimo are driven. For the last four years, they've organized a fundraiser in memory of their friend and classmate Tyrone Wilson (Pre-Service Firefighter 2009), but this year they worked extra hard. This year, they were honoring their friend and their mentor, Captain Gary Rutley, whose sudden passing only a year ago was within days of Gary's own participation in the 2011 edition.

"We started The Tyrone Wilson Memorial Run in memory of our friend and classmate, who died in 2009. Tyrone was a graduate of the Pre-Service Firefighter Education and Training program at St. Lawrence College and a firefighter with the Cardinal Fire Department. He was a good friend, a dedicated firefighter and someone committed to helping others," said Shane. "When our program coordinator Captain Gary Rutley suddenly passed away last October, we knew that we had to honour both men. Captain Rutley gave everything for his students... he was dedicated, compassionate and a role model for all, including Tyrone."

Their dedication paid off. Not only did they raise almost \$4,000 – the most of any run so far – but the proceeds from the newly renamed Tyrone Wilson and Gary Rutley Memorial Run have contributed to an endowed fund that has grown to support two student bursaries this year.

"This run and the bursaries it supports ensures that students in financial need, who share Tyrone and Captain Rutley's commitment to helping others, will get the help they need. Every dollar raised goes to the bursaries and the interest earned will continue to help students for many years to come," says Shane. ☞



GETTING THAT FIRST JOB OUT OF SCHOOL IS HARD, BUT WHAT ABOUT THE NEXT ONE?

You came to St. Lawrence to start your career. Now you can build on it with a unique suite of tools and networking opportunities available on-line and FREE.

- Design high-impact resumes online at a click of a button.
- Turn your resume into a website and build your online brand
- Join our Linked In Alumni Group and make connections with your fellow alumni
- NEW: Open to offers? Take advantage of a unique partnership with Hyland Human Resources, a Cornwall-based company whose Candidate Search Tool is used by companies across the country to find the right candidate for their open positions.

Find out more at
www.stlawrencecollege.ca/alumni

THE DEMAND FOR SUPPLY



New Supply Chain & Logistics program to meet a growing industry need by Denise Wing

St. Lawrence College will offer a much anticipated Supply Chain & Logistics Techniques program in January 2013. Delivered on St. Lawrence College's Cornwall campus, the 18-week program is comprised of 15 weeks of in-class instruction, followed by three weeks of field placement at some state-of-the-art distribution centres within Eastern Ontario.

The program will be delivered by the College's Corporate Learning and Performance Improvement (CLPI) Division and was developed in response to a growing need for workers to support an expanding Supply Chain sector in Eastern Ontario.

Cornwall has recently developed into a "Centre of Excellence" for the distribution of goods and materials across Canada with several companies establishing regional distribution centres in the city, including Walmart Canada, Shoppers Drug Mart, Target, the Benson Organization, Richelieu Hosiery, Canlyte, and American Standard.

"This sector is the fastest growing sector in the region's economy and continues to have significant positive impacts on the regional transportation and warehousing sectors, creating hundreds of

new jobs," says Mark Boileau, Manager of Cornwall Economic Development.

It should be noted that other Eastern Ontario communities have also seen investment in the supply chain sector, with Sears Canada, Tim Horton's and Giant Tiger also having major distribution centres in the region.

The Supply Chain and Logistics Techniques program was created in response to the need of employers in the Supply Chain Sector, working in warehousing and distribution, transportation or the manufacturing/retail areas.

"We recognize the importance of the supply chain and logistics sector in Eastern Ontario. As we continue to develop and align training and education with workforce demand, we will maintain our commitment to providing 'ready now' people: that's people with exactly the right skills that an employer is looking for at the right time," says Charlie Mignault, Director of Business Development, Corporate Learning and Performance Improvement at St. Lawrence College. "As we expand this mandate in our communities we will act as an engine for regional economic development and provide organizations with the people that will help their companies grow and prosper in the future."

The Supply Chain and Logistics Techniques program looks to see students graduate with a skill-set that will make them attractive assets to companies within the sector. The focus of the course will be to have students learn best practices and techniques that will allow them to succeed in one of the key driving forces of the Canadian economy. "The field of supply chain management is one of the fastest growing sectors in the Cornwall community with a diverse range of excellent job opportunities for trained individuals," says Richard Schneider, General Manager at Supply Chain Management Inc. "We are pleased the College is offering this program and look forward to working with graduates in the future."

Supply Chain Management operates a 1.3 million sq.ft. distribution centre for Walmart Canada and is Cornwall's largest private sector employer. In a similar fashion, the Shoppers Drug Mart distribution centre in Cornwall is operated by Matrix Logistics and Target's newly constructed 1.4 million sq.ft. distribution centre will be operated by Eleven Points Logistics.

The Supply Chain sector is a term used to incorporate companies and economic activities relating to the movement of goods between manufacturers and consumers. As such, it incorporates companies involved in transportation (trucking companies), warehouse (distribution centres) and procurement. The sector employs people with a diverse range of skill sets.

"The supply chain is one of the most essential sectors of the Canadian economy, involving about 767,000 workers from a range of occupations and industries," says Kevin Maynard, Executive Director of the Supply Chain Sector Council "This program from St. Lawrence College will help the sector meet its human resources and labour-market challenges."

Second Career applicants may be able to receive funding for the Supply Chain and Logistics Techniques program. Second Career is an Ontario Government program that enables laid-off Ontarians to train for a new job in high demand careers. ❧

Report on Giving 2011-2012



Message from The Chair

St. Lawrence College Foundation Annual Report on Giving 2011–2012

The 2011 – 2012 fiscal year was a very successful one for the St. Lawrence College Foundation. We continue to focus our efforts on four distinct areas of activity: advocacy for St. Lawrence College and our students, fundraising, stewardship of donor gifts held in trust, and strategic granting expenditures.

Our fundraising initiatives secured nearly \$2 million in resources for the Foundation this year. While donors directed their gifts to a wide range of interests, endowed bursaries continue to be popular choices for our donors' philanthropic investments. The Difference We Make Campaign, a \$4.5 million appeal to support the revitalization of the Cornwall campus, has now surpassed the \$3 million mark. We have been the beneficiary of some truly generous donations. I am particularly encouraged and grateful for the participation and contributions of the college's own staff and students.

More than 450 students received donor-sponsored financial awards this year. With our endowed bursary funds now valued at more than \$7 million, we are well-positioned to sustain and grow our offerings of financial aid for students. The Foundation has again been able to support several "Extraordinary Learning Opportunities" for students. Fifteen Child & Youth Workers headed to Kenya for the rare and rewarding opportunity to work on a remote community project, while Students in Free Enterprise (SIFE) members applied their efforts to making transformational change for the Partners in Mission Food Bank, among their many other initiatives. Cornwall Business students traveled to Montreal to represent St. Lawrence in a business case competition, while in Kingston, Business Accounting students hosted a provincial accounting competition, finishing second among all 24 Ontario colleges. In total, more than 30 distinct projects were undertaken with some level of financial support provided by the St. Lawrence College Foundation. It is through the generosity of our many supporters and advocates, and through the tireless efforts of the small but committed team in our Alumni and Development Office, that we are able to help our students become engaged in, and learn from, these remarkable learning opportunities.

On behalf of the St. Lawrence College Foundation Board of Directors, I thank each and every one of our donors for making our college a priority among their philanthropic choices this year.

Julie Tompkins, Chair
Business – Advertising & Public Relations
Class of '84

Financial Report

St. Lawrence College Foundation

Secured Funds in 2011 – 2012

Capital Projects	\$	510,455
Expanding Opportunities Campaign – Brockville		57,500
Brockville MVS Gallery		25,200
Event Sponsorships		10,000
OTSS New in-year gifts		513,000
OTSS Matching Funds		375,300
Annual Gifts & Directed donations		149,500
Annual Award Sponsorships		146,500
General interest income		6,500
Endowment interest income		192,000
Total Resources Secured	\$	1,986,000

Expenditures and Transfers in 2011 – 2012

Endowed Bursary Fund	\$	888,300
Student Awards		372,800
Capital Projects		446,600
Special Projects		98,800
Total Foundation Investments	\$	1,806,500



Building Better: Creating a Learning Environment

We often say that learning can happen outside of the classroom, but for many of our programs, the classrooms themselves are essential to the process. Whether it's the specialized Simulation Labs on each campus for use by our future nursing and health professionals, or the state-of-the-art technology that prepares students for the workforce, investments in capital improvements on all campuses have a direct impact on learning.

The recent revitalization of our Cornwall Campus is a case in point. By taking an older, but impressively well-built shell that is Moulinette Hall, and stripping it down to provide the latest in wired classrooms, well-equipped labs and student-friendly common areas, the 'new and improved' Cornwall Campus has provided a welcoming environment to an ever-growing number of students, while providing learning opportunities that are second to none.

We can thank the Cornwall community for much of the improvements, just as our Brockville and Kingston communities supported those campuses through their revitalizations over the last several years. The investments in our physical space, along with instructional capital, are essential to ensuring that we provide our students with the education that best prepares them for meeting their goals.

In Aid of Students

Our students are learning that their education is an investment. It's an investment in their futures, and an investment in our community. They've invested their time and energy, savings and part-time earnings, and most have incurred debt to get here.

Over the course of our three Donor Nights on each campus last November, we celebrated the power of our communities' generosity in providing almost \$350,000 in

donor-supported student financial assistance. By far, the majority of donors to St. Lawrence College choose to create either bursaries or scholarships that provide direct financial assistance to our students, and we thank you.

This year, we received almost 4,000 applications for bursaries and scholarships. With the diligence of our Selection Committees on each campus, we had the unenviable task of selecting just a handful of recipients from the

many more who could have used our help.

The St. Lawrence College Foundation remains committed to growing our pool of donor-supported financial assistance to students. We will continue to seek supporters just like you: people who recognize that support of post-secondary education can and does change lives.



LEARNING OUTSIDE THE CLASSROOM

Whether it's sending nursing students to Nepal, or Energy Systems Engineering Technology students to the country's largest green building expo, the St. Lawrence College Foundation recognizes that learning often happens outside of the classroom.

The Extraordinary Learning Opportunities Fund and the Engaging Alumni Fund, together with donor-specified funds, has made a significant difference in the educational environment for our students. In many cases, it is used to fund student-driven initiatives that are organized and planned by students for students. In other cases, it enables opportunities for students to begin the networking process in their fields of study, by attending industry conferences and showcases. Or it can also include bringing Alumni back to the place where it all started for them – and work with and mentor our students in specific projects

where they can share their knowledge.

Listed below are just a few of the projects funded by our generous supporters:


- Building Behavioural Solutions – a conference that brings together community professionals with Behavioural Psychology and Behavioural Science students for a day of learning from thought-leaders in the field.

- Cornwall Nursing Students in Nepal and Kingston Child and Youth Workers to Kenya: International learning opportunities that provide cross-cultural learning, while challenging students to address their own assumptions.

- Youth and the Law – our first ever tri-campus Police Foundations conference that

brought together students across all three campuses to hear from SLC Alumni who work in the youth justice field – in areas as diverse as group homes, community service, addictions and mental health.

- Artist in Residence on Brockville Campus – bringing an SLC Fine Arts alumnus back to campus to work together with students on a new artwork, utilizing new techniques and unconventional media as part of an exhibit at the Marianne Van Silfhout Gallery.

- The Gen Y Guy – Internationally recognized speaker Jason Dorsey came to Kingston campus to offer his insight into navigating the multi-generational workplace for students, alumni and the community at large. 



Donors

as of fiscal year end March 31, 2012

Alex Abugov	Bernard (Bud) Burkom	Marco DiPietrantonio	Glashan	Julie H. Johnston
Bruce Abugov	Margaret Burns	Gerry Dobbyn	Maria P. Glenn	Bob & Joy Jones
Carol Lynne Abugov	Amanda L. Burns	Jessica Dobson	Diane Godard	Sherri Karimi
Doreen Abugov	Mona Burrows	Graeme & Mary Jane Doig	Peggy Graham	Steve Katwaroo
Sylvia Abugov-Springer	Tom Butkovich	Lynda Dowdle	Beverly Grant	Barry Keefe
Paige Agnew	Arleen Cain-Roy	Michael Drew	Stephen Graves	Estelle Kelly
Elaine Ainslie	Roberta Cairnie	Patricia & Alan Duffield	Kathy Gray	Patricia Kerth
Muriel Allen	Judith Caldwell	Angela M. Dukelow	Patricia Gray	Sheila Keuhl
David G. Allsopp	Isabel M. Cameron	Richard & Sarah-Jane	Joyce Green	Carla Kingston
Brad Amell	Benjamin D. Campbell	Dumbrille	Donald & Shirley Green	William T. Kirby
Timothy & Lynne Asselin	George & Marilyn Caners	Richard & Fay Eamon	Georgina Grey	Nancy Ladouceur
Richard N. Aubry	Shaotang Cao	Dayna L. Earl	Robert Grey	Diane M. Lalonde
Darleen Baker	Eugene Cardinal	Shirley Edwards	Margaret Hall	Anne Landon
Hugh & Gloria Bates	Dan & Bonnie Cashman	West C. Edwards	Norman Hall	Joshua Laurin
David Beach	Leslie E. Casson	Thomas Elia	John Hamilton	Robert & Sandra Lawn
Cierra Beattie	Susan Chamberlain	David & Sandy Enns	LouAnne Hamilton	Kathleen Lawton
David & Anne Beatty	Louise Chatterton Luchuk	Sheryl Ewart	Ruth Hamlin & John	Madeleine Lemieux
Donna Beatty	Tara R. Chenier	Don Fairweather	McIlravey	Patricia LePoidevin
Jason D. Beaubiah	Melanie Christian	Gordon Fairweather	Suzan Hanna	Edward Levine
Tanya E. Beeler	Lorraine Christo	Dawn Ann Faris	Shirley & Richard Harris	Richard Lewis
Nella N. Belcastro	Raul & Esther Cirne	Ann Faurschou	Catherine Harris	Laurie Linehan
Elsie Belisle	Franca Ciulla &	Margje Feddema	Mary E. Hart	Frank Lockington
Beryl Bennett	Nick Dardano	Linda L. Feig	Constance R. Hart	& Patricia MacInnis
Lorraine Berezny	Steven Clark	Donna L. Ferguson	Jeff & Angela Hayward	Heather J. Lodge
Renee Berquist	Carol Clark	Carole Ferris	Robert &	Lindsay Longley
Robert Bird	Nancy A. Cleary	Bernard J. Finn	Micheline Hemmings	H. Bruce &
Kimberley Bird	Linda Clifford	Lawrence Finsten	Jane D. Hess	Susan Lounsbury
Karen Bissonnette	Linda Cloutier	Patrick Finucan	Robin Hicks	Karrie Loynachan
Vera G. Black	Lynn Clow	Susan & Richard F. Fisher	Joel & Sonya Hirsch	Jordan Lyman
Cindy L. Bleakney	Tracy Coady	Jennifer & Steve Fisher	Margaret M. Hogan	Cheryl & Brian Lynch
Marina Boss	Eleanor M. Condra	Kathleen J. Fisher	Douglas G. Hogeboom	Joy Lynch
Patricia & Jean Bougie	John Conrad	Craig Follett	Lindsay Hood	Mary Ann Lyons
Marceline Bougie	Kathryn A. Conway	Patricia M. Forward	Clifton & Lillian	Gordon &
Lorraine S. Bougie	Douglas & Joy Cook	Dorothy Foster	Howard	Shirley MacDonald
Sean M. Boulerville	Tracey D. Corrigan	Janine Foster	Linda E. Howes	Colleen MacDonald
Reginald Bovey	Bernice Cotie	Ivanka Franjkovic	Susanna Hum & Neil	Cameron J. F. MacDougall
Pam Bovey Armstrong	Christopher Coyea	Jean Freemantle	Payne	Gordon & Betsy
Nicole Bowman	Catherine J. Crain	Joan & Andre Frommer	Sharon Hunt	MacDougall
Erin Braidford	Susan Cross	Kevin Gahan	James Hurd	Gordon & Betsy
John Broome	JoAnn Da Silva	Myrna Garrison	Mike Jablonicky	MacDougall
Sheila Broome	Donna Davidson	Peter & Lise Gault	Michael & Janet Jackson	Sharon MacFarlane
Brian & Olga Brougham	Christine A. Davis	Linda Gauthier	Allyson James	Michael C. MacKinder
Terry Brouillet	Frances Dawson	Mary Louise Geen	Wade &	Elizabeth M. Macrae
James Brown & Joan Lee	Christina Decarie	Lucie H. Gerritzen-Stevens	Beverley Johnson	Florence & Frank Manning
Neil Burke	Pamela Dewar	Stewart & Connie	Cheryl &	Colman & Mary Mansworth
			Michael Johnston	William K. Markell
				Bonnie Markell

Dan & Pat Markovich
 Albert Martin
 Brenda Mason
 Rudy Massimo
 Charlene P. Mastin
 Margaret N. D. Matheson
 Gregory Matthews
 Aline M. Mayer
 Sanford (Sandy) McCallum
 Elaine & John McClintock
 Terri-Lynn McDade
 Terry & Sheila McDermid
 Jim McDonald &
 Michelle Arsenault
 Don & Rosemary McGowan
 Sandra H. McKay Dixon
 Ann-Marie McKenzie
 Brenda McLaughlin
 Patience A. McLeod
 Ralph & Lorraine
 McNaughton
 Kaityln C. Merrill
 Joan Miller
 Peter Milliken
 Wendy E. Mitchell
 Lacey M. Monk
 Edmund & Fern Moore
 Steve Mortensen
 Thelma M. Mott
 Charles J. Muli
 Jim Mulvena
 Jan & Craig Munro
 Gary & Charmaine Murray
 Shandi Nadeau
 Martin Nadon
 Murray Newell
 Cynthia Newt
 Father Roy H. Nixon
 Brigitta M. Nixon
 Pat O'Brien
 James O'Brien
 Barbara & Pat O'Grady
 Donna Orwell
 Sarah Padbury
 Lorraine Palmer-Smith
 Susan & Rob Panter
 Dennis Paproski
 Michelle M. Paquin
 Kenneth & June Pattenden
 Kathy Patterson
 Barbara J. Paul
 Doreen L. Peace
 Robin Penrose

Lynn Perry
 Henry M. Petrynka
 Rosemary A. Petrynka
 Della J. Phillips
 Michel E. Pilon
 John & Catherine Pirrie
 Wendy M. Plant
 John & Kay Plant
 Robin L. G. Porter
 Adam & Sabrina Porter
 Kathleen Portieous
 Helen & Ron Pottinger
 Rosemary I. A. Pouw
 Richard Powers
 Rita M. Purcell
 James Purcell
 Faye D. Ransom
 Marianne Raymond
 Clare Rayner
 Joanne Roberts
 Rosalind Robertson
 Patricia Robson
 Virginia & Jim Roode
 Joseph W. Rotheram
 Doug & Mary Roughton
 Bonnie Ruest
 Vicki Ruthven
 Sandra & Ted Ryan
 Nancy Samson
 Diane Saxton
 Lois Scammell
 Ernest W. Schaefer
 Carol & Paul Schaefer
 Julia Schep
 Barbara Schulman
 Nancy L. Scovil
 Chris D. Scullion
 Christine E. Searles
 Jacqueline S. Seeley
 & Jim Empey
 Daniel Shannon
 Morgan Shaw
 Philip Shnier
 Susan Simmons
 Lisa M. Slack
 Kevin Smee
 Douglas Smith
 Allan & Kay Smith
 Malcolm T. Smith
 George & Jean F. Smith
 Julie Smith-Johnson
 Bob & Judy Snelgrove
 Addy Song

Deborah Soucie
 Jody Souka-Marleau
 Ruth Speer
 Terry Lyn Spence
 Janice Spencer
 Patricia Speyer
 Joan M. Sponagle
 Wilma Spracklin
 Jared St. Pierre
 Nancy Sudak
 Norine Summerby
 Bertha K. Sutherland
 Margaret E. Sye
 Reiko Takagi
 Sue Tamburri
 Robert B. Taylor
 Carolyn E. Taylor
 William Tennant
 Bruce R. Tessier
 Richard & Marilyn
 Thompson
 Gary & Beverly J.
 Thompson
 Julie Tompkins
 Spring L. Tompkins
 Louis & Sheila Tremblay
 Robert J. Tucker
 William Urie
 Julie-Anne Valliant
 Paul Van Nest
 Brenda Vaudry
 Benoit Veilleux
 Pierre Vezeau
 Diane Villeneuve
 Glenn Vollebregt
 Lynn Walker
 Merle Walker
 Terry Wallace
 Janice H. Walsh
 Pei Wang
 Harriet Waterman
 Margaret A. Wheeler
 Chris & Vicki Whitaker
 Stephen F. White
 Kelly Wiley
 James Wilkin
 Shane Williams
 Wanda Williams
 Carol Willis
 Ken Wingert
 William Winston
 Sandy Woodcock
 Donald Young

Jerry P. Zabel
 Mariza Zister

Corporations, Associations & Foundations

1000 Islands Community
 Development Corporation
 14 Theories Inc.
 2202942 Ontario Limited
 3M Canada
 ACE Canada
 Active World Children's Centre
 Adams, Sherwood, Swabey & Follon
 Advocis, Kingston Chapter
 Advocis, St. Lawrence Rideau Chapter
 Afro-Caribe Community
 Foundation of Kingston & District
 Albert & Anne Francis
 Scholarship Foundation
 Allan Graphics Ltd.
 Alzheimer Society,
 Leeds-Grenville
 Arnprior Aerospace Inc.
 Auxiliary To Cornwall
 Community Hospital
 Bayer Inc.
 Bell Canada
 Benson Group Inc.
 BMO Bank of Montreal
 Boardwalk Dental Care
 Boys and Girls Club of Canada
 Boys and Girls Club of
 Kingston & Area
 Boys and Girls Club of Ottawa
 Boys and Girls Clubs of Ontario
 Brockville Community
 Foundation
 Brockville Fire Fighters
 Association
 Brockville General Hospital
 Brockville Mental Health Centre
 Brockville Police Athletic
 Association
 Brockville Recorder & Times Ltd.
 Brockville Women's Network
 Brown's Fine Food Services
 Building Blocks Nursery School
 Caduceon Environmental
 Laboratories
 Canada Life
 Canadian GeoExchange Coalition
 Carefor Health & Community
 Services – Eastern Counties

Casco Inc.
 Cataraqui Region
 Conservation Foundation
 Catholic District School Board
 of Eastern Ontario
 Certified General Accountants
 of Ontario
 Children's Aid Society of
 Northumberland
 CHUM Radio Brockville
 (104.9 JR FM & 103.7 BOB FM)
 CIBC
 City of Brockville
 City of Cornwall
 City of Kingston (Kingston Police)
 Communication Connection
 Community & Primary Health
 Care (CPHC)
 Community Foundation for
 Kingston & Area
 Community Foundation of Ottawa
 Community Living –
 Stormont County
 Congregation of Notre Dame
 Visitation Province Centre
 Cornwall & District Immigrant
 Services Agency
 Cornwall Academy of Medicine
 Cornwall Business Association
 Corus Entertainment Group
 Counselling and Support
 Services of S.D. & G
 Crossroads United Church
 Cunningham Swan
 CUPE Local 109
 Developmental Services of
 Leeds & Grenville
 Dominion Biologicals Limited
 Durham Children's Aid Society
 Economic Developers Council
 of Ontario Inc.
 Electrical Contractors Association
 Emard Bros. Lumber Co. Ltd.
 Empire Life
 Encore Seniors Education Centre
 Enns, MacEachern, Pace,
 Maloney & Associates Inc.
 Eva Toth Dentistry
 Professional Corporation
 Extendicare – Kingston
 Fine Arts Alumni of
 St. Lawrence College
 Free To Become Preschool

Gamma-Dynacare
 Medical Laboratories
 Genivar Consulting Group Ltd.
 Gently Rocking Horse Daycare
 Gibson Holdings (Ontario) Ltd.
 Glengarry Inter-Agency
 Group Incorporated
 Greater Kingston 10 Pin
 Scholarship Fund
 Heather Robertson & Assoc.
 Helen Tufts Nursery School
 Home Hardware
 In A Word Communications
 iStorm New Media
 J.T. Hoekstra Construction
 James Brett Coiffure & Aesthetics
 Johnston Beaudette
 Kingston & District Kennel Club
 Kingston Autism Foundation
 Kingston Construction
 Association
 Kingston Family YMCA
 Kingston Humane Society
 Kingston Military Family
 Resource Centre
 Kingston Refractory Services Ltd.
 Kinsmen Club of Cornwall
 Incorporated
 Kinsmen Club of Smiths Falls
 Kinsmen Club of Trenton
 Knights of Columbus
 Limestone Advisory for Child
 Care Programs
 Master Insulators' Association
 of Ontario Inc.
 McCoy Bus Service & Tours
 Medi-Cal Royal Canin Canada
 Miller Hughes Ford Sales Ltd.
 North Frontenac Community Services
 Northern Cables Inc.
 OACETT
 Old MacDonald Day Care
 Omni Health Care Limited
 Ontario Power Generation
 Ontario Provincial Police Youth Founda-
 tion
 Ontario State Council Knights of Colum-
 bus
 Ontario Veterinary Medical Association
 OPSEU
 OPSEU Local 417 (St.Lawrence Faculty)
 Oxoid Inc.
 ParaMed Home Health Care

Pepsi Bottling Company
 Perras-DiStefano Construction & Design
 Services Inc.
 Perth & Smiths Falls District Hospital
 PK Family Heating & Cooling (1850417
 Ontario Inc.
 Providence Continuing Care Centre
 Quinte Children's Foundation
 ReDriven Power Inc.
 Regent Park Community Health
 Centre Pathways to Education
 S.D. & G. Chartered Accountants Associa-
 tion
 Scotiabank
 Seaway News
 SLC Cornwall Alumni Branch
 SLC Kingston SIFE Students
 Sodexo
 Somagen Diagnostics Inc.
 St. John Ambulance (St. John Council
 for Ontario)
 St. Joseph's School of Nursing Alumni
 St. Lawrence College Retirees Association
 St. Mary's of the Lake Hospital
 Standard Freeholder
 Streetlight Theatre Company
 Student Administrative Council – Brock-
 ville
 Student Association – Kingston
 Student Union – Cornwall
 TD Insurance Meloche Monnex
 Team Cornwall Ambassadors Inc
 The Justin Eves Foundation
 ThermoFisher Scientific
 Tierney, Simpson & Prytula
 Tim Horton's (408228 Ontario Ltd.)
 Tim Horton's Advertising & Promotion
 Fund (Canada) Inc.
 Tom and Gail Kaneb
 Family Foundation
 Township of South Dundas
 TransAlta Corporation
 Tuckwell Marketing Limited
 Two/Ten Foundation of Canada
 United Counties of Stormont,
 Dundas & Glengarry
 Universal Supply Group (NAPA Auto
 Parts)
 W.G. McLaughlin Counselling & Psycho-
 therapy
 Xerox Canada Inc.
 Youth Now Intervention Services Inc. 🇨🇦

Giving Thanks: Donor Night 2012

Over three weeks on all three campuses, the St. Lawrence College Foundation gathered together our College's supporters with just a few of the students they've helped out, for an evening of dining and gratitude. The events are the Foundation's opportunity to recognize the College's donors over the last year, and include performances by the students of the Music Theatre Performance program. As an added twist, this was the first year the Brockville and Cornwall events were held on campus – in a tent in the gymnasium-, to stunning effect.



There are countless words to describe what a St. Lawrence College education can do for the students who receive it ...

Transform
Excite
Motivate

Connect
Empower
Inform
Direct
Engage
Inspire
Educate
Create

There is just one word for the alumni, parents and friends who will make gifts this year to support them:

Essential!



Your support helps St. Lawrence College ensure that higher education remains accessible to each and every student and that SLC continues to offer an education that is uniquely challenging and rewarding.

The gift of education pays dividends long after graduation for our students and our community.

Make your gift today at www.givetoslc.com

Retirees @ SLC

Plugged in or Tuned Out?

Were the 'good old days' of teaching just a memory, or has the computer replaced the professor?

by Dick Tindal

There are widely varying views about teaching and learning and how they should take place. The purpose of this column is to illustrate some of these perspectives and to invite your commentary.

The New Holy Grail of Education

Given the revolution in communications technology it was inevitable that new methods of delivering education and training would come to the fore. A computer (or other learning device) has increasingly been touted as the indispensable learning tool. In at least some of the programs at St. Lawrence College, the use of Facebook and Twitter to share ideas about courses has led to an increased level of student engagement (see www.imcslc.ca). Over the past few months there have been a number of articles in the media about the increase in online courses and the movement to open learning platforms that allow students from around the world to share in educational experiences. New technologies, including the increase in e-books, offer the possibility of decreased student costs and more flexible and interesting educational formats. Since students learn at varying rates, and must often juggle part-time job commitments, Internet courses allow them to proceed according to their needs.

Some, however, claim that increased reliance on computers and efforts to make education more fun, have "dumbed down" the educational experience. One professor claims that most students use their electronic devices in the classroom to view their Facebook pages or visit celebrity web sites. (Doug Mann, "Let's unplug the digital classroom," *Toronto Star*, October 7, 2012). While online courses do allow students to work at their own pace, is it not naïve to

assume that – left to their own devices – all students would make the commitment to complete the necessary course work? Is it not the case that a good number of students require the structure of a regular class and the stimulation and encouragement of a concerned teacher and supportive classmates?

The Good Old Days

As one of the pioneers of the community college system (1969 to 1998), I retain a nostalgic image of small classrooms where instructors with real world experience provided practical knowledge for students whose names they knew within the first few weeks of the semester. This was, for me, one of the great strengths of the community college system.

Yet I know that not all of those practical instructors had an aptitude for imparting their knowledge in an interesting way. Moreover, much as I fondly recall the good old days, I confess to having taught an Internet course within a couple years of my retirement from St. Lawrence. I expected (as did most of the students back then) that an Internet course experience would be cold and impersonal. It was just the opposite. Complete strangers from coast to coast enthusiastically joined in online discussions and, more importantly, often provided caring support if students mentioned a work or family challenge that was hampering their contribution.

Combining Old and New

This is obviously a complex issue, but a good starting point is a recognition that we don't have to deal with an either-or choice. It is entirely possible (and, I would argue, desirable) to combine elements of old approaches and new technologies. In other words, it is not a case of in class instruction versus the Inter-

net. Why not deliver a course through both avenues? The core elements of the course – those matters that would normally be covered in lectures – could be "presented" by the instructor once, in the form of an online series available to those in the course on a cumulative basis over the life of the course. In addition, instructor and students could also meet weekly for discussions related to the core topics, essentially a variation of the tutorials that have been used in universities for eons. I suspect this combined approach is already in use; I cite it only to illustrate that old and new approaches can be effectively combined.

What Do You Think?

After this admittedly very brief introduction to a complex subject, what are your recollections and your reactions? I'd very much like to hear your views.

- Are you fully on board for the brave new world of online learning or do you share the concern of some that over-reliance on technology is actually harmful?
- Was your St. Lawrence College experience one of small classes, interesting instructors, and engaged students (my nostalgic image) or did you often wish you could have been alone with a computer screen rather than sitting in the classrooms of St. Lawrence during your student days?

I hope in a future article to share some of the comments that I receive (without attribution unless you wish to be cited), so please send your thoughts to Dick Tindal at tcl.kingston@gmail.com. 📧

Update



WIN

You came to St. Lawrence to start your career . . . now tell us about it!

Update your Alumni record at:

www.slcalumni.com/update

with your current employment information and we'll enter your name in a draw to win SLC Alumni Swag. THREE lucky alumni will be able to choose from a Computer Bag, Hoodie, Golf Shirt and more!

All updates made online – with employment information (even if it's just that you've retired!) –during the month of January will be eligible.

ENTER TODAY 

ALUMNI NEWS

A river runs through it SLC Prof/Grad has first novel published

Business Administration - Marketing grad Jennifer DeBruin (Kingston, 1996) has one foot firmly planted in the present, and another in the past.

With her job as a Communications prof on Cornwall Campus, she teaches students in various programs and of various age groups, but she has also embarked on a new adventure she hopes will help preserve the past while inspiring her students.

This past summer marked the publication of her first novel, *A Walk With Mary*, by General Store Publishing. Fittingly launched at the Lost Villages Museum in Long Sault, the book is inspired by a true story. Voyageur caught up with Jennifer to find out more.

What do you teach at Cornwall campus?

I teach Communications (COMM34 and Second Level ie: COMM39) in a variety of programs.

How did you find time to write a novel?

Are you one of those uber-organized writers who sets apart a specific time to write, or were you burning the midnight oil?


I had no organization for writing. When I was inspired, I wrote. *A Walk with Mary* was written about 10 years ago (taking about 1.5 yrs to write) with no real intent to have it published. My second book, which I am currently writing, is much more challenging as it is difficult to find time to commit with a busy schedule - but I have written about half of the story.

You're a grad and now a professor, has either of those roles played a part in creating/inspiring the story you tell?

I believe my college career (student and Prof) has further strengthened my commitment to sharing the stories we have to tell in Eastern Ontario. There is such a rich history here, and with the river at our doorstep, inspiration is not hard to find. The story, inspired by my family connection to the river, and the Lost Villages, is certainly a story I feel deeply.

Where can someone purchase your book this winter?

The book is available in book and e-book formats and there are many large (General Store Publishing House (publisher), Chapter/Indigo, Amazon.com) and independent retailers carrying the books with more expected

in 2013. The best bet is to visit my website: www.jenniferdebruin.com for a list of retailers. 

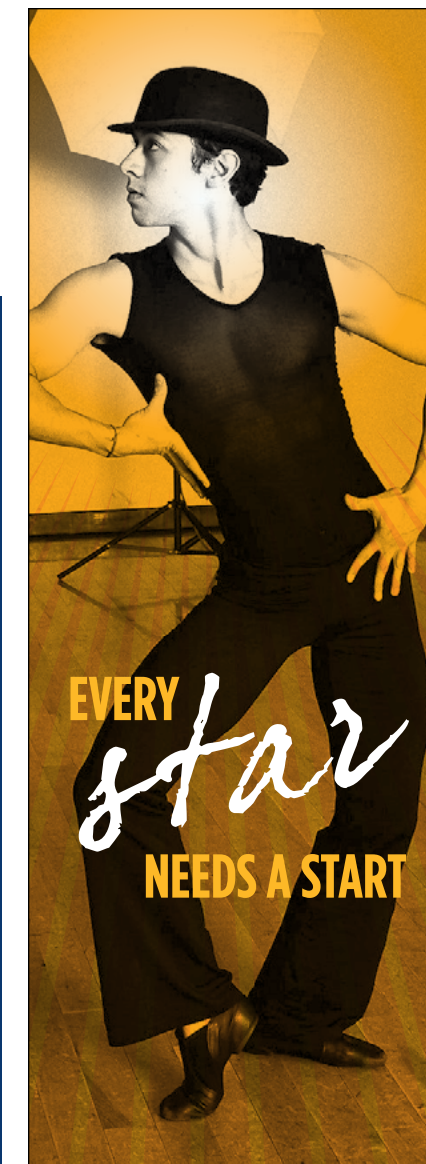
A Walk With Mary Synopsis:

William Phillips, a young blacksmith, sets out to find a place he can call home with his beloved young wife, Adelaide. What he finds is the idyllic village of Moulinette, situated on the banks of the mighty St. Lawrence River and now known to history as a "Lost Village."

Their daughter Mary, raised in a generation known for its stoic resolve, is witness to some of the greatest events in modern history: the advent of the automobile, the tuberculosis pandemic, war, the Great Depression, and the St. Lawrence Seaway. For Mary, all came with a price.

Near the end of her journey, Mary, no longer bound by the expected decorum of playing the role of daughter, wife, or mother to a growing family, is able to allow her vibrant, long repressed spirit to reemerge. Yet, just as the waters washed away Mary's beloved village, so now Alzheimer's is washing away her memories.

Before it is too late, Mary's grand-daughter, Eliza, realizes that if anyone is to ever truly know who she is, her story needs to be told. What she finds lurking under the surface of her reserved grandmother are the hopes, dreams, losses, and disappointments of a lifetime.



Become a friend today and help make dreams come true. *Friends of Music Theatre* are privy to special benefits.

Join today, go to www.givetoslc.com/musictheatre to make your gift and find out more.


St. Lawrence
College
FOUNDATION

Season Sponsor



St. Lawrence College Stage Season 2012-2013

New Faces
March 8, 2013
@8pm

42nd Street
April 18 & 19, 2013
@8pm

April 20, 2013
@2pm & 8pm

For tickets, please contact
The Brockville Arts Centre
613-342-7122
www.brockvilleartscentre.com



Media Sponsors



Above: The annual Alumni Art Show opened at the Brockville campus gallery on November 23, attracting a packed house of alumni and guests. The show featured the work of 22 alumni artists. The annual event is open to any graduate of St. Lawrence College. You don't have to be a Fine Arts grad to enter your work

Below: Keith Hare with his photograph of Brockville City Hall



Alumni Echoes

1990

Beata Faraklas

Orientation to Employment – K
I am a grandma now!!! of the beautiful girl Juliana. Professionally, I am the owner of All Hair Alternatives Studio and Bea's Mastectomy Boutique. 1334 Princess Street Kingston email: bea@aha-studio.com

1992

Sharon Fleming

Visual and Creative Arts - Fine Arts - K
Sharon is a member of the Institute of Professional Bookkeepers of Canada and is moving her business to Port Hope. She can be contacted at kisbookkeeping@cogeco.ca

Kimberley Filion

Home Support - B
As a mature student, I found my classmates to be very instrumental in my success and the Brockville teachers were great!

Alumni Echoes cont.

2003

Tania Carfa

Business Administration – Marketing – K
I believe the skills I learned and the friendships I formed while at St. Lawrence College (2000-2003), have helped shape my career. The business skills I acquired are top notch. I firmly believe that the Business Administration program provides a solid foundation upon which to build a successful career!

2006

Alayna Lemaire

Early Childhood Education – K
I currently have two children and I run a daycare through my home

2007

Tammy Ridge

General Arts and Science – C
I had a wonderful experience at St. Lawrence College Cornwall. You are not just a number, you are a person. The professors are fantastic. The education I obtained from SLC, prepared me for the position I have today at Winchester District Memorial Hospital. I am truly grateful to SLC. The friendships I made at SLC I will cherish for the rest of my life. Thanks again St. Lawrence College

2009

Jeffrey Lallean

Social Service Worker – K
BSW Ryerson University Toronto. Looking forward to attending MSW at Wilfred Laurier University September 2013

Kristin Running-Parker

Child and Youth Worker – B
I would like to announce that I found the love of my life, Tony Parker from Nashville, TN and we were married on Sept 24th 2011. We're living in Mallorytown, Ontario for now until I have sponsored him to become a Permanent Resident of Canada.

2010

Elizabeth Courval

Social Service Worker – K
I loved attending SLC. The staff is very knowledgeable, students are friendly, campus is clean and fun, food in the cafeteria is edible, and there are lots of extracurricular activities! I also loved doing a college placement, never thought I could learn so much before being hired! Now, as an alumna, I'm still trying to stay involved with SLC in any way I can be of assistance!



CORPORATE LEARNING & PERFORMANCE IMPROVEMENT

Is your organization spending too much on absenteeism, short-term disability and modified work assignments?

Whether you are in charge of wellness or impacted by it in your own workplace, our new **Wellness in the Workplace** programs can assist.

By investing in employees an organization can increase innovation, performance, and engagement.

Corporate Learning and Performance Improvement at St. Lawrence College.

Contact us for more information:

613-544-5400 ext. 1348
corporatelearning@sl.on.ca
www.slccorporatelearning.ca



Strategic learning for real results.

2011

Jessanne Bugg
 Veterinary Assistant – K
 I had the best time here! SLC was my second time in college, and it was fantastic. The teachers and educational assistants were helpful and friendly, most of all they were approachable and just generally awesome to be around. I couldn't have picked a better college to attend :)

nerve-racking, but the staff and professors at St. Lawrence College were amazing and made me feel comfortable and welcome. My professors were outstanding and incredibly warm and inviting. I can honestly say that the three years I spent at St. Lawrence were by far three of the most enjoyable years of my life, and I plan to stay involved in whatever way possible with the college because of that."

2012

Caitlin Norwich-Stevenson
 Behavioural Science Technology - K
 "I came to St. Lawrence a bit later in life than my classmates, having taken a number of years between high school and college. Coming into St. Lawrence after so many years out of the academic work was initially

Stacey Barr
 Office Administration – Legal – K
 SLC is a phenomenal school. I had a lot of fun throughout my time at the college. Program I attended was amazing, easy and fun. Made lots of friends and loved college life. Not too much work, and a get 'er done attitude! 🍷

Passings

Odette Menard-Osser, Faculty
 On Monday, August 27, 2012
 Beloved wife of the late Dr. Harry Osser. Loving mother of Bob and Mary Osser of Sarnia, Claire and Joe Wensing of Kingston and Francesca and Steve Muller of Kingston. Grandmother of Brett and Sean Muller, Megan and John Wensing and Jia Osser. Odette graduated from the University of Montreal Nursing Program and later was a Professor of Nursing at St. Lawrence College until her retirement. She was an active volunteer in the Kingston Community at Martha's Table and the Kingston Symphony.

Peter Lem, Student Success Facilitator
 After a long and courageous battle with cancer, Peter passed away August 31st, 2012. He will be sadly missed by his beloved wife and best friend Sonya (Bowles) and his faithful dog, Lucky. A celebration of Peter's life

Passings cont.

was held in Kingston on Sunday, September 9, 2012 at St. Lawrence College. Peter spent the final eight months of his life writing his memoirs. Copies of his book may be purchased through <http://upstartpress.blogspot.ca/2012/09/tai-shan-and-big-dipper-by-peterlem.html>. All profits will go toward The Peter Lem Memorial Fund, which will support St. Lawrence students who are directly affected by cancer. Donations to the fund can also be made at www.givetosl.ca/PeterLem

Gerald "Gerry" McCready, Faculty
 Peacefully, at the Kingston General Hospital on Sunday, September 9th, 2012 with his family by his side. Beloved husband of 49 years of Charlotte. Loving father of Cary-lee Carter (Kurt) of Kingston, and Remmick McCready of Stockholm, Sweden. (See box)

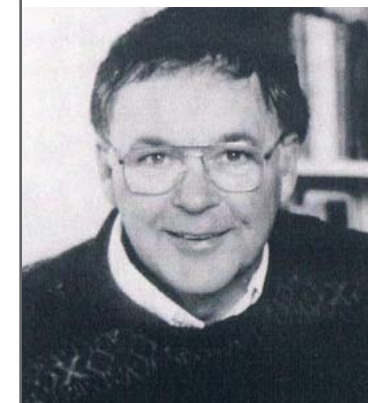
Eileen VanDusen, Fine Arts, 1972
 Eileen Gladys VanDusen passed away peacefully at the Brockville General Hospital, Garden Street Site, in the very early hours of Saturday, September 29, 2012. An only child, born on August 24, 1923 in St. Albans, Hertfordshire, England, she came to Canada with her parents in 1927 and eventually settled in the Mallorytown area – where she remained and raised her own children in her childhood home. Eileen was always fascinated by nature, by birds and animals and all their habits. She was a homemaker, a gardener, a cook, a baker, she could quilt and sew, sing and paint. She liked to read and to learn. She received her Fine Arts Diploma from St. Lawrence College in 1995 at the age of 72.

Nicholas Baker, Welding, 2009
 Accidentally on Hwy 2, Long Sault on October 18, 2012. Beloved chosen son of Daniel and Suzanne Baker. Dear brother of Cody, Sarah, Emily, Paul and Hope. He was a young man who enjoyed life and greatly valued family. He was always eager to help others. Nicholas graduated St. Lawrence College with a welding certificate and enjoyed working at Longevity in Summerstown. 🍷

Passings are gathered from area newspapers and the submissions of friends and family.

In Memory of Gerry McCready

(posted on the St. Lawrence College Retirees website)



St. Lawrence College lost one of its most colourful and multi-talented individuals with Gerry's death on September 9, 2012. He joined the college in August 1970 and was a member of the "bullpen" of new Kingston campus staff that included Ian Wilson, Larry McCurdy, Brian Hoobin, Emel Erkan, David Pattenden, Phil Englishman, Graham Orpwood, Pat Finucan, Nathalie Sorensen, and Rob MacIntosh.

Gerry was a Professor in the Business Department from 1970 to 1980 and from 1986 to 1994. He left the college to continue his battle with MS, which he

fought courageously for more than 30 years.

Gerry excelled in many things. He had a career in business before coming to St. Lawrence and he also held a very senior position in Sports Canada during his interrupted career at the college. He was the author of several marketing texts and developed the initial Human Resources Management Program on Kingston Campus. In addition, he was very accomplished in a variety of sports including football, baseball, hockey, tennis and squash. He initiated the Canadian Touch Football Association and managed it for several years.

At St. Lawrence, no one personified better the lively spirit of the Business Department in those early decades. He was full of ideas and enthusiasm and always ready for a good laugh. He loved to play practical jokes and fellow teachers were often left baffled and then amused by some strange letter or phone message. Long after he left, staff would react to a similar communiqué by looking around with wonder and asking "Could that be McCready again?"

Gerry's wonderful spirit and strength of character were never more evident than in his response to the increasing challenges of MS – backed by formidable support from his wife Charlotte. He became the Education Director for the Kingston Branch of the Multiple Sclerosis Society of Canada and Editor of the MS Pathfinder Newsletter. He maintained contacts throughout the world, via the Internet, and stayed on top of research into MS. He also used the Internet to send frequent jokes to his wide circle of friends, thus continuing the tradition of making people laugh that so epitomized Gerry McCready.

Those of us privileged to visit with him at his home regularly, found the same old Gerry, ready to reminisce about St. Lawrence and relive jokes and adventures from the old days. He was always interested in his former colleagues and how they were doing. He was a man who enriched the lives of all those who knew him. Many of those friends joined with family on September 14 for a celebration of life. Laughter was more prevalent than tears as SLC retirees Brad Hill, Bill Crowe, Mike Cullimore, Ron Robinson, and Dick Tindal (among other guests) remembered Gerry and told stories about his jokes and pranks and wonderfully upbeat personality. Had anyone had the foresight to videotape Brad's eulogy during the funeral service – in which he imagined Gerry's conversation with God and his various suggestions to God for improving Heaven – it would surely have gone viral on YouTube by now!



St. Lawrence College

Employment Service



Your job is out there.
We will help you find it.

St. Lawrence College Employment Service Community Employment Resource Centre offers a variety of resources and services for job seekers, and working with us is simple and free.

- Individualized employment consultation
- Information on the local labour market
- Career planning and job search strategies
- Education and training opportunities
- Apprenticeship information
- Resource centres with access to computers, printers & fax machines
- Employment related workshops
- Referrals to other Employment Ontario programs including: Second Career; Self Employment Benefits; Services for People with Disabilities; Literacy and Basic Skills
- Resumé and cover letter writing
- Job board

www.employmentservice.sl.on.ca

Kingston
 100 Portsmouth Ave.
 Kingston, ON K7L 5A6
 613-545-3949

785 Midpark Dr., Ste. 200
 Kingston, ON K7M 7G3
 613-545-3949

Ottawa
 71 Bank Street, 5th Floor
 Ottawa, ON K1P 5N2
 613-232-0022

Sharbot Lake
 1099 Garrett Street
 Sharbot Lake, ON K0H 2P0
 613-545-3949

Itinerant service available at:
 2779 Rutledge Road
 Sydenham, ON K0H 2T0

ALUMNI @ WORK

Kelly Brazeau, Music Theatre 2011 grad, has found a home behind the footlights

As a student in Music Theatre Performance, you were on stage a lot. What interested you about production work?

In my first year at SLC the first show of the season was *The Rocky Horror Show*, I volunteered to help out with makeup and backstage work. Later that year I had my first experience as Assistant Stage Manager for *Footloose* and my eyes were opened to a whole other part of the theatre world. I loved working with the crew from Welcome Wood Productions and thought then that technical theatre may be an interesting path to follow. As it happened I was fortunate enough to solidify that decision the following year when instead of performing in *Little Women* (the second show of the 2009-2010 season), I once again assistant stage managed. It kind of snowballed from there and I actually ended up working backstage on more shows than I did perform while a student in the program. I was very fortunate to have the support of the faculty and my fellow students.

Is there one class you wish you'd paid more attention in now that you've graduated?

I suppose if there was any ONE class, it would have to be our stagecraft (technical theatre) class, or at least I probably should have kept any notes I took. At the time I didn't think it was going to be all that important to my career...boy was I wrong!


Music theatre grads tend to scatter right after graduation. Are you still in touch with your class?

There is a real sense of family in the music theatre program and we're fortunate with social media these days to be able to keep in constant contact with each other. It's great to be able to see so many of my friends working in our chosen field and how everyone is striving to keep the momentum of work going.

What advice do you share with the current students?

If there's one thing I cannot stress enough, it's to keep going. If being an actor is what you love to do, do it! There will be days where it seems impossible to go to that next dance class or memorize your scene. You're too tired, you're too sore. You have to take it one step at a time. All the pain and exhaustion vanishes the second you hit the stage and feel the energy of the crowd.

Where do you see yourself five years from now?

There are very rarely any guarantees in theatre, it's constantly changing and evolving. If five years from now I can still say that working in theatre (whether it's as a stage manager, lighting designer, crew person, whatever!) is my still full time career, I will be more than happy! 

GOOD STUFF CHEAP!



ALUMNI PERKS, JUST FOR YOU

CHEAP Movie Tickets!
Movie tickets from Cineplex Odeon, Famous Players, AMC, Empire Theatres

CHEAP Sports!
Raptors, Blue Jays, Toronto FC

CHEAP Accommodations!
Edmonton, Calgary, Montreal, Niagara Falls, Toronto

CHEAP Live Performances!
Tragically Hip, Coldplay, Wicked, Cirque du Soleil

CHEAP Attractions!
CN Tower, Great Wolf Lodge, West Edmonton Mall, Toronto City Pass

CHEAP Services!
Home, auto and life insurance, car rentals, CAA memberships, Travel discounts

Like us on Facebook, join us on Linked In or visit our website to keep up on the latest alumni benefits.

www.facebook.com/stlawrencecollegealumni • www.linkedin.com • www.stlawrencecollege.ca/alumni

**"My group rates
saved me a lot of money."**

– Miika Klemetti
Satisfied client since 2008



See how good your quote can be.

At TD Insurance Meloche Monnex, we know how important it is to save wherever you can. As a graduate of **St. Lawrence College**, you can enjoy preferred group rates on your home and auto insurance and other exclusive privileges, thanks to our partnership with your institution. You'll also benefit from great coverage and outstanding service. We believe in making insurance easy to understand so you can choose your coverage with confidence.



Get an online quote at
www.melochemonnex.com/slalumni
or call 1-866-352-6187

Monday to Friday, 8 a.m. to 8 p.m.
Saturday, 9 a.m. to 4 p.m.

Insurance program supported by



The TD Insurance Meloche Monnex home and auto insurance program is underwritten by SECURITY NATIONAL INSURANCE COMPANY. The program is distributed by Meloche Monnex Insurance and Financial Services Inc. in Quebec and by Meloche Monnex Financial Services Inc. in the rest of Canada.

Due to provincial legislation, our auto insurance program is not offered in British Columbia, Manitoba or Saskatchewan.

*No purchase required. Contest organized jointly with Primm Insurance Company and open to members, employees and other eligible persons belonging to employer, professional and alumni groups which have an agreement with and are entitled to group rates from the organizers. Contest ends on January 31, 2013. 1 prize to be won. The winner may choose the prize between a Lexus RX 450h with all basic standard features including freight and pre-delivery inspection for a total value of \$60,000 or \$60,000 in Canadian funds. The winner will be responsible to pay for the sale taxes applicable to the vehicle. Skill-testing question required. Odds of winning depend on number of entries received. Complete contest rules available at www.melochemonnex.com/contest.

©The TD logo and other trade-marks are the property of The Toronto-Dominion Bank or a wholly-owned subsidiary, in Canada and/or other countries.